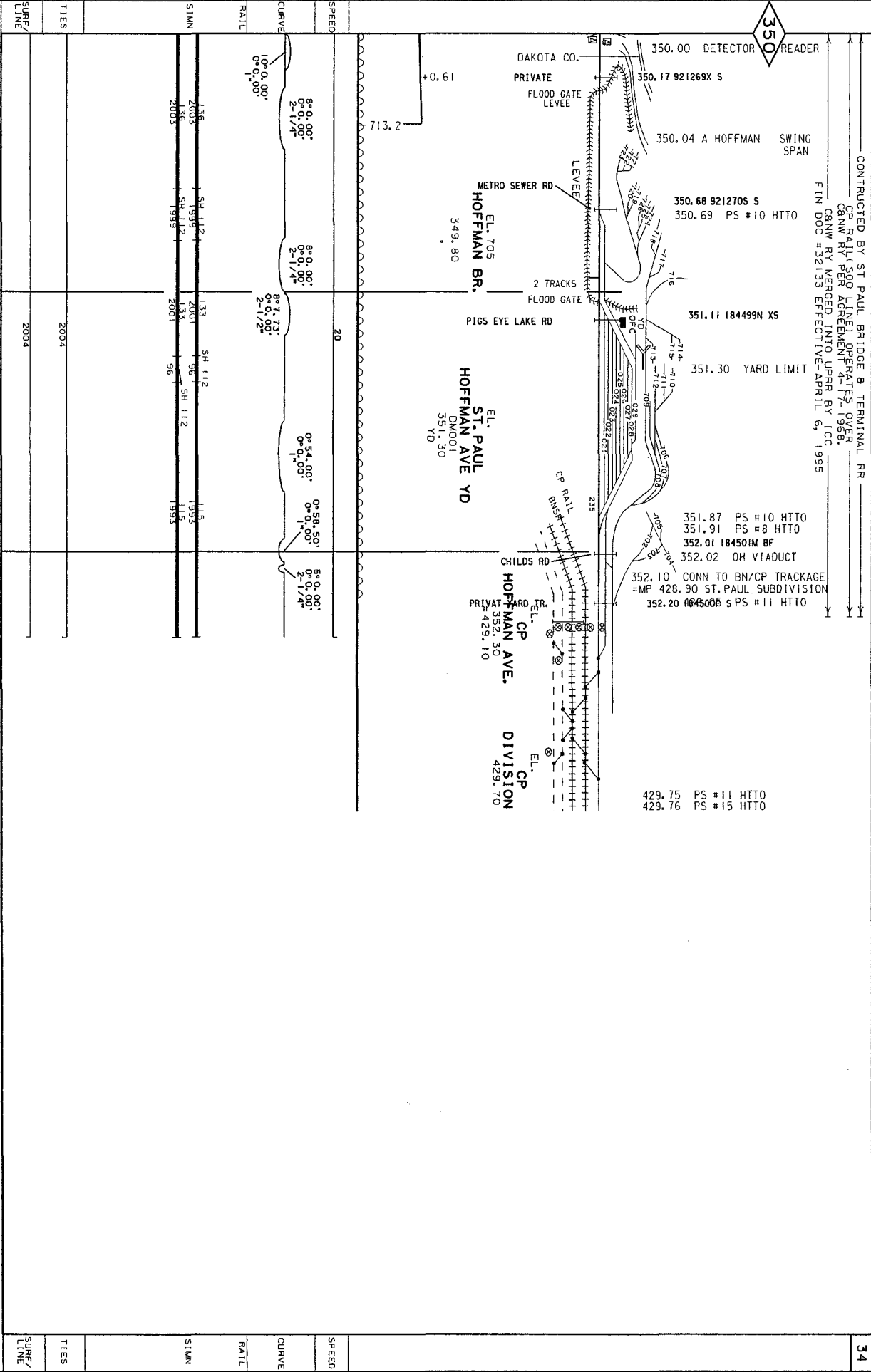


CONSTRUCTED BY ST PAUL BRIDGE & TERMINAL RR
 CP RAIL (500 LINE) OPERATES OVER
 CANW RY PER AGREEMENT 4-17-1968.
 FIN DOC #32133 EFFECTIVE-APRIL 6, 1995

350



Sheet: 34
 Date: 12/21/2006
 Project: P:\N2 twin cities\voiges\albert_100 sub\04\180_34.dgn

345

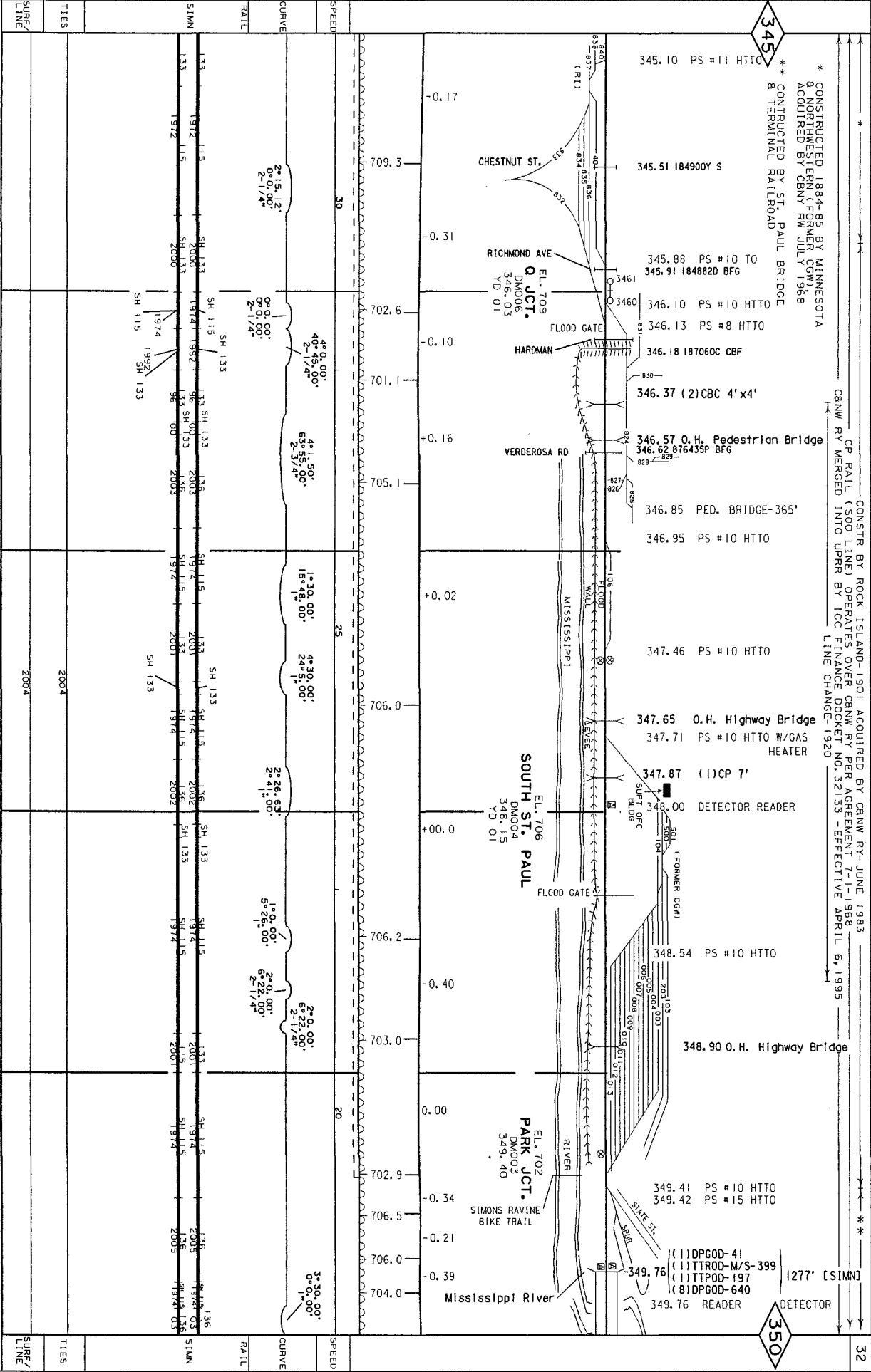
* CONSTRUCTED 1884-85 BY MINNESOTA
8 NORTHWESTERN (FORMER C&N)
ACQUIRED BY CB&N RN JULY 1968
* CONSTRUCTED BY ST. PAUL BRIDGE
& TERMINAL RAILROAD

CONSTR BY ROCK ISLAND-1901 ACQUIRED BY CB&N RY-JUNE 1983
CP RAIL (S&O LINE) OPERATES OVER CB&N RY PER AGREEMENT 7-1-1988
CB&N RY MERGED INTO UPRR BY ICC FINANCE DOCKET NO. 32133 - EFFECTIVE APRIL 6, 1995
LINE CHANGE-1920

ALBERT LEA SUB

32

350



Last Updated 01/20/2006

PLAN twin cities\ropes\albert lea sub\04180_32.dwg

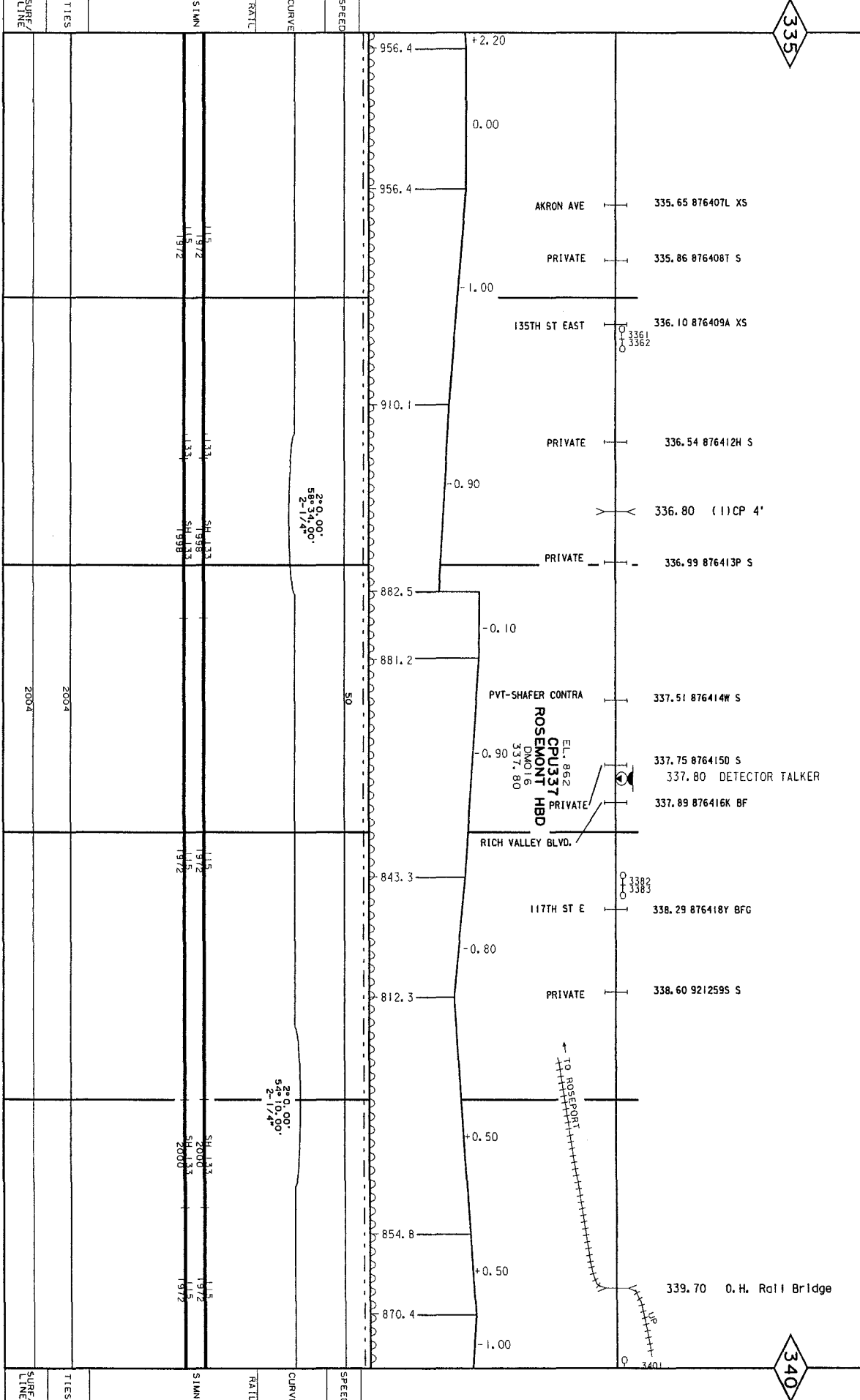
CONSTRUCTED BY ROCK ISLAND LINES-1901 ACQUIRED BY CNW RY-JUNE 1983
 CP RAIL (500 LINE) OPERATES OVER CNW RY PER AGREEMENT 7-1-1968
 CNW RY MERGED INTO UPRR BY ICC FINANCE DOCKET NO. 32133 - EFFECTIVE APRIL 6, 1995

ALBERT LEA SUB

30

335

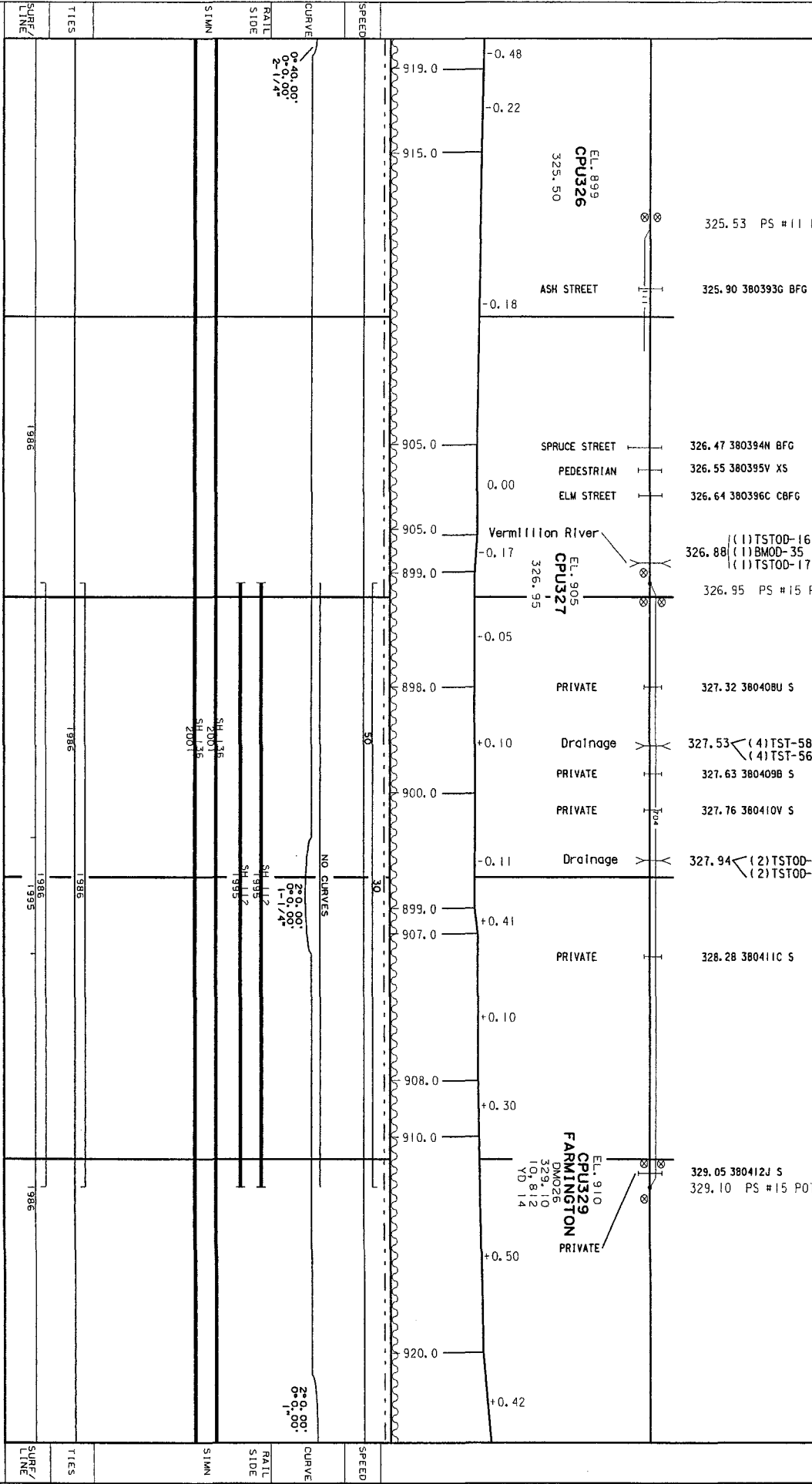
340



CONST. BY CHICAGO MILWAUKEE AND ST. PAUL RY. DATE UNKNOWN UP OPERATES OVER CRRAL (500 LINE) LINE DISPATCHED BY UP & MAINTAINED BY (500 LINE) PER AGREEMENT 11-23-1901 & 5-15-1943
 CANW RY OPERATES OVER CRRAL (500 LINE) LINE DISPATCHED BY CANW RY & MAINTAINED BY 500 LINE PER AGREEMENT
 UP RR TO MAINTAIN, OPERATE AND DISPATCH LINE FROM MP 306.50 TO MP 333.50 PER AGREEMENT #177933 DATED 4/7/04

325

330

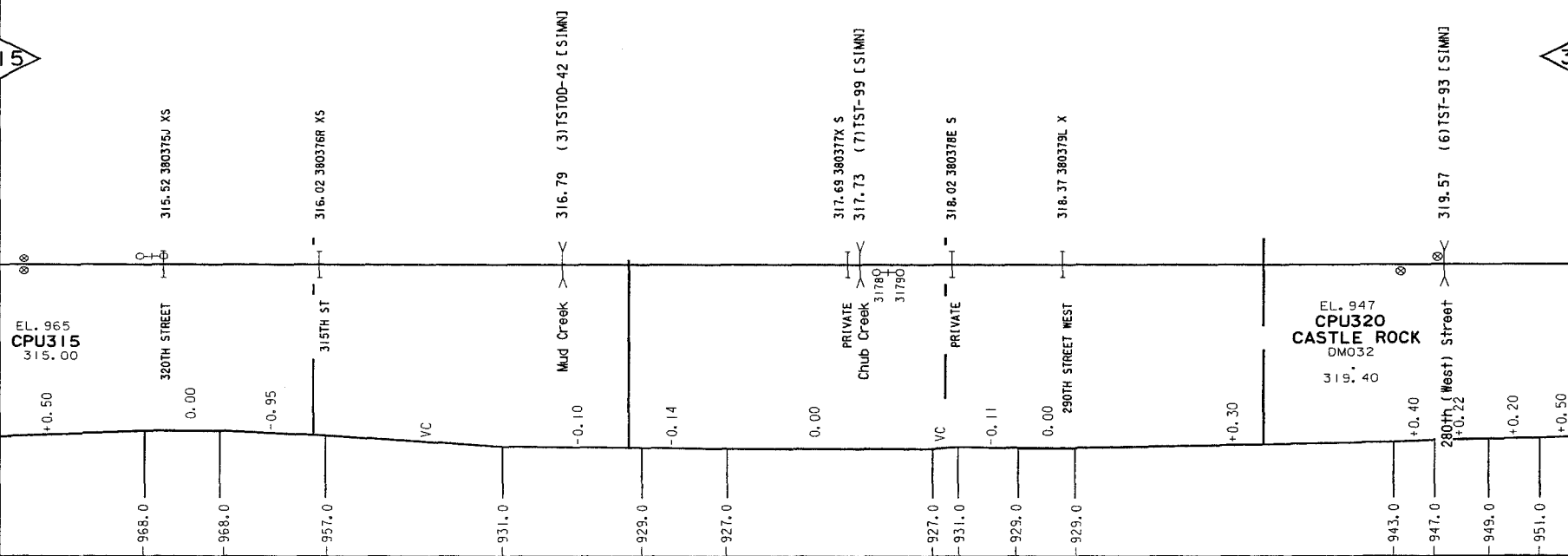


CONST. BY CHICAGO MILWAUKEE AND ST. PAUL RY. DATE UNKNOWN UP OPERATES OVER CPRAIL (500 LINE) LINE DISPATCHED BY UP & MAINTAINED BY (500 LINE) PER AGREEMENT 11-23-1901 & 5-15-1943
 C&NW RY MERGED INTO UPRR BY ICC FINANCE DOCKET NO. 32133 - EFFECTIVE APRIL 6, 1995
 C&NW RY OPERATES OVER CPRAIL (500 LINE) LINE DISPATCHED BY C&NW RY & MAINTAINED BY 500 LINE PER AGREEMENT 11-23-1901 & 5-15-1943
 UPRR TO MAINTAIN, OPERATE AND DISPATCH LINE FROM MP 306.50 TO MP 333.50 PER AGREEMENT #177933 DATED 4/7/04

26

315

320

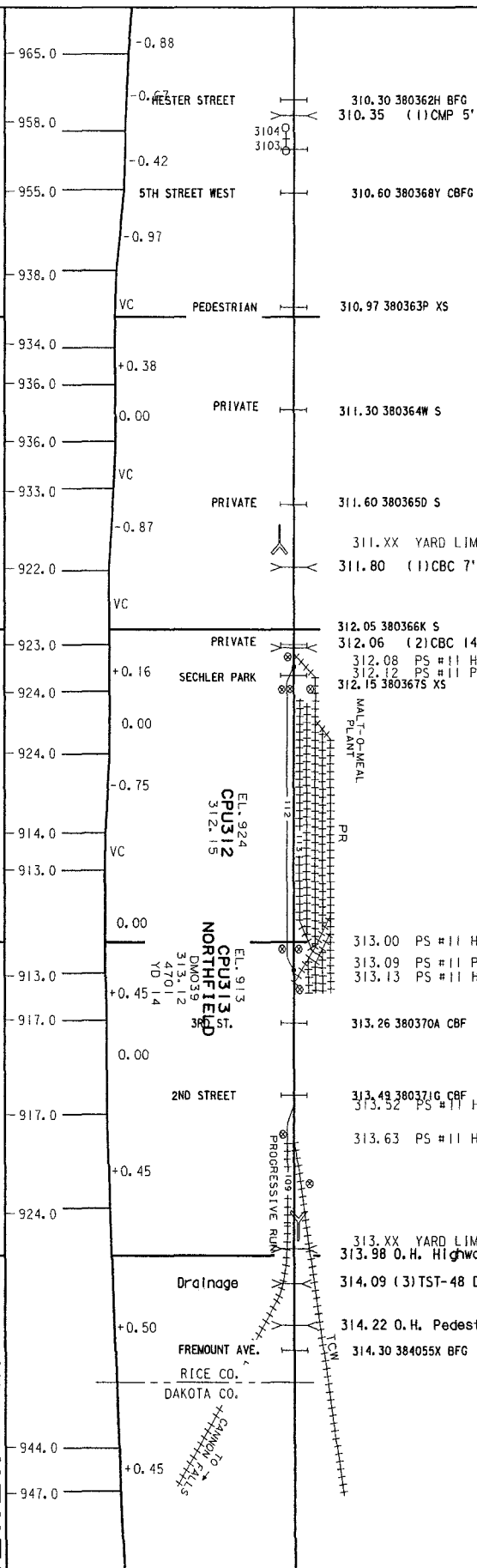


SPEED			50						
CURVE		0° 40.00'	0° 0.00'						
RAIL									
SIMN		SH 133 2001				SH 132 1995			
TIES								1999	
SURF/LINE								1999	

CONST. BY CHICAGO MILWAUKEE AND ST. PAUL RY. DATE UNKNOWN UP OPERATES OVER CRRAL (SOO LINE) LINE DISPATCHED BY UP & MAINTAINED BY (SOO LINE) PER AGREEMENT 11-23-1901 & 5-15-1943
 C&NW RY OPERATES OVER CRRAL (SOO LINE) LINE DISPATCHED INTO UPRR BY ICC FINANCE DOCKET NO. 52733 - EFFECTIVE APRIL 6, 1995
 IRRL HAS TRACKAGE RIGHTS FROM COMDS TO NORTH FIELD
 UPRR TO MAINTAIN, OPERATE AND DISPATCH LINE FROM MP 306.50 TO MP 333.50 PER AGREEMENT # 177933 DATED 4/7/04

310

315



SURF/ LINE	TIES	SLMN	RATL	CURVE	SPEED
2001	2001	SH 133		1+0.00' 0+0.00' 2-1/4"	40
2001	2001	SH 133		NO CURVES	10
2005	2005	SH 90 1986		3+30.00' 0+0.00' 3-1/4"	25
2005	2005	SH 136		NO CURVES	50
2001	1999	SH 136			
2001	1999	SH 136			
2001	1999	SH 133			

305

310

CONSTRUCTED BY CHICAGO, MILWAUKEE & ST. PAUL RY-DATE UNKNOWN

CB&N RY MERGED INTO UPRR BY ICC FINANCE DOCKET NO. 32133 -EFFECTIVE APRIL 6, 1995

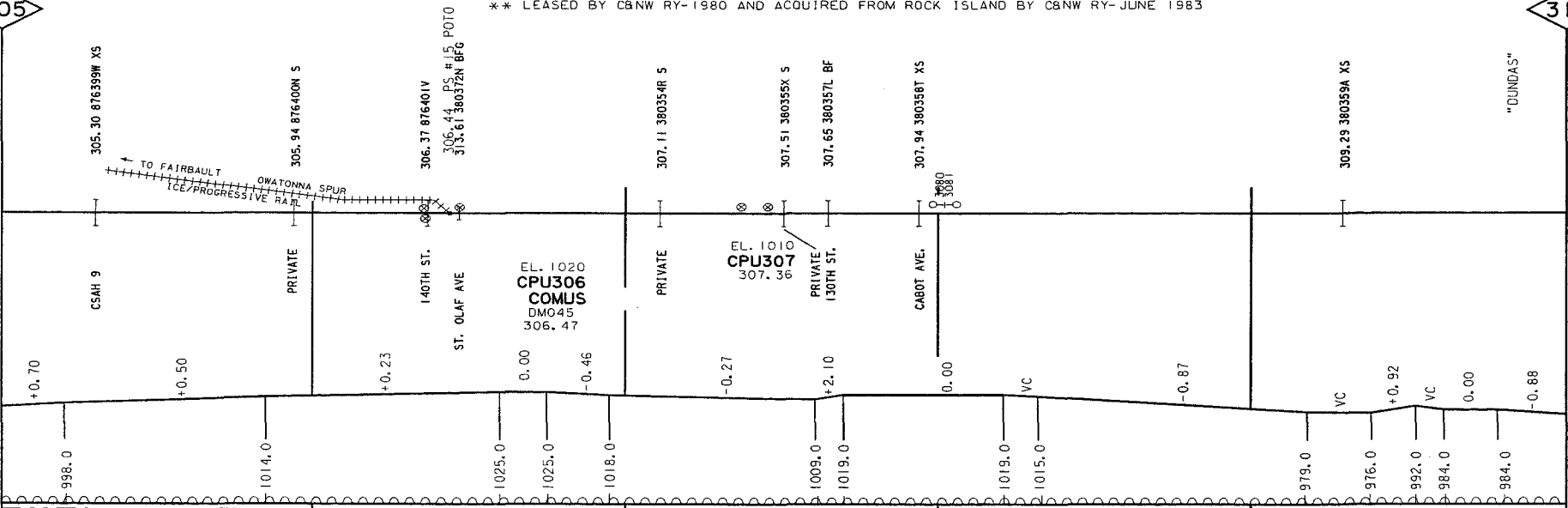
CB&N RY OPERATES OVER CP (500) RAIL LINE DISPATCHED BY CB&N RY MAINTAINED BY CP (500) LINE PER AGREEMENT 11-23-1901 & 5-15-1943

IMRL HAS TRACKAGE RIGHTS FROM COMUS TO NORTHFIELD

UPRR TO MAINTAIN, OPERATE AND DISPATCH LINE FROM MP 306.5 TO MP 333.50 PER AGREEMENT #177933 DATED 4/7/04

* CONSTRUCTED BY BURLINGTON, CEDAR RAPIDS, AND NORTHERN RY CO. OF IOWA (ROCK ISLAND)-1901

** LEASED BY CB&N RY-1980 AND ACQUIRED FROM ROCK ISLAND BY CB&N RY-JUNE 1983



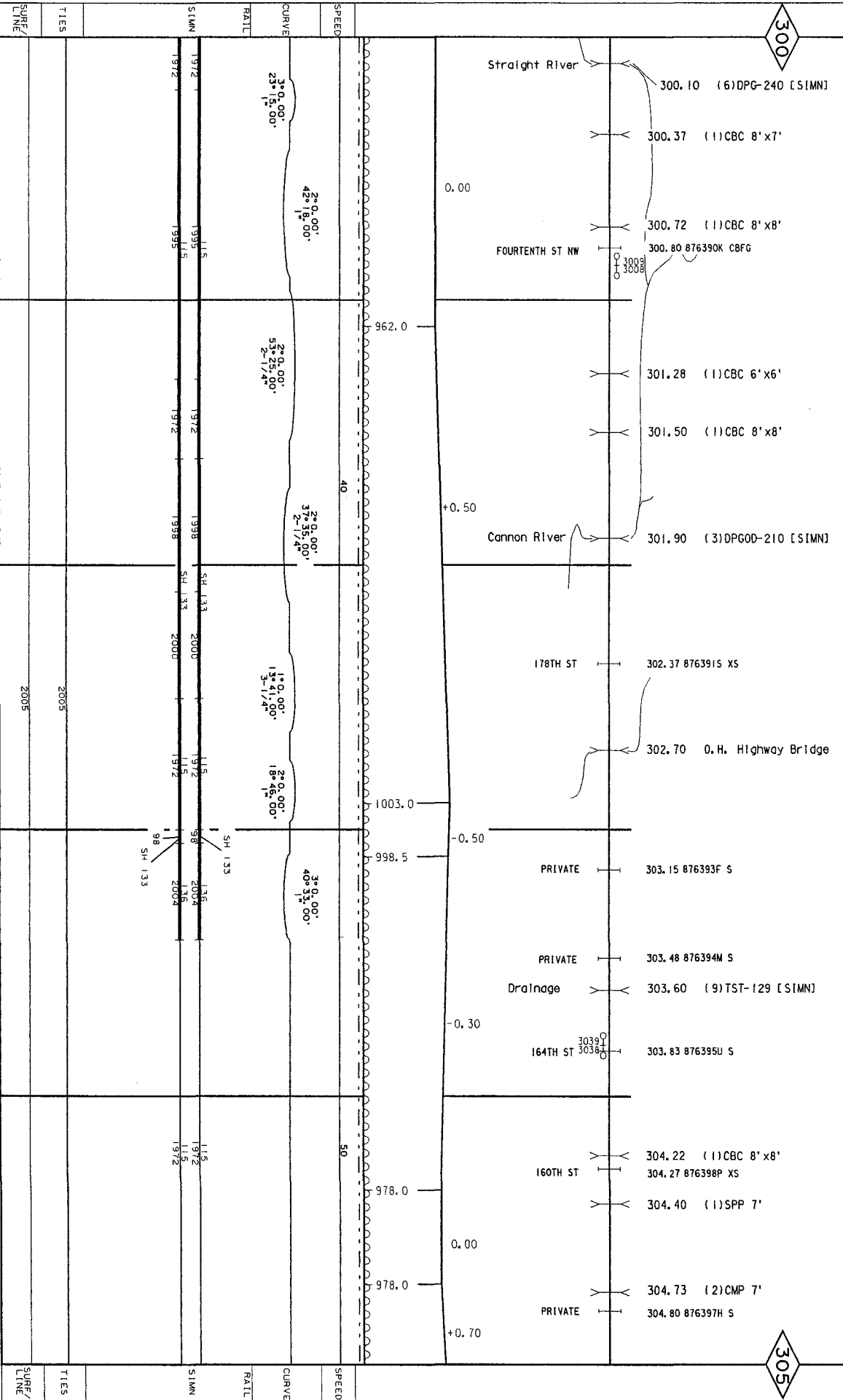
SPEED	50				40		
CURVE	2° 0.00' 34° 7.00' 2-1/4"		2° 16.00' 21° 10.00' 2-1/4"		0° 30.00' 0° 0.00' 3-1/4"		1° 0.00' 0° 0.00' 1"
RAIL							
SIMN	SH 133 1999	115 1972	SH 133 1999	136 2005	SH 133 2001	SH 133 2001	
TIES	2005				2001		
SURF/LINE	2005				2001		

CONSTRUCTED BY BURLINGTON, CEDAR RAPIDS, AND NORTHERN RY CO. OF IOWA (ROCK ISLAND)-1901
 LEASED BY C&NW RY-1980 AND ACQUIRED FROM ROCK ISLAND BY C&NW RY-JUNE 1983
 C&NW RY MERGED INTO UPRR BY ICC FINANCE DOCKET NO. 32133 -EFFECTIVE APRIL 6, 1995

ALBERT LEA SUB

300

305



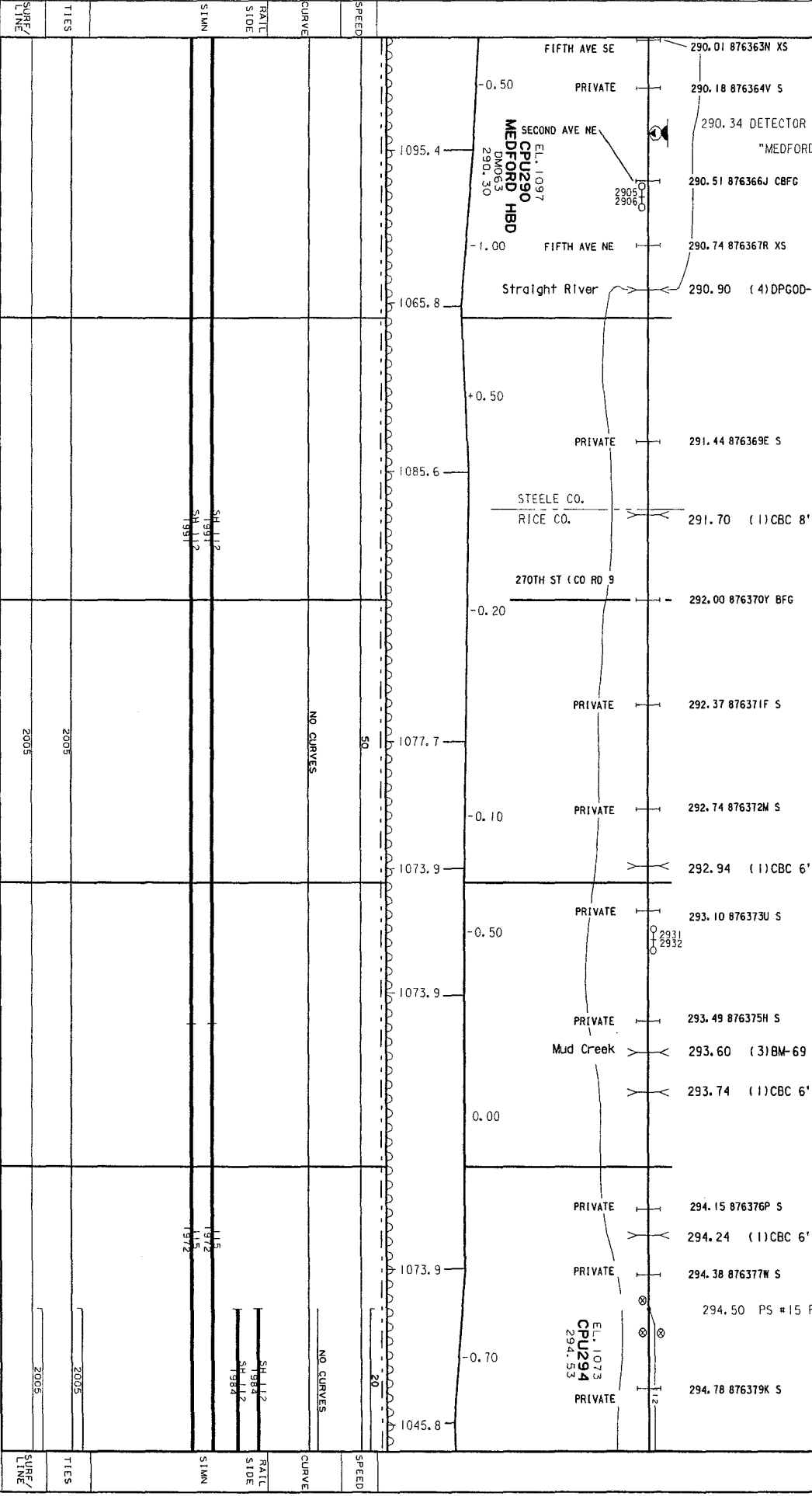
STATION	CURVE	RATE	SPEED	TIES	SURF/LINE
1972	3° 0.00' / 23° 15.00'				
1972	2° 0.00' / 42° 15.00'		40		
1972	2° 0.00' / 53° 25.00'				
1972	3° 0.00' / 2° 17.40'		40		
1972	1° 0.00' / 3° 17.40'				
1972	2° 0.00' / 18° 46.00'				
1972	3° 0.00' / 40° 33.00'		50		

CONSTRUCTED BY BURLINGTON, CEDAR RAPIDS, AND NORTHERN RY CO. OF IOWA (ROCK ISLAND) - 1901
 LEASED BY CNW RY - 1980 AND ACQUIRED FROM ROCK ISLAND BY CNW RY - JUNE 1, 1983
 CNW RY MERGED INTO UPRR BY ICC FINANCE DOCKET NO. 32133 - EFFECTIVE APRIL 6, 1995

ALBERT LEA SUB

290

295



SURF/	TILES	SLIMN	RATE	CURVE	SPEED
LINE			SH 112 1991 SH 112 1991	NO CURVES	50
2005	2005			NO CURVES	20
2005	2005		SH 112 1983 SH 112 1984	NO CURVES	
2005	2005		SH 112 1972 SH 112 1972	NO CURVES	

CONSTRUCTED BY BURLINGTON, CEDAR RAPIDS, AND NORTHERN RY CO. OF IOWA (ROCK ISLAND) - 1901
EASEMENT ON CANW RY, 1967 AND BY CANW RY, JUNE 1983
CANW RY MERGED INTO UPRR BY ICC FINANCE DOCKET NO. 52133 - EFFECTIVE APRIL 6, 1995

285

290

285.37 PS #15 POTO W/GAS HTR
285.42 (1)CBC 10'x6'

EL. 1125
CPUSBS
OMATONNA
DM0068
285.40
62110
YD 02

-0.30

112.5

+0.80

26TH ST NW

285.93 876356D CBF8

1129.0

286.08 (1)CBC 12'x12'

+0.50

NW 21ST AVE

286.36 (1)CBC 8'x8'

286.55 876357K

1145.1

NW 36TH ST

286.94 876358S XS

Straight River

287.50 ((1)DPG0D-50
((1)DTROD-115
((1)DPG0D-50) 215' [S1MM]

500 Line Rail

287.80 ((1)DPG0D-44
((1)TPG0D-78
((1)BM0D-41) 163' [S1MM]

-0.50

NW 50TH ST

287.99 (1)SPP 8'

288.25 876359Y XS

"CLINTON FALLS"

-0.50

PRIVATE

289.23 (1)CBC 10'x6'

289.26 876361A S

PRIVATE

289.47 8763620 S

1083.0

+0.95

1111.8

-0.50

SPEED	10	50	40	50
-------	----	----	----	----

CURVE	NO CURVES	1+0.00' 2-17.40'	1+0.00' 3-17.40'	3+0.00' 41-20.00'	1+0.00' 180-58.00'
-------	-----------	---------------------	---------------------	----------------------	-----------------------

RATL					
------	--	--	--	--	--

S1MN	SH 112 1991	SH 133 1998	SH 112 1991	SH 136 2004	SH 112 1991
------	----------------	----------------	----------------	----------------	----------------

S1DE	SH 112 1984	SH 112 1984	SH 112 1991	SH 116 2004	SH 112 1991
------	----------------	----------------	----------------	----------------	----------------

T1E3	2005		2005	2005	
------	------	--	------	------	--

SURF/	2005		2005	2005	
-------	------	--	------	------	--

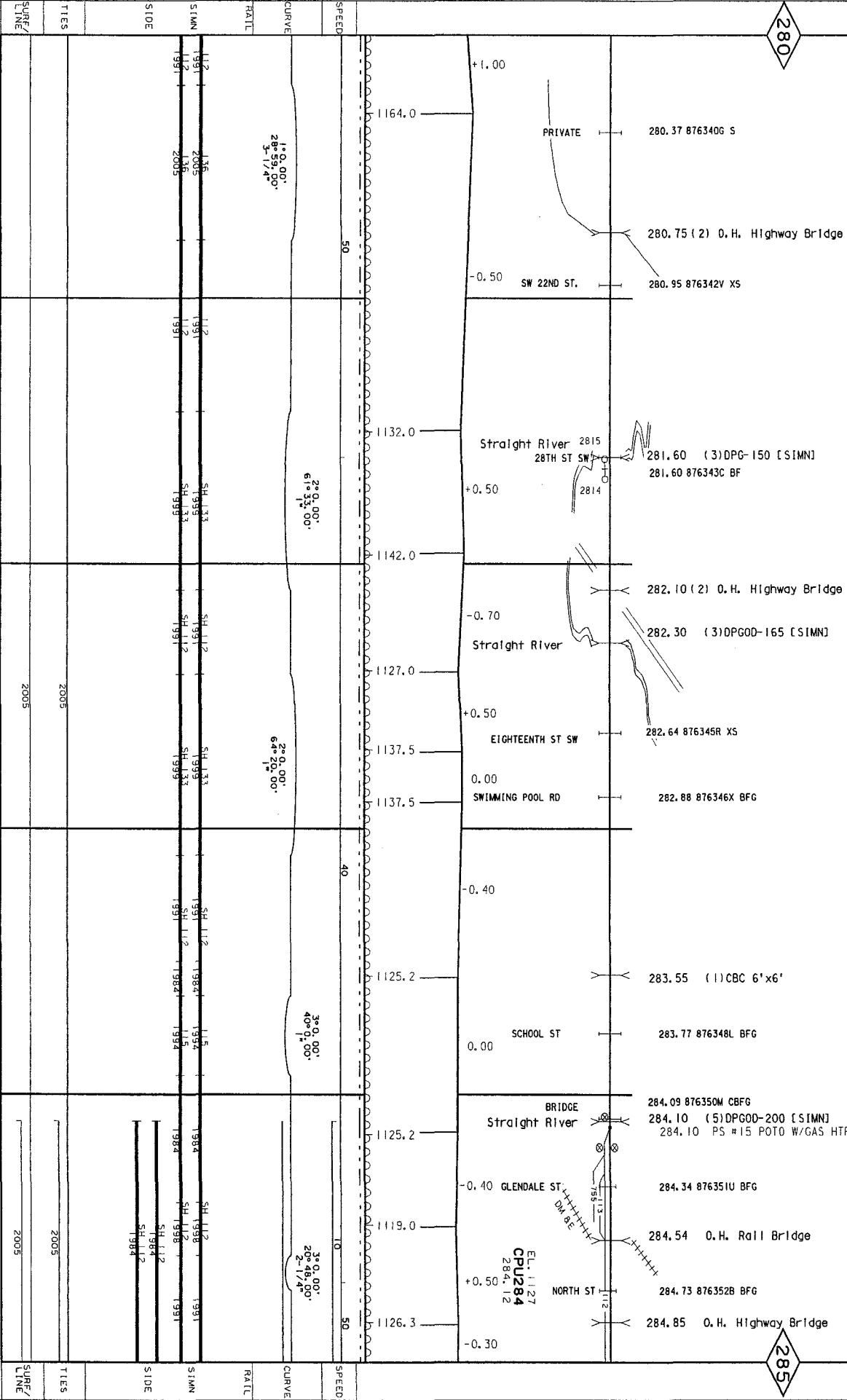
SURF/	2005		2005	2005	
-------	------	--	------	------	--

CONSTRUCTED BY BURLINGTON, CEDAR RAPIDS, AND NORTHERN RY CO. OF IOWA (ROCK ISLAND) - 1901
 LEASED BY CANW RY - 1980 AND ACQUIRED FROM ROCK ISLAND BY CANW RY - JUNE 1983
 CANW RY MERGED INTO UPRR BY ICC FINANCE DOCKET NO. 32133 - EFFECTIVE APRIL 6, 1995

ALBERT LEA SUB

280

285



Last Updated 10/02/2006

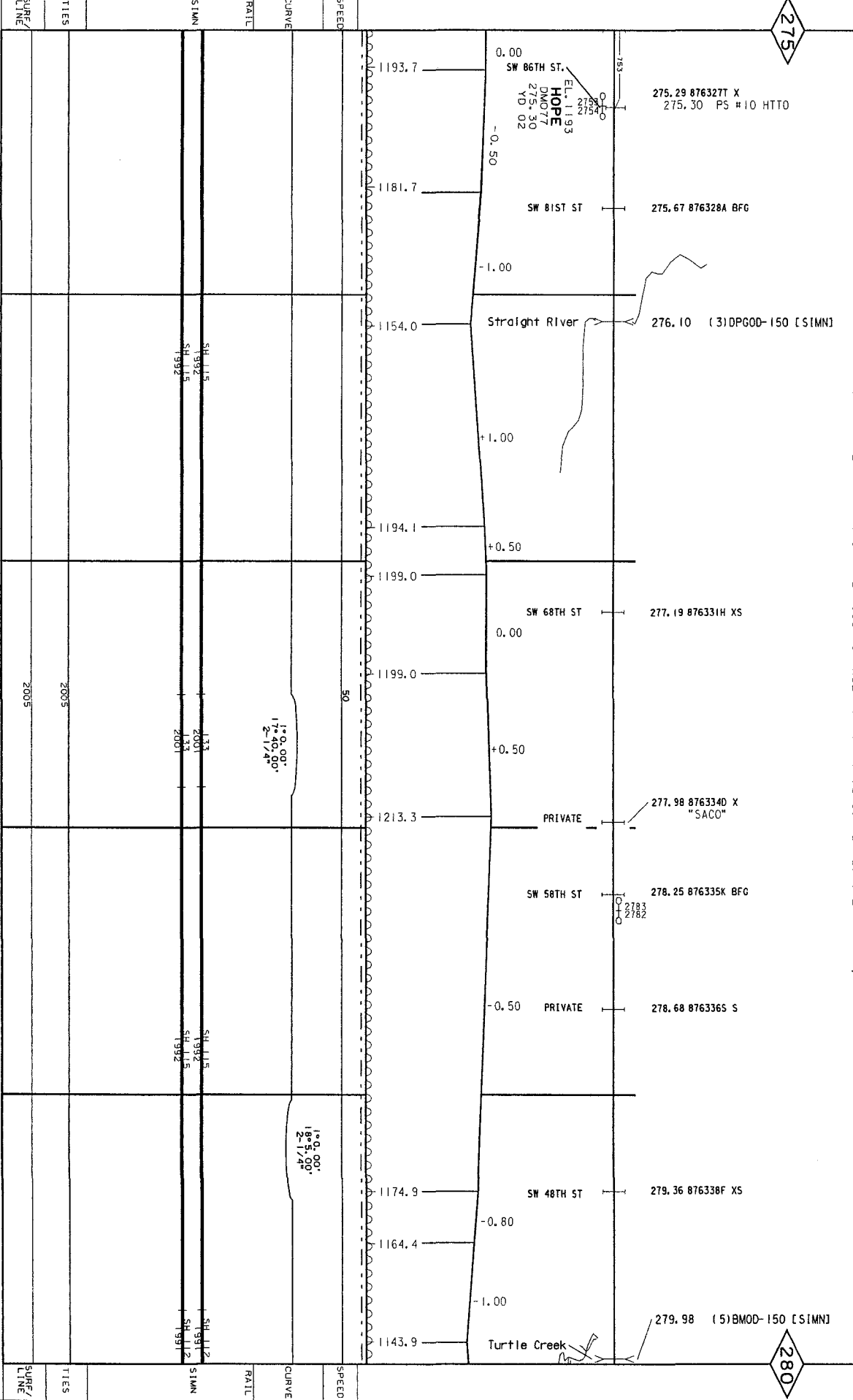
p:\v2 +win cities\p0000\albert+lea sub\04V801B.dgn

CONSTRUCTED BY BURLINGTON, CEDAR RAPIDS, AND NORTHERN RY CO. OF IOWA (ROCK ISLAND)-1901
 LEASED BY CNW RY-1980 AND ACQUIRED FROM ROCK ISLAND BY CNW RY-JUNE 1983
 CNW RY MERGED INTO UPRR BY ICC FINANCE DOCKET NO. 32133 - EFFECTIVE APRIL 6, 1995

ALBERT LEA SUB

275

280



CONSTRUCTED BY BURLINGTON, CEDAR RAPIDS, AND NORTHERN RY CO. OF IOWA (ROCK ISLAND) - 1901
 LEASED BY CANW RY- 1980 AND ACQUIRED FROM ROCK ISLAND BY CANW RY- JUNE 1983
 CANW RY MERGED INTO UPRR BY ICC FINANCE DOCKET NO. 32133 - EFFECTIVE APRIL 6, 1995

270

275

POTO W/
GAS HTR

270.03 PS #15

EL. 1135
CPUZ70
ELLENDALE
 DM083
 270.03
 7255
 YD 02

SW 133RD ST
 -0.40

270.57 876312D XS

PRIVATE

270.82 876313K S

1237.7

1224.7

PRIVATE

271.46 876315Y S

-0.50

PRIVATE

271.71 (1)CBC 5'x5'
 271.76 876316F S

272.19
 272.00

SW 42ND AVE

272.19 876317M XS

Geneva River

272.30 (3)BM-100 [SIMN]

1188.0

PRIVATE

272.55 876318U S

0.00

PRIVATE

272.67 (1)CBC 5'x6'
 272.68 876319B S

1.49,00'
 5.49,00'

1188.0

SW 108TH ST

273.13 876321C BFG

-0.50

PRIVATE

273.37 (1)CBC 5'x5'

1175.6

0.00

1175.6

274.01 (1)CBC 10'x8'

+0.40

SW 93RD ST

274.66 876325E XS

0.00

PRIVATE

"SUN RICH ELEVATOR"
 275.00 876326L S

1193.7

SPEED

20

1.49,00'
 6.49,00'

CURVE

RAIL

SIMN

SH 112

SIDE

84

SH 84
 SH 112

TIES

2005

SURF

LINE

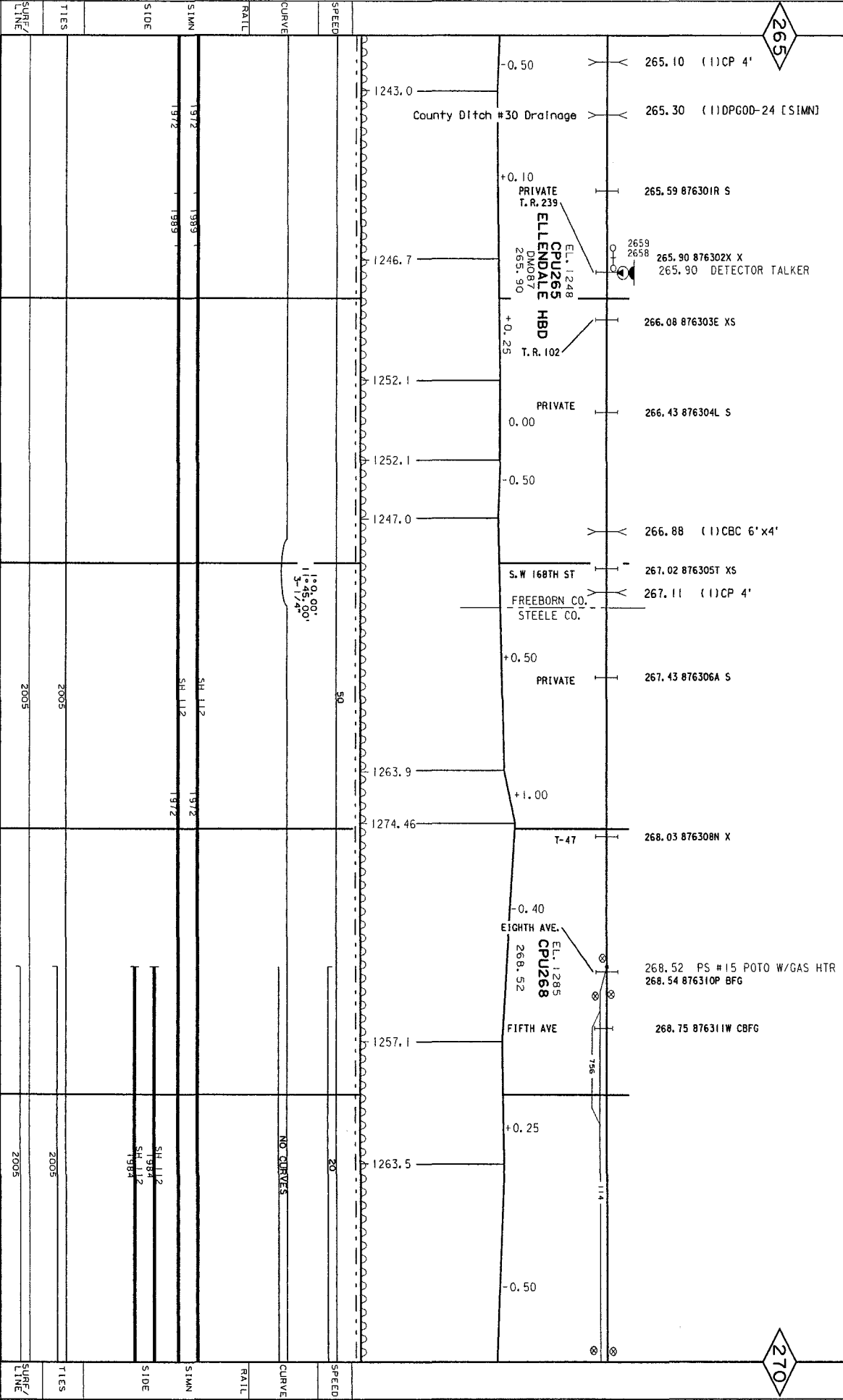
2005

CONSTRUCTED BY BURLINGTON, CEDAR RAPIDS, AND NORTHERN RY CO. OF IOWA (I ROCK ISLAND) - 1901
 LEASED BY CANW RY - 1980 AND ACQUIRED FROM ROCK ISLAND BY CANW RY - JUNE 1983
 CANW RY MERGED INTO UPRR BY ICC FINANCE DOCKET NO. 38133 - EFFECTIVE APRIL 6, 1995

ALBERT LEA SUB

265

270



Last Updated: 10/02/2006

plv2 +win dthes\pogos\alber+lea sub\021180.rle.dgn

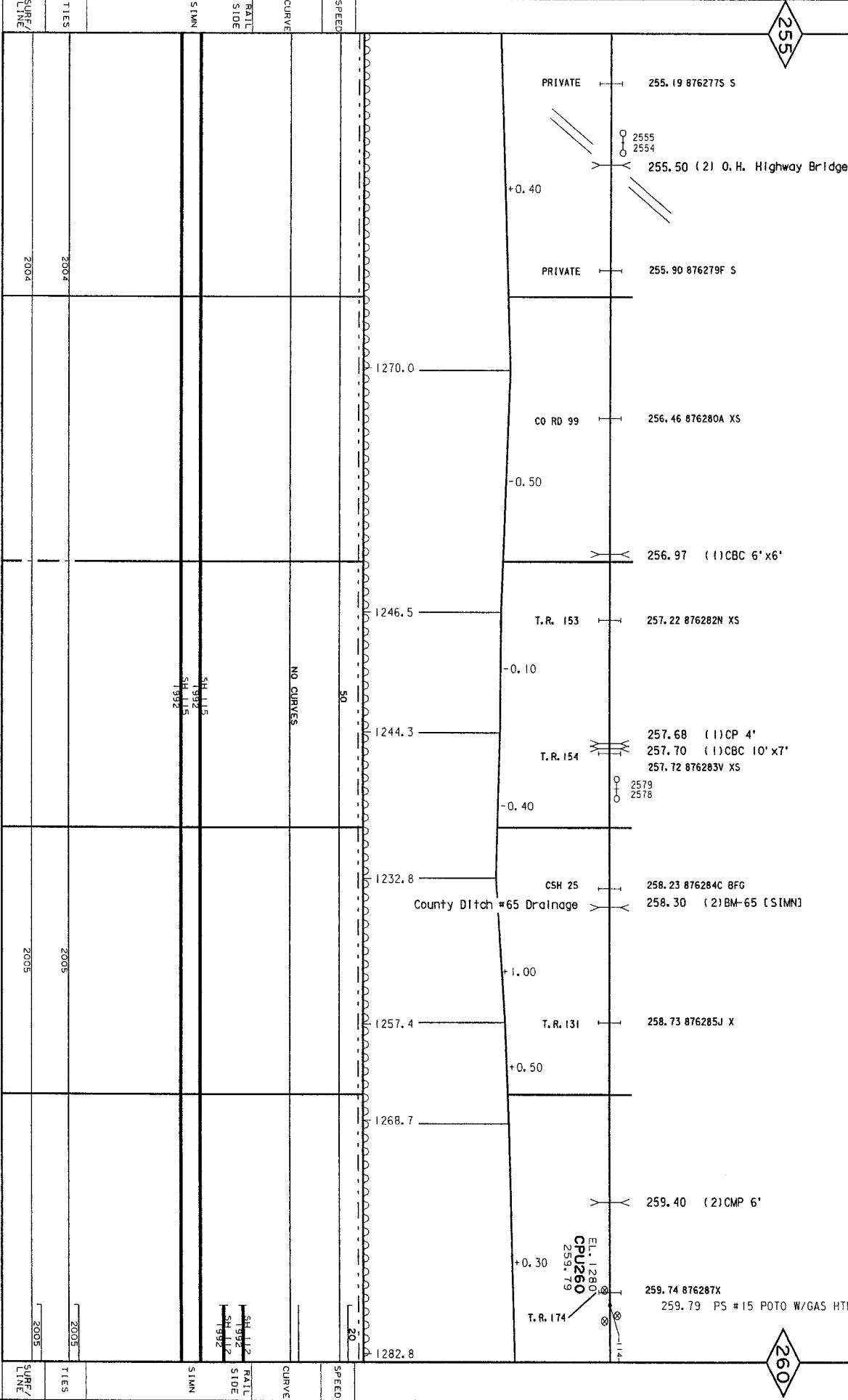
CONSTRUCTED BY BURLINGTON, CEDAR RAPIDS, AND NORTHERN RY CO. OF IOWA (ROCK ISLAND) - 1901
 LEASED BY CANW RY - 1980 AND ACQUIRED FROM ROCK ISLAND BY CANW RY - JUNE 1983
 CANW RY MERGED INTO UPRR BY ICC FINANCE DOCKET NO. 32133 - EFFECTIVE APRIL 6, 1995

255

260

ALBERT LEA SUB

12



Lost Updated: 10/22/2006

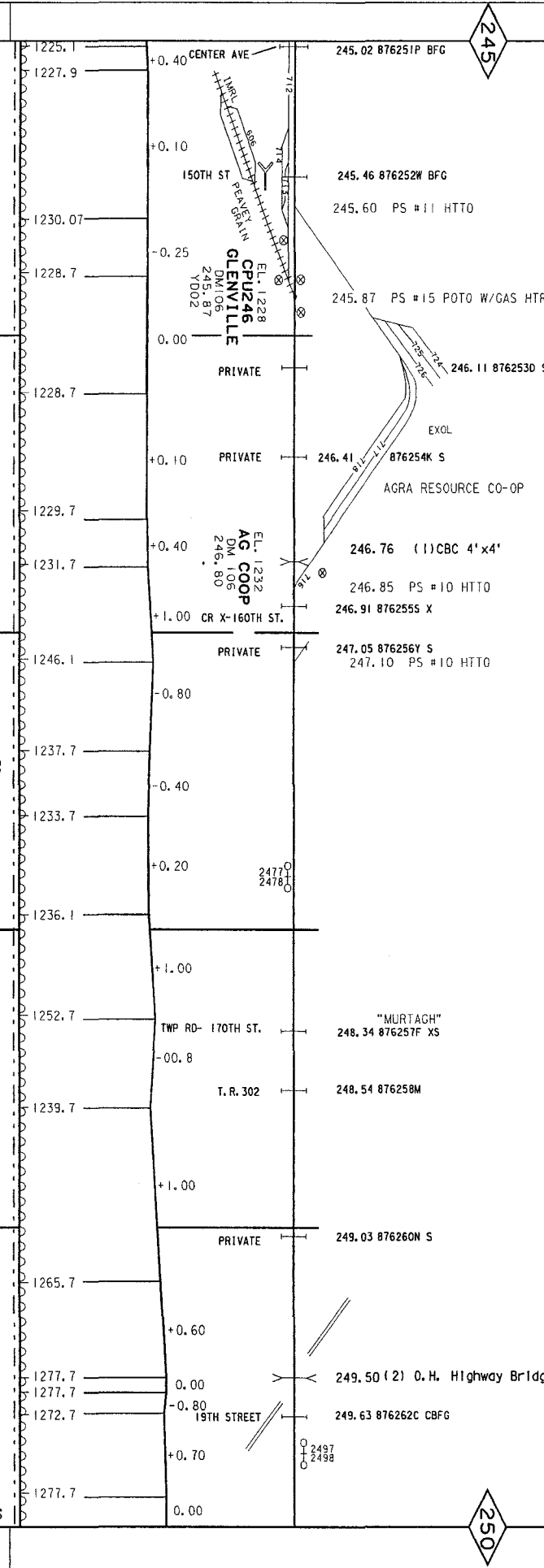
p:\12 twin cities\dogas\albert lea sub\04180.12.dgn

STATION	RAIL SIDE	CURVE	SPEED	TIES	SURF/LINE
1270.0			50	2004	2004
1246.5		NO CURVES			
1244.3					
1232.8				2005	2005
1257.4					
1268.7					
1282.8					

245

CONSTRUCTED BY ROCK ISLAND LINES-1876 ACQUIRED BY CANW RY- JUNE 1980
 CEDAR VALLEY RR OPERATES OVER UPRR TRACKAGE RIGHTS PER AGREEMENT 9-3-1986
 DAKOTA, MINNESOTA, & EASTERN RR HAS TRACKAGE RIGHTS PER AGREEMENT 9-3-1986
 CANW RY MERGED INTO UPRR BY ICC FINANCE DOCKET NO. 32133 -EFFECTIVE APRIL 6, 1995

250



STATION	CHORD	ANGLE	CHORD	ANGLE	STATION	CHORD	ANGLE	CHORD	ANGLE
1225.1	133	133	133	133	1225.1	133	133	133	133
1227.9	133	133	133	133	1227.9	133	133	133	133
1230.07	133	133	133	133	1230.07	133	133	133	133
1228.7	133	133	133	133	1228.7	133	133	133	133
1228.7	133	133	133	133	1228.7	133	133	133	133
1229.7	133	133	133	133	1229.7	133	133	133	133
1231.7	133	133	133	133	1231.7	133	133	133	133
1246.1	133	133	133	133	1246.1	133	133	133	133
1237.7	133	133	133	133	1237.7	133	133	133	133
1233.7	133	133	133	133	1233.7	133	133	133	133
1236.1	133	133	133	133	1236.1	133	133	133	133
1252.7	133	133	133	133	1252.7	133	133	133	133
1239.7	133	133	133	133	1239.7	133	133	133	133
1265.7	133	133	133	133	1265.7	133	133	133	133
1277.7	133	133	133	133	1277.7	133	133	133	133
1277.7	133	133	133	133	1277.7	133	133	133	133
1272.7	133	133	133	133	1272.7	133	133	133	133
1277.7	133	133	133	133	1277.7	133	133	133	133

cast Updatred: 05/18/2006

D:\12 twln cities\pogues\albert leg sub\04V180.10.dgn

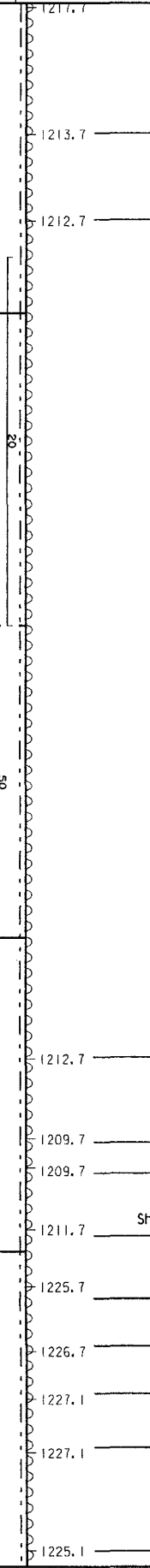
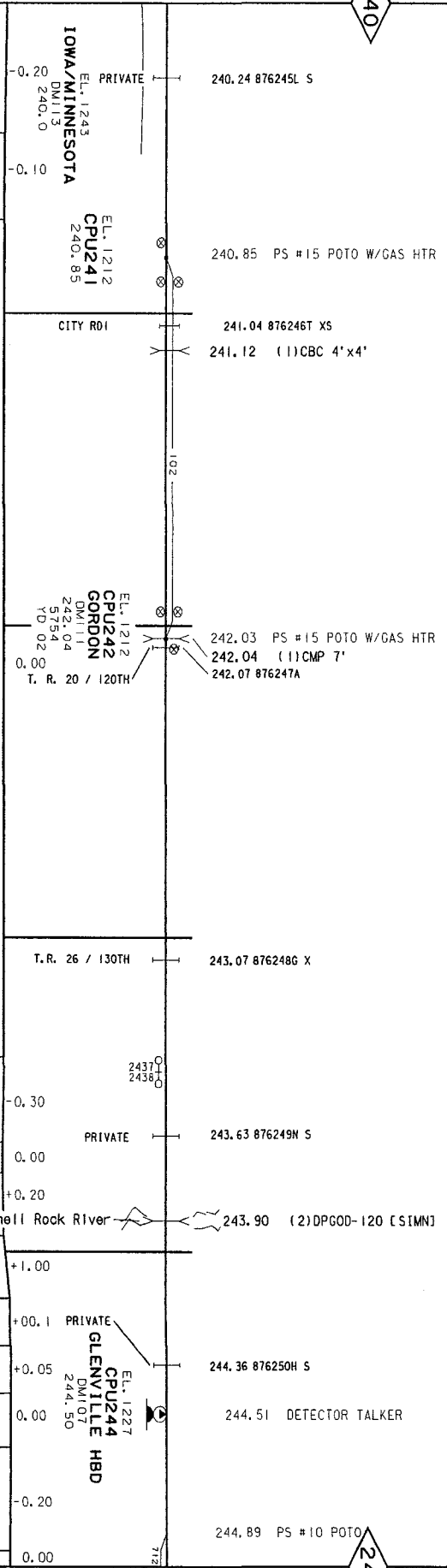
CONSTRUCTED BY ROCK ISLAND LINES-1876 ACQUIRED BY CNW RY- JUNE 1980
 DAKOTA, MINNESOTA, & EASTERN RR HAS TRACKAGE RIGHTS. PER AGREEMENT 9-3-1986
 CNW RY MERGED INTO UPRR BY ICC FINANCE DOCKET NO. 32133 - EFFECTIVE APRIL 6, 1995

ALBERT LEA SUB

9

240

245



SPEED	CURVE	RATE SIDE	SIMN	TIES	SUBF/ LINE
	NO CURVES	SH 112 1983 SH 112 1984	SH 115 1994 SH 115 1994	2004	
		SH 112 1990 SH 112 1990	SH 115 1994 SH 115 1994	2004	
		SH 112 1998 SH 112 1998	SH 115 1994 SH 115 1994	2004	
		SH 115 1994 SH 115 1994	SH 115 1994 SH 115 1994	2004	

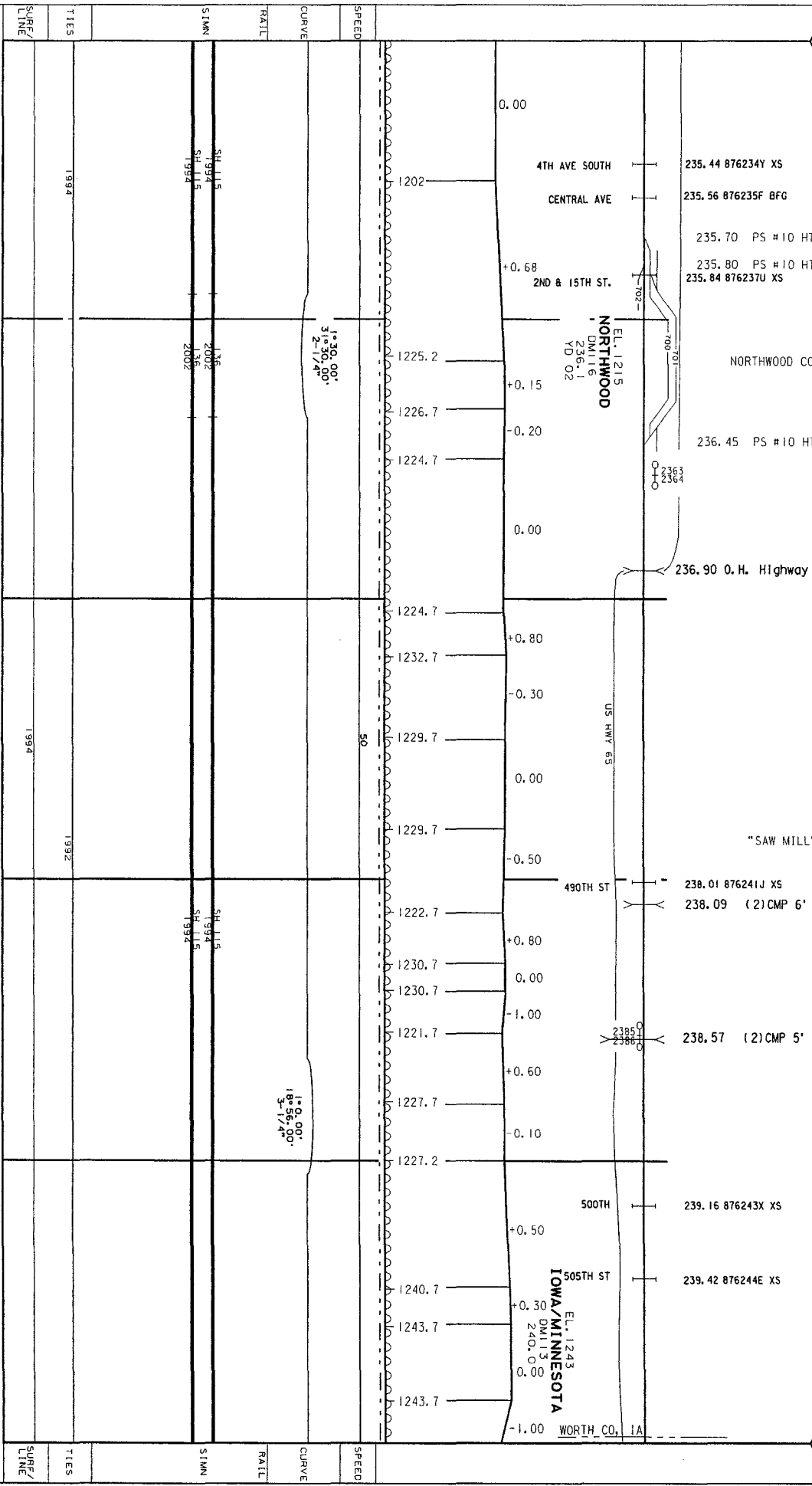
CONSTRUCTED BY ROCK ISLAND LINES - 1877
 ACQUIRED BY CB&N W RY - JUNE 1983

DAKOTA, MINNESOTA, & EASTERN RR HAS TRACKAGE RIGHTS PER AGREEMENT 9-3-1986
 CB&N RY MERGED INTO UPRR BY ICC FINANCE DOCKET NO. 32133 - EFFECTIVE APRIL 6, 1995

* CONSTRUCTED 1870-71 BY THE CENTRAL RAILROAD CO OF IOWA
 (FORMER MINNEAPOLIS & ST. LOUIS RAILROAD)
 ACQUIRED BY CB&N RAILWAY - NOVEMBER 1, 1960

235

240

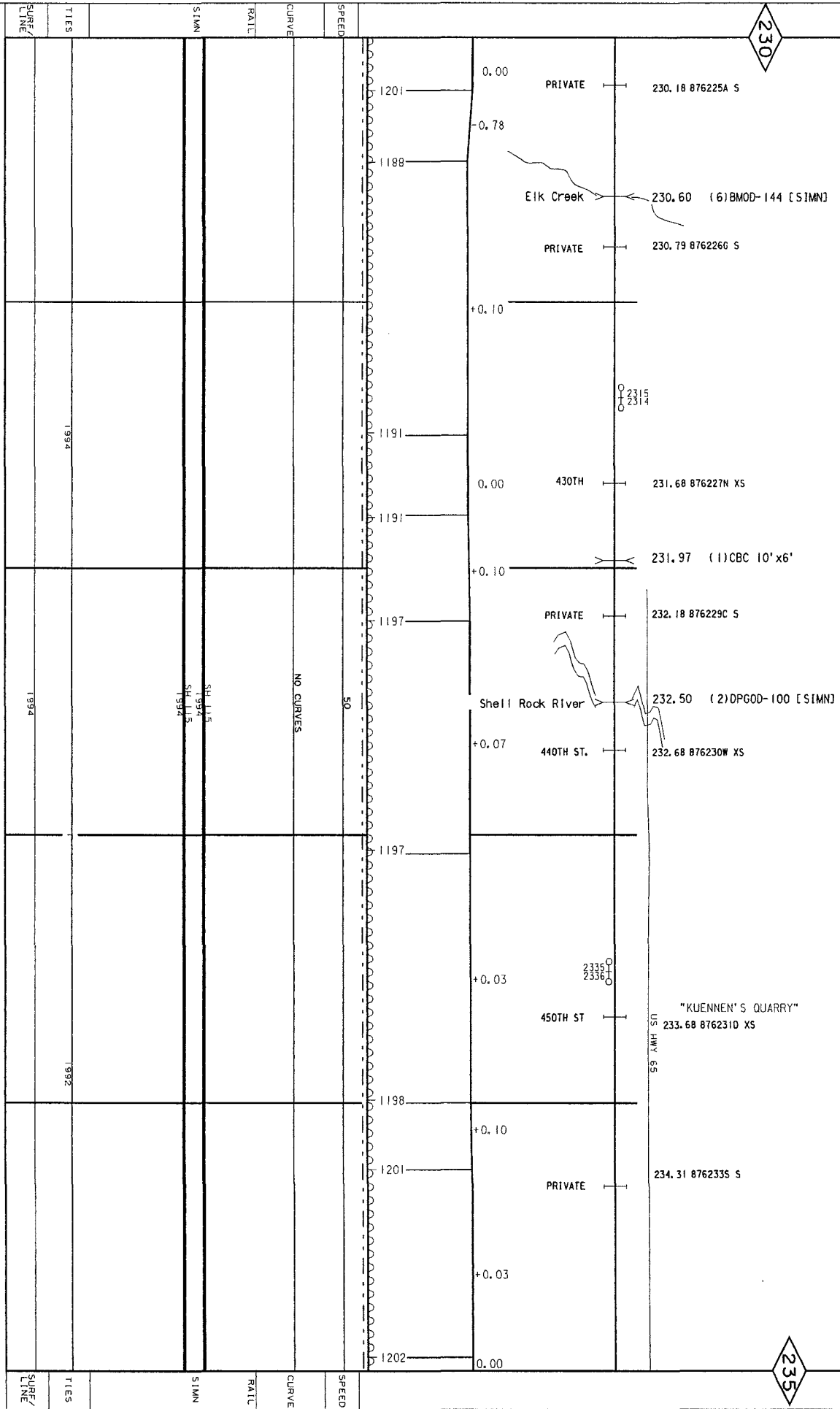


CONSTRUCTED 1870-71 BY THE CENTRAL RAILROAD CO OF IOWA (FORMER MINNEAPOLIS & ST. LOUIS RAILROAD) ————— 7
 ACQUIRED BY CNW RAILWAY - NOVEMBER 1, 1960
 DAKOTA, MINNESOTA, & EASTERN RR HAS TRACKAGE RIGHTS - PER AGREEMENT 9-3-1986
 CNW RY MERGED INTO UPRR BY ICC FINANCE DOCKET NO. 32133 - EFFECTIVE APRIL 6, 1995

ALBERT LEA SUB

230

235



*
 DAKOTA, MINNESOTA AND EASTERN RR HAS
 TRACKAGE RIGHTS PER AGREEMENT 9-3-1986
 C&NW RY MERGED INTO UPRR BY ICC FINANCE
 DOCKET NO 32133-EFFECTIVE APRIL 6, 1995

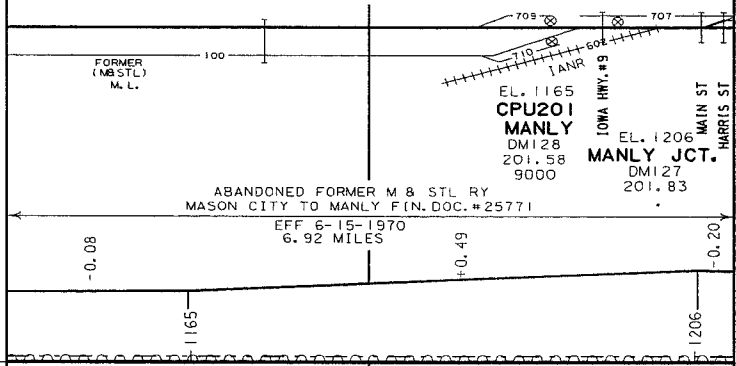
EQUATION

M. P. 202.00 M. P. 225.00

200

225

201.49 PS # 10 TO
 201.58 PS # 15 TO
 201.83 PS # 15 TO
 201.64 196369B BFG
 201.91 876213F BF
 201.92 PS # 10 TO
 201.97 876214M BFG



SPEED	50 10	30	
CURVE	NO CURVES	2° 0.00' 0° 0.00' 2-1/4"	1° 0.00' 0° 0.00' 1"
RAIL			
SIMN	SH 115 1994	133 2001	SH 115 1994
SIDE	SH 100 1994	115 2001	SH 115 1994
TIES	1994	1994	
SURF/LINE	1994	1994	

SPEED
 CURVE
 RAIL
 SIMN
 SIDE
 TIES
 SURF/
 LINE

CONSTRUCTED BY MASON CITY AND FORT DODGE RR 1901-02 (FORMER CHICAGO & GREAT WESTERN RY) ACQUIRED BY CNW RY-JULY 1968
 DAKOTA MINNESOTA AND EASTERN R.R. HAS FRACKAGE RIGHTS PER AGREEMENT 9-3-1986
 CNW RY MERGED INTO UPR RAIL CO FINANCE DOCKET NO. 2135 EFFECTIVE APRIL 6, 1995
 ABANDONED FORMER W & STL RY MASON CITY TO MANLY FIN DOC. #25171 EFFECTIVE JUNE 15, 1970 - 6.92 MILES

