

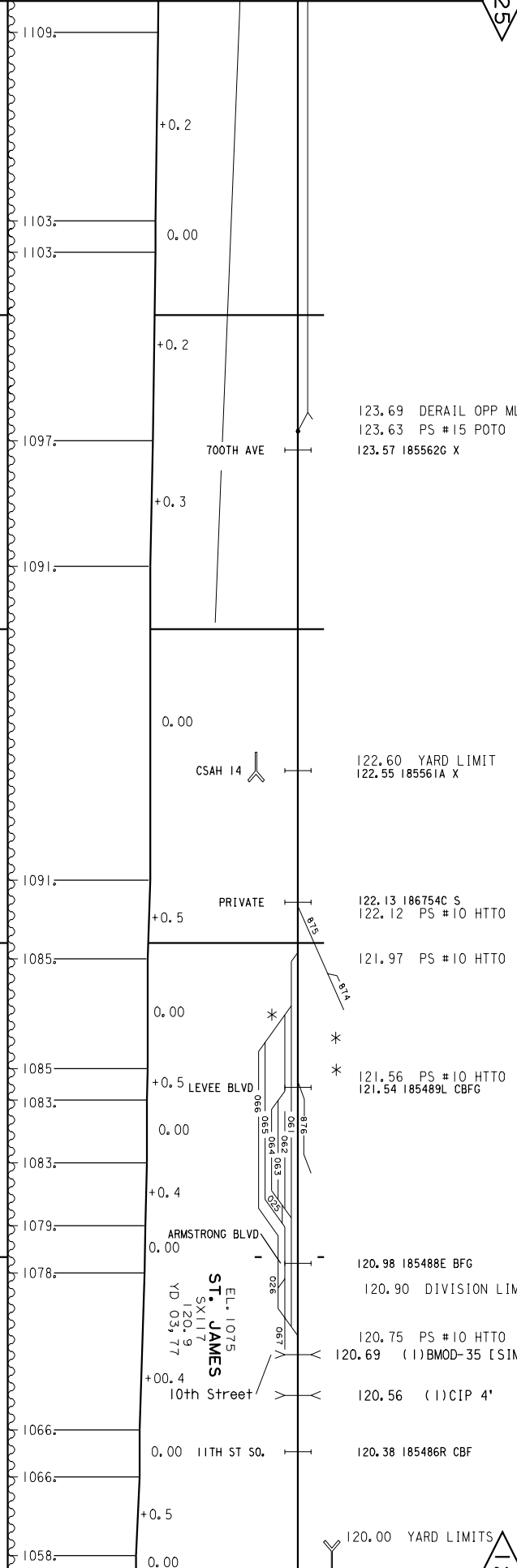
MANKATO SUB

CONSTRUCTED BY ST. PAUL AND STIOUX CITY RR - 1871
 CANW RY MERGED INTO UPRR BY ICC FINANCE DOCKET NO. 32133 - EFFECTIVE APRIL 6, 1995

CONSTRUCTED BY ST. PAUL AND STIOUX CITY RR - 1870

125

* ABANDONED ST. JAMES TO ORMSBY, MN. (DOC # 25402)
 9.40 MILES EFFECTIVE 6-2-1969
 ** ABANDONED ST. JAMES TO HANSKA (SUB # 77F)
 MP 125.8 TO MP 111.8 EFFECTIVE 12-13-1980



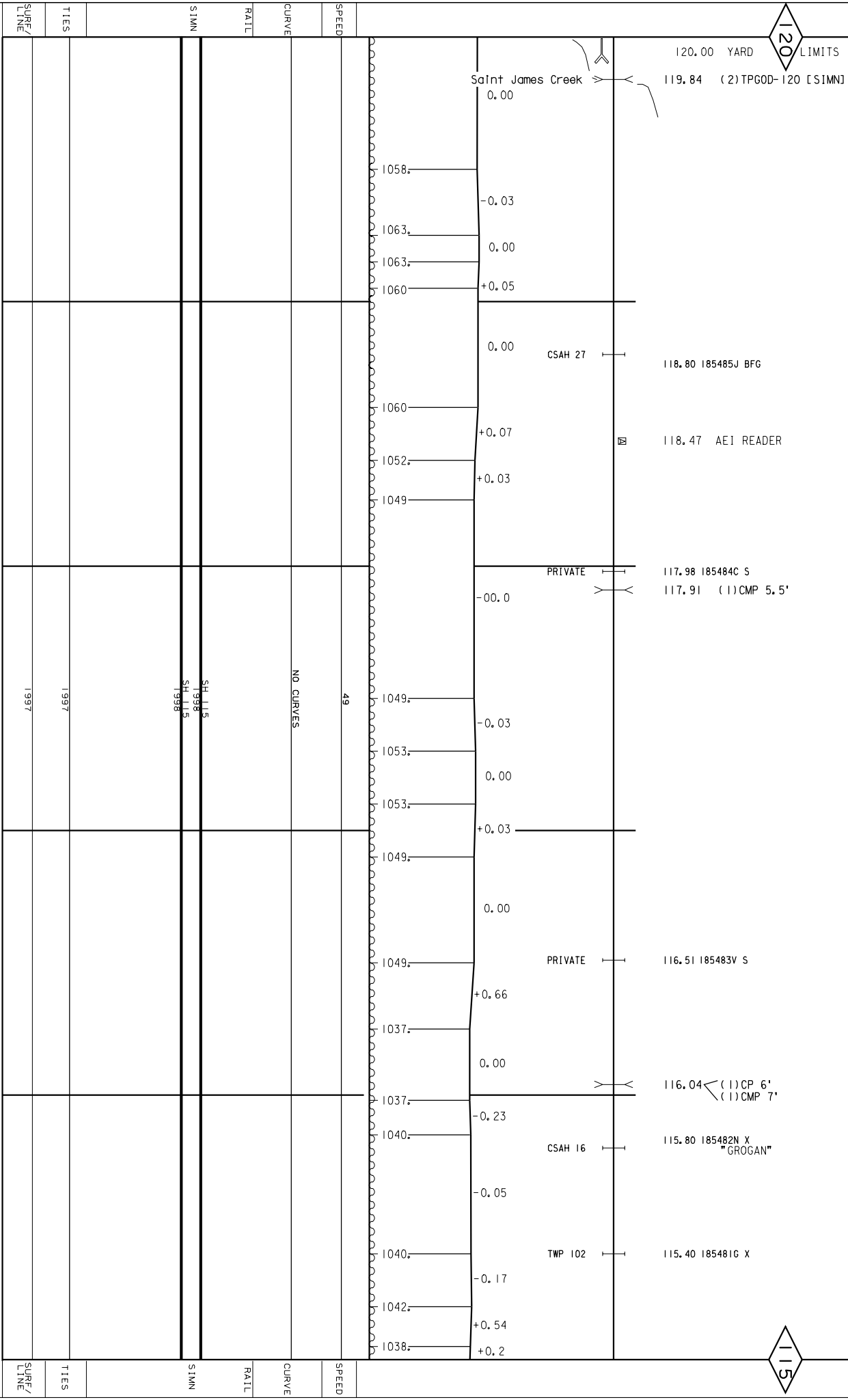
120

SPEED					
CURVE					
RAIL					
SIMN	1997	SH 115	1998	SH 115	1998
	1997	SH 115	1998	SH 115	1998
TIES					
SURF/LINE					

CONSTRUCTED BY ST. PAUL AND SIOUX CITY RR - 1870
 CANW RY MERGED INTO UPRR BY ICC FINANCE DOCKET NO. 32133 - EFFECTIVE APRIL 6, 1995

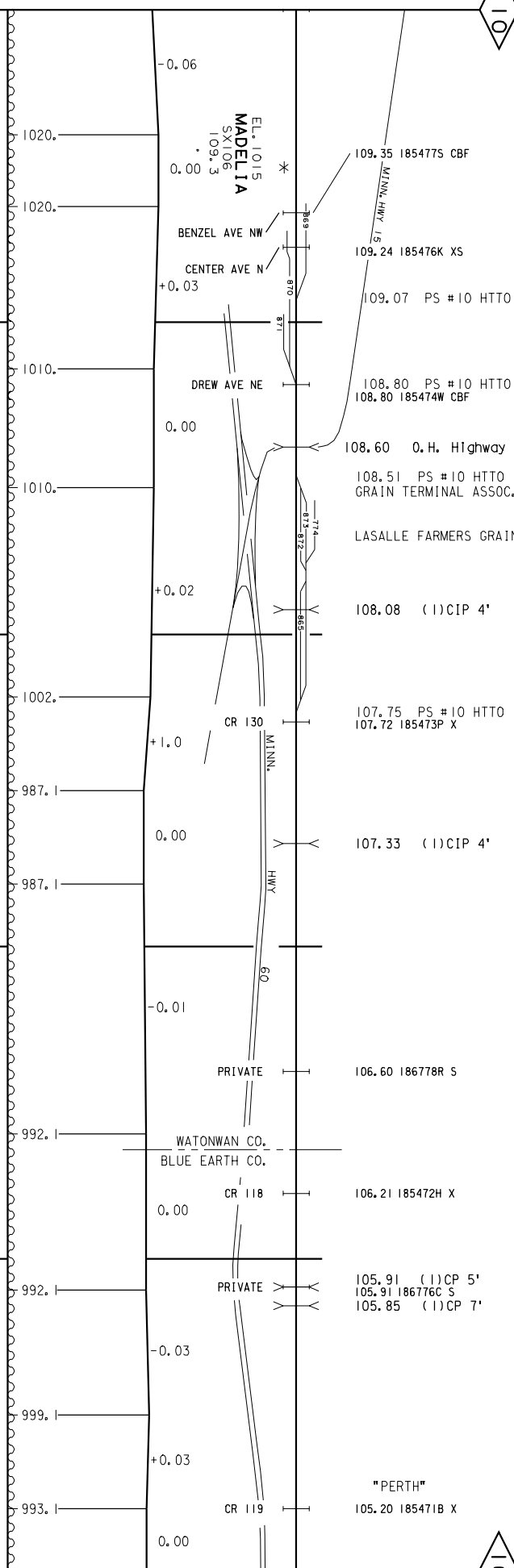
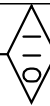
120 LIMITS

115



LAST UPDATED 04/24/2006
 P:\12 twfn cities\pages\mankato sub\02 with added nsp lead\190_02.dgn

* CAN NW RY MERGED INTO UPRR BY ICC FINANCE DOCKET NO. 32133 - EFFECTIVE APRIL 6, 1995
 * ABANDONED MADELLIA TO LEWISVILLE, MN DOC NO. 26846
 9.21 MILES EFFECTIVE 7-31-1973.



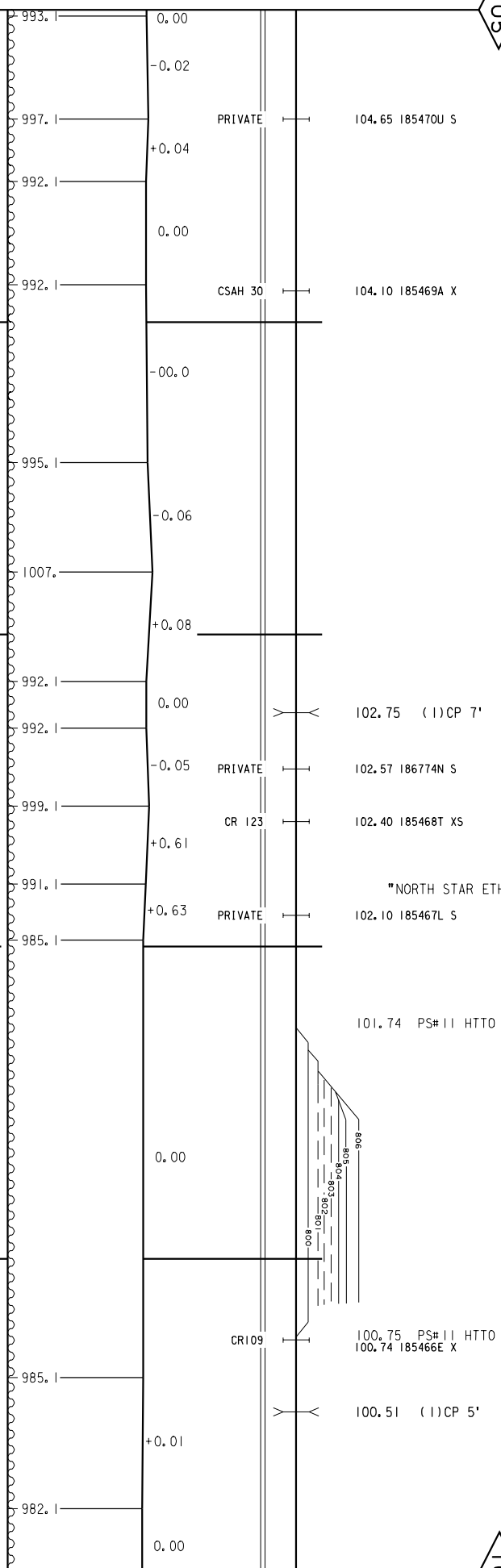
LINE	SURF/	TIES	CURVE	RATL	SINW	SPEED
49		1997	0° 30.07' 12° 30.62' 0-3/4"		SH 115 1998	49
		1997	3° 4.16' 45° 15.86' 4"		SH 115 1998	
		1997	1° 59.93' 65° 20.74' 2-1/4"		SH 115 1998	

CONSTRUCTED BY ST. PAUL AND SIOUX CITY RR - 1870
 CANW RY MERGED INTO UPRR BY ICC FINANCE DOCKET NO. 32133 -EFFECTIVE APRIL 6, 1995

MANKATO SUB

105

100



STATION	ELEVATION	DESCRIPTION
993.1	0.00	
997.1	+0.04	PRIVATE
992.1	0.00	
992.1	-0.00	CSAH 30
995.1	-0.06	
1007.1	+0.08	
992.1	0.00	
992.1	-0.05	PRIVATE
999.1	+0.61	CR 123
991.1	+0.63	PRIVATE
985.1	0.00	
985.1	+0.01	CR 109
982.1	0.00	

1° 1.50' 0-37.4"
 5° 16.00'
 1° 1.80' 1-17.2"

DATE	DESCRIPTION
1997	
2005	

Last Updated: 05/21/2006

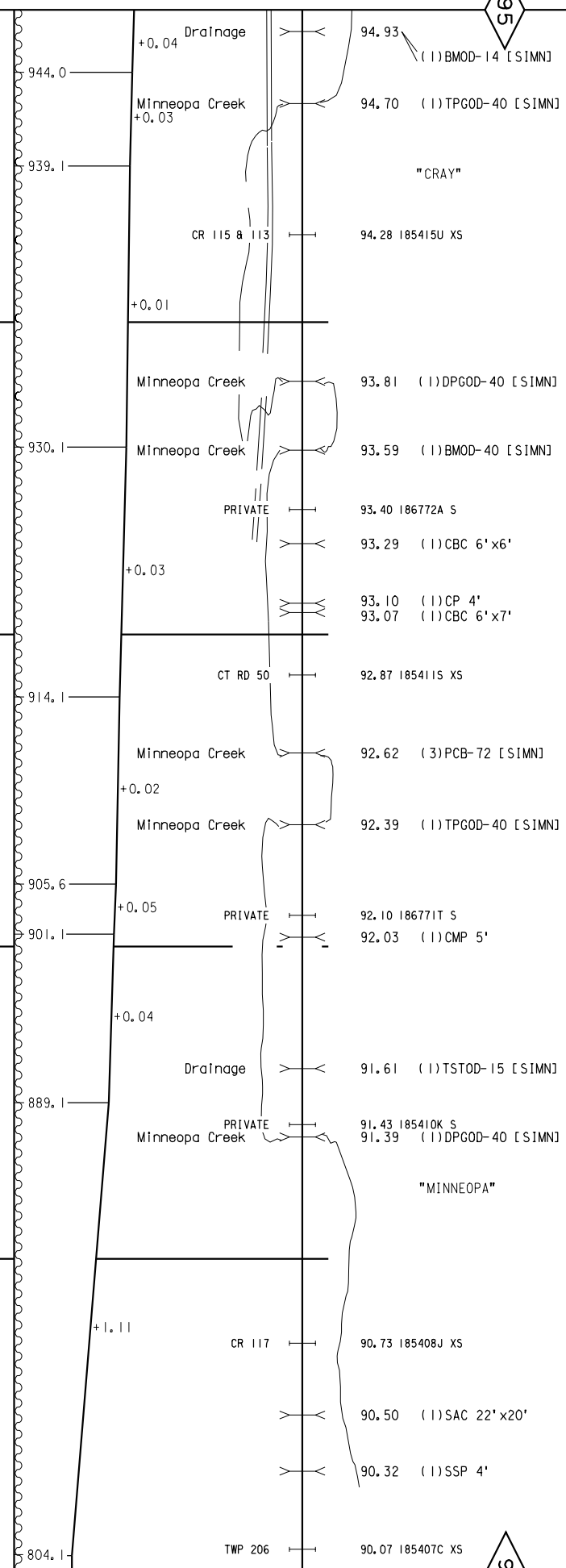
p:\12 twm cities\pages\mankato_sub\02 with added nsp lead\190_05.dgn

MANKATO SUB

CONSTRUCTED BY ST. PAUL AND ST. LOUIS CITY RR - 1869
 CANW RY MERGED INTO UPRR BY ICC FINANCE DOCKET NO. 32133 - EFFECTIVE APRIL 6, 1995
 LINE CHANGE- 1906

95

90



RAIL	CURVE	SPEED	SIMN	TIES	SURF/LINE
SH 115 1993	1° 1.00' 8° 26.00' 1-1/2"		SH 115 1993	1993	1993
SH 115 1980	3° 0.00' 36° 41.00' 2-1/2"	49	SH 115 1980		
SH 115 1998	1° 15.00' 9° 34.00' 1-1/4"		SH 115 1998		
SH 115 1997	1° 45.67' 27° 45.19' 1"		SH 115 1997	1997	1997
SH 1388U 1998	2° 3.00' 26° 12.77' 1-1/4"		SH 1388U 1998		

MANKATO SUB

8

LINE CHANGE-1906

CONSTRUCTED BY ST. PAUL AND SIOUX CITY RAILROAD-1869

LINE CHANGE 1896

* CONSTRUCTED BY ST. PAUL AND SIOUX CITY RAILROAD-1869

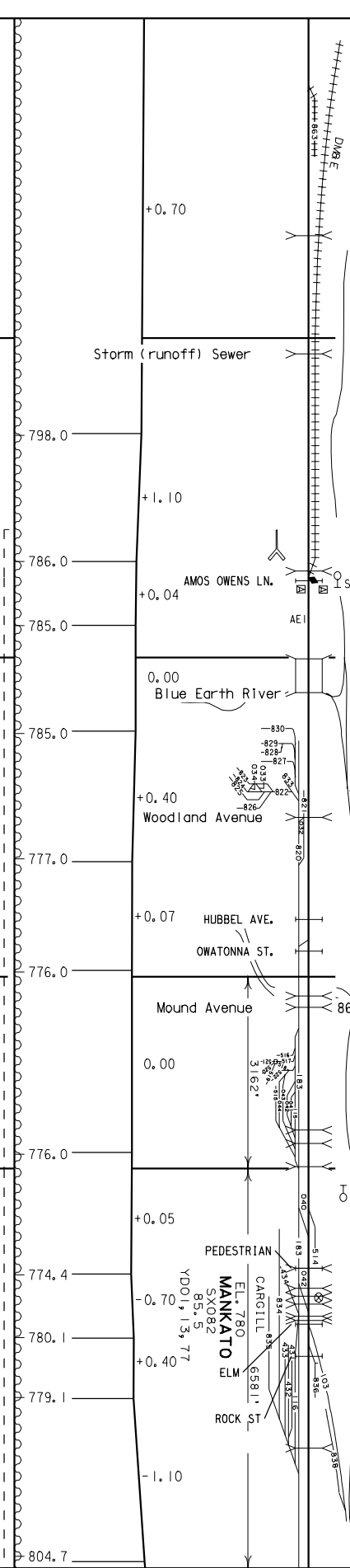
CBNW RY MERGED INTO UPRR BY ICC FINANCE DOCKET NO. 32133 - EFFECTIVE APRIL 6, 1995

* DAKOTA MINNESOTA & EASTERN HAS TRACKAGE RIGHTS PER AGREEMENT 9-3-1986

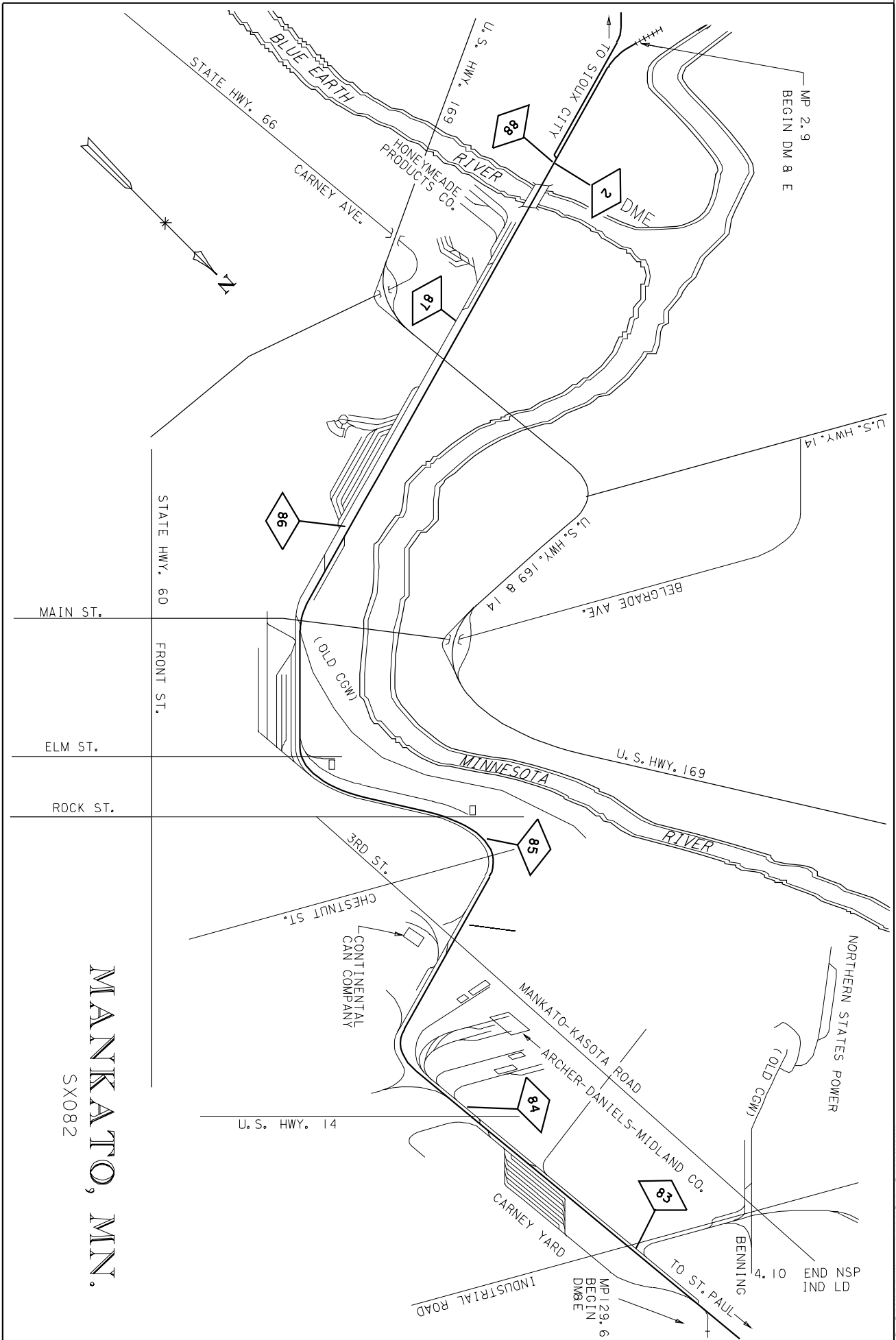
90

85

89.79 PS#10 HTTO
 UPRR OWNS 1 MILE
 89.32 O.H. Highway Bridge
 "SOUTH BEND"
 88.95 (1)PCB-27
 (1)TPG-40
 (2)PCB-42 109' [SIMN]
 88.40 YARD LIMIT
 88.27 (1)CP 7'
 88.24 1869680 BFG
 88.25 PS#15 SPGSW,
 2.01 DM & E
 WEST IND LEAD
 88.22 AEI READER
 87.89 (4)TPG-560 [SIMN]
 87.50 (3)BM-101 [SIMN]
 "HONEYMEAD"
 87.18 193473K XS
 87.12 PS#10 XOVER
 87.08 193472D BFG
 86.90 O.H. Highway Bridge
 86.84 (10)TSTOD-134
 (1)BMOD-36
 (5)TSTOD-58 227' [SIMN]
 86.20 (1)CP 8'
 86.13 (2)CBC 12'x11'
 86.01 (1)CAC 16'x16'
 85.75 O.H. Highway Bridge
 85.75 924110N
 85.75 08009633
 85.69 08009633
 85.62 (1)CBC 6'x4'
 85.62 (1)CBC 6'x4'
 85.62 (1)CBC 6'x4'
 85.61 193462X BFG
 85.53 193463E BFG
 85.30 (1)CBC 8'x8'

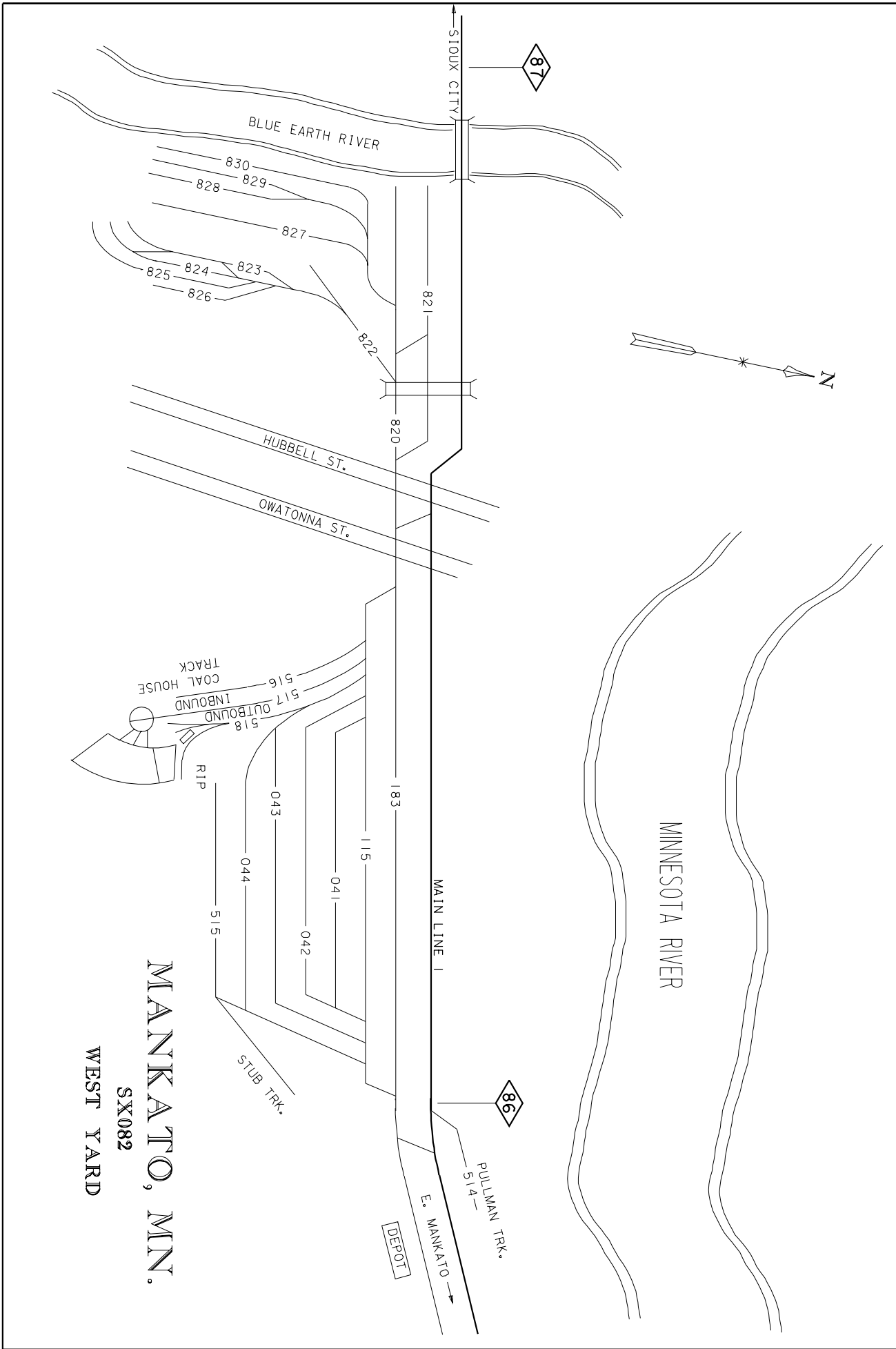


RAIL	CURVE	SPEED	TIES	SURF/LINE
SH 115 938	0°40.00' 1°19.78' 0-3/4"	49	1997	1997
SH 112 942	3°0.17' 21°22.88' 2-1/4"	49	1997	1997
SH 112 944	3°0.12' 23°41.15' 2-13/16"	49	1997	1997
SH 100 987	1°16.32' 6°32.29' 0-3/4"	49	2005	2005
SH 100 987	1°17.64' 6°13/16"	49	2005	2005
SH 136 100	3°0.00' 24°6.50' 1"	49	2005	2005
SH 136 100	5°0.00' 5°27.00' 1-1/2"	49	2005	2005
SH 136 100	4°0.00' 6°21.00' 1"	49	2005	2005
SH 112 935	5°59.00' 95°50.00' 1"	49	2005	2005

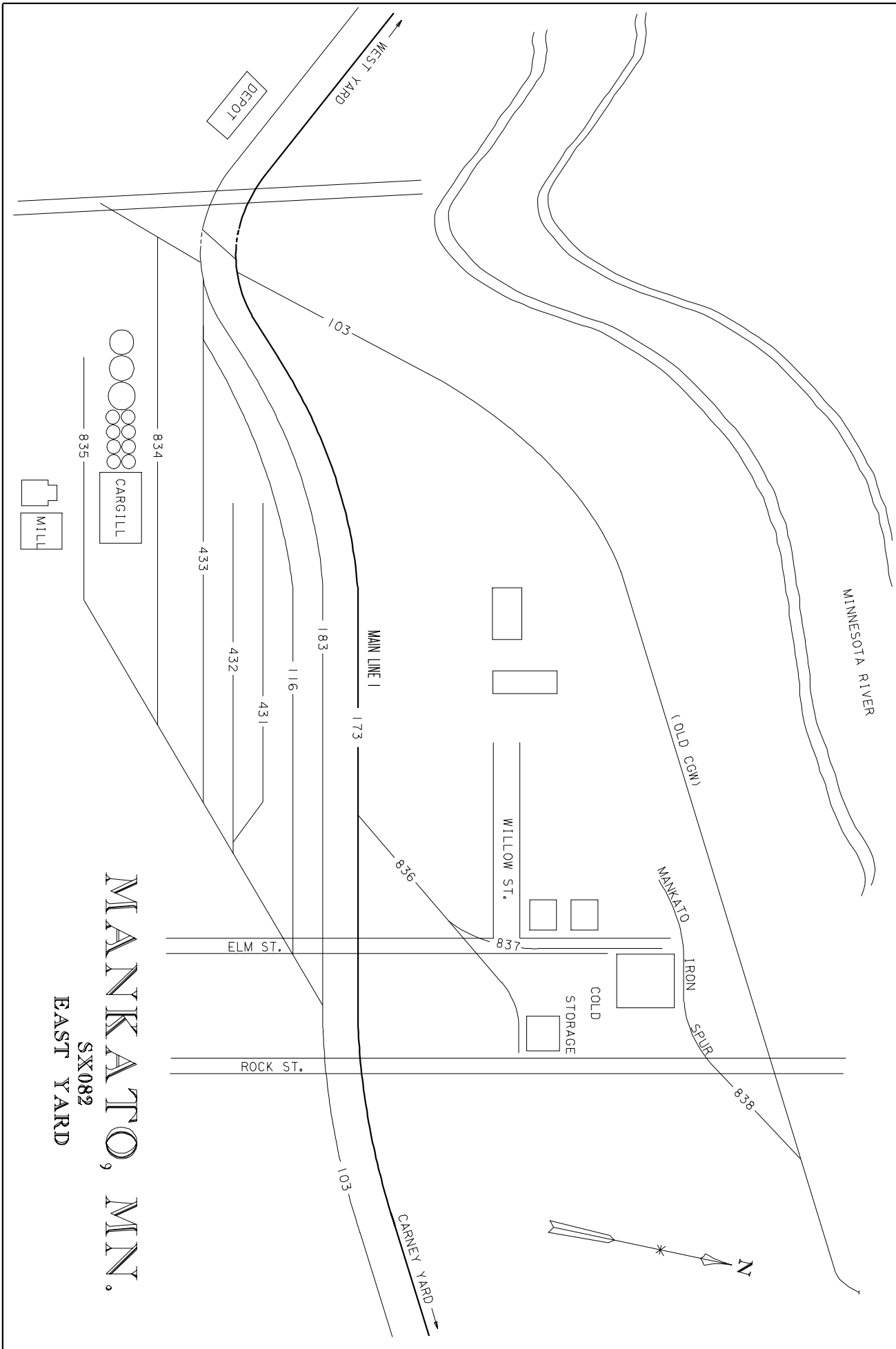


MANKATO, MN.

SX082

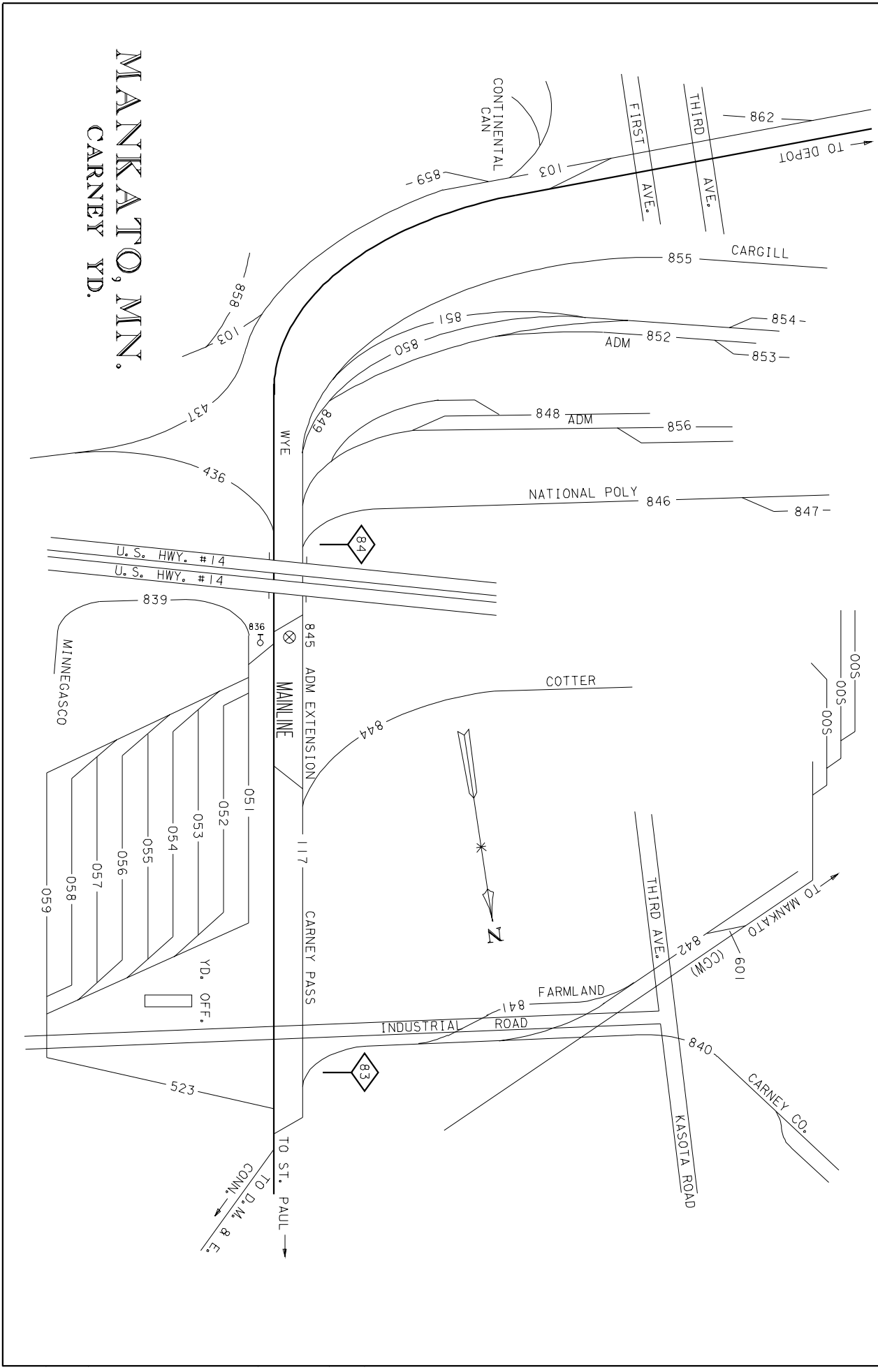


MANKATO, MN.
 SX082
 WEST YARD



MANKATO, MN.
SX082
EAST YARD

MANKATO, MN. CARNBY YD.



CONSTRUCTED BY MINNESOTA VALLEY RR-1868
 LINE CHANGE 1906
 CANW RY MERGED INTO UPRR BY ICC FINANCE DOCKET NO. 32133 - EFFECTIVE APRIL 6, 1995

L.C. - 1906

15

75

70

74.95 (1) CP 7'
 74.88 1853896 BFG
 74.88 (2) CMP 4'

RABBIT RD

M.P. 74.67 EQUATION
 M.P. 73.00

"ST PETER"

72.68 185388A CCFG
 72.57 (2) CMP 4'
 72.55 (1) CP 4'
 72.44 (1) BMOD-24 [SIMN]

Drainage

71.33 (1) TPG0D-70 [SIMN]

Pauls Creek

70.64 (6) TST0D-83 [SIMN]

Tractor Drive

70.53 (9) TST0D-104 [SIMN]

Gravel Road & Creek

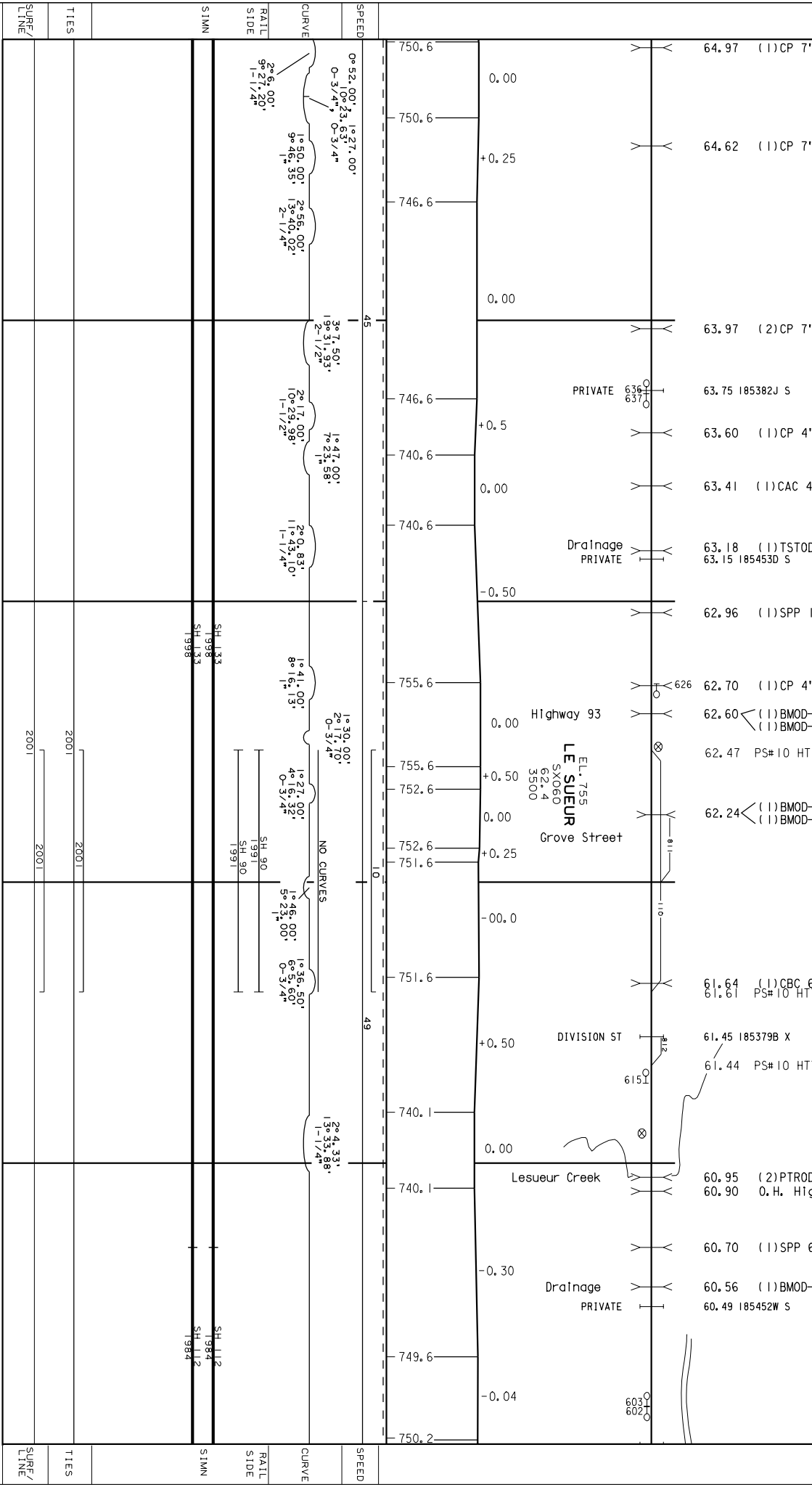
749.1	0.00	749.1	750.6	0.00	0.00	0.00	0.00
30	30	30	30	30	30	30	30
26° 2' 00"	26° 40' 00"	26° 3' 00"	1-1/2°	26° 0' 00"	55° 14' 00"	2-1/4"	2-1/4"
SIMN	SIMN	SIMN	SIMN	SIMN	SIMN	SIMN	SIMN
SH 136 2005	SH 136 2006	SH 136 2005	SH 136 2005	SH 136 2005	SH 136 2005	SH 136 2005	SH 136 2005
TIES	TIES	TIES	TIES	TIES	TIES	TIES	TIES
2005	2006	2005	2005	2005	2005	2005	2005
SURF/ LINE	SURF/ LINE	SURF/ LINE	SURF/ LINE	SURF/ LINE	SURF/ LINE	SURF/ LINE	SURF/ LINE
2006	2006	2006	2006	2006	2006	2006	2006

CONSTRUCTED BY MINNESOTA VALLEY RR-1868
 CANW RY MERGED INTO UPRR BY ICC FINANCE DOCKET NO. 32133-EFFECTIVE APRIL 6, 1995
 CONSTRUCTED BY MINNESOTA VALLEY RR-1867
 LINE CHANGE-1899

MANKATO SUB

65

60



SURF/LINE	TIES	SURF/LINE
	2001	2001
	2001	2001
	2001	2001

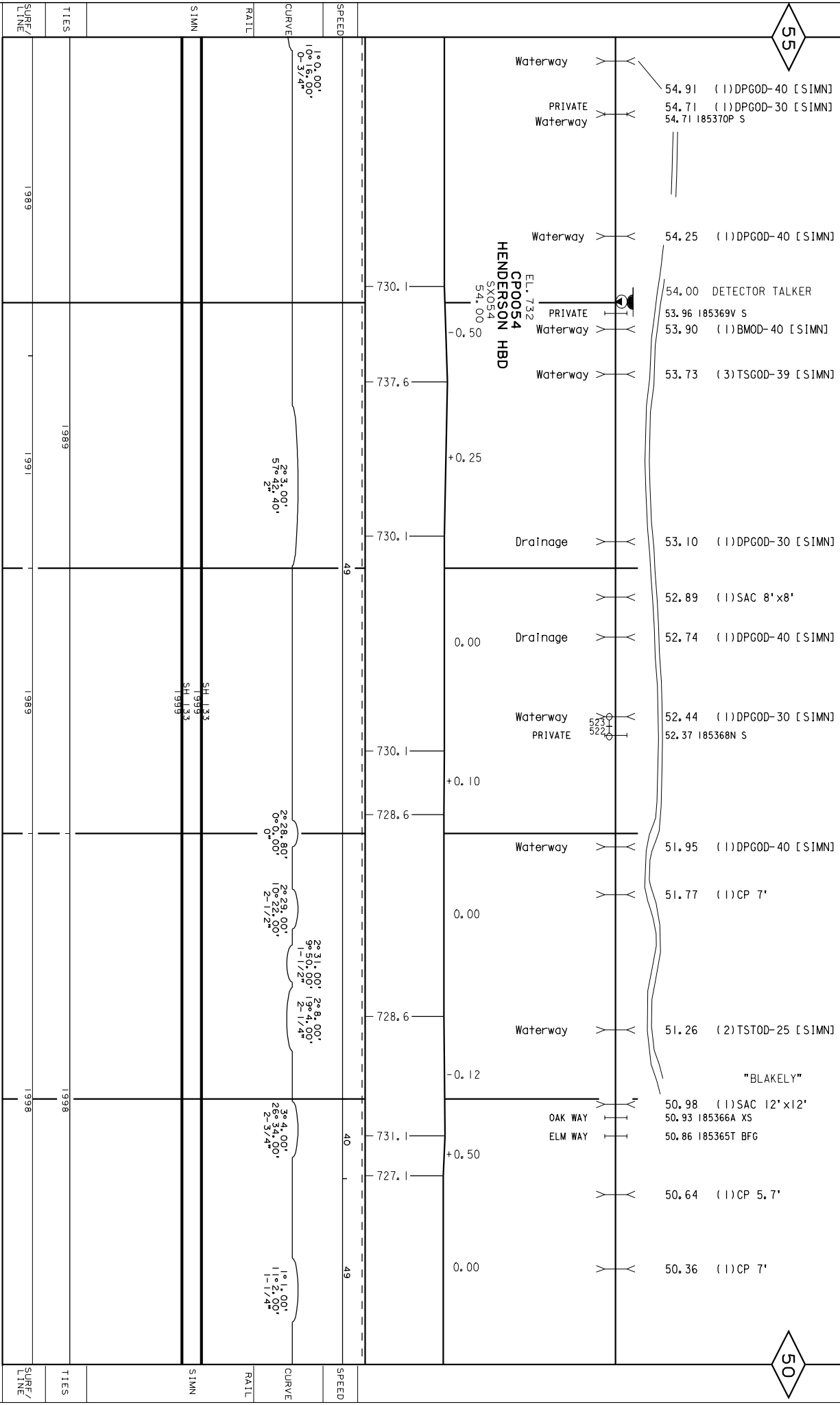
LAST UPDATED 01/15/2007
 P1V2 twin cities\dages\mankato sub\02 with added nsp lead\B01.Dgn

LINE CHANGE-1906

CONSTRUCTED BY MINNESOTA VALLEY RR-1867
CANW RY MERGED INTO UPRR BY ICC FINANCE DOCKET NO. 32133-EFFECTIVE APRIL 6, 1995
LINE CHANGE-1902

55

50



SURF/LINE	TIES	SURF/LINE	TIES
1989	1989	1989	1989
1991	1991	1989	1998
1989	1989	1998	1998

Last Updated: 01/15/2007

p:\12 twin cities\pages\mankato sub\02 with added nsp lead\B0_19.dgn

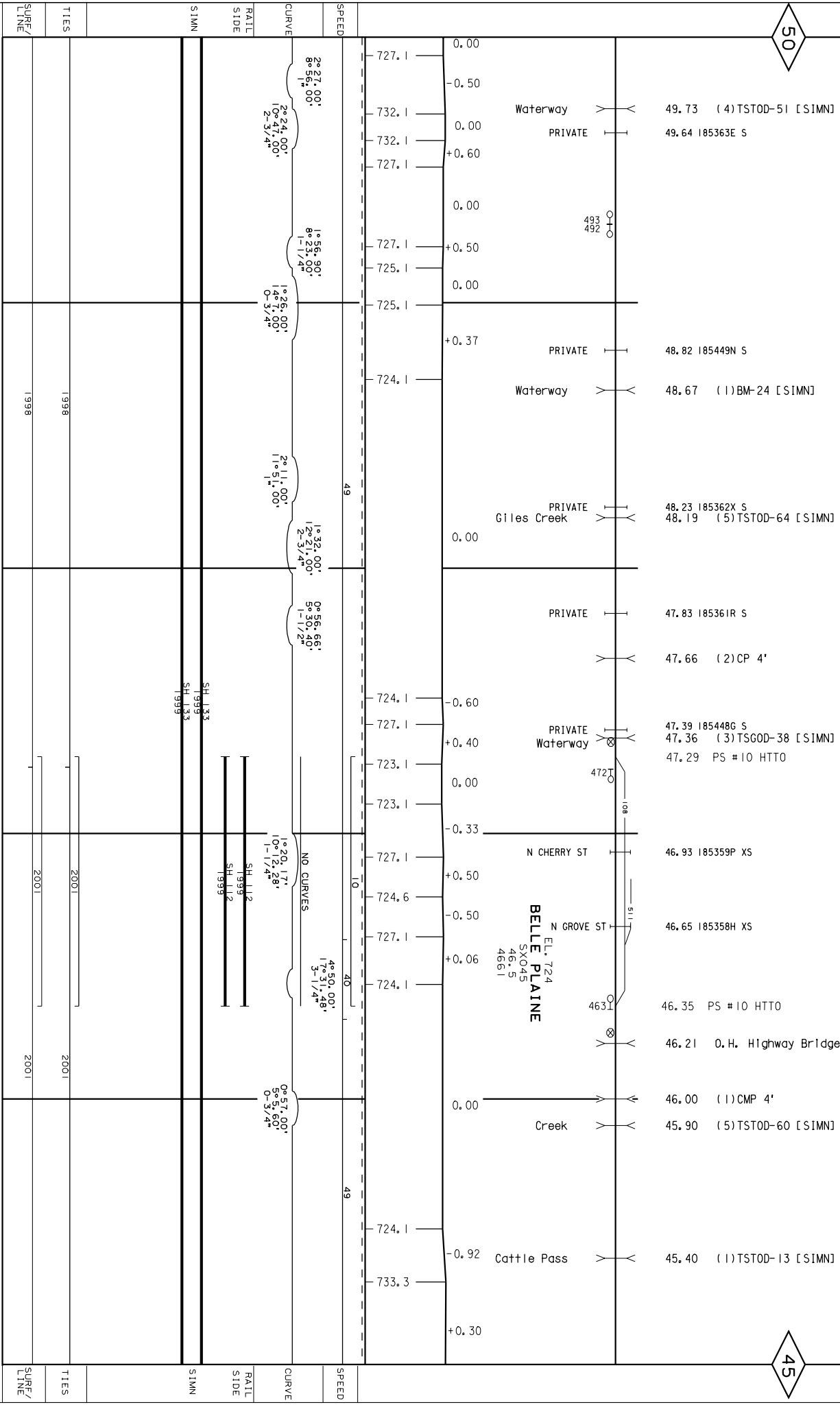
CONSTRUCTED BY MINNESOTA VALLEY RR-1867
 GRANW RY MERGED INTO UPRR BY ICC FINANCE DOCKET NO. 32133 - EFFECTIVE APRIL 6, 1995
 CONSTRUCTED BY MINNESOTA VALLEY RR-1866

MANKATO SUB

20

50

45

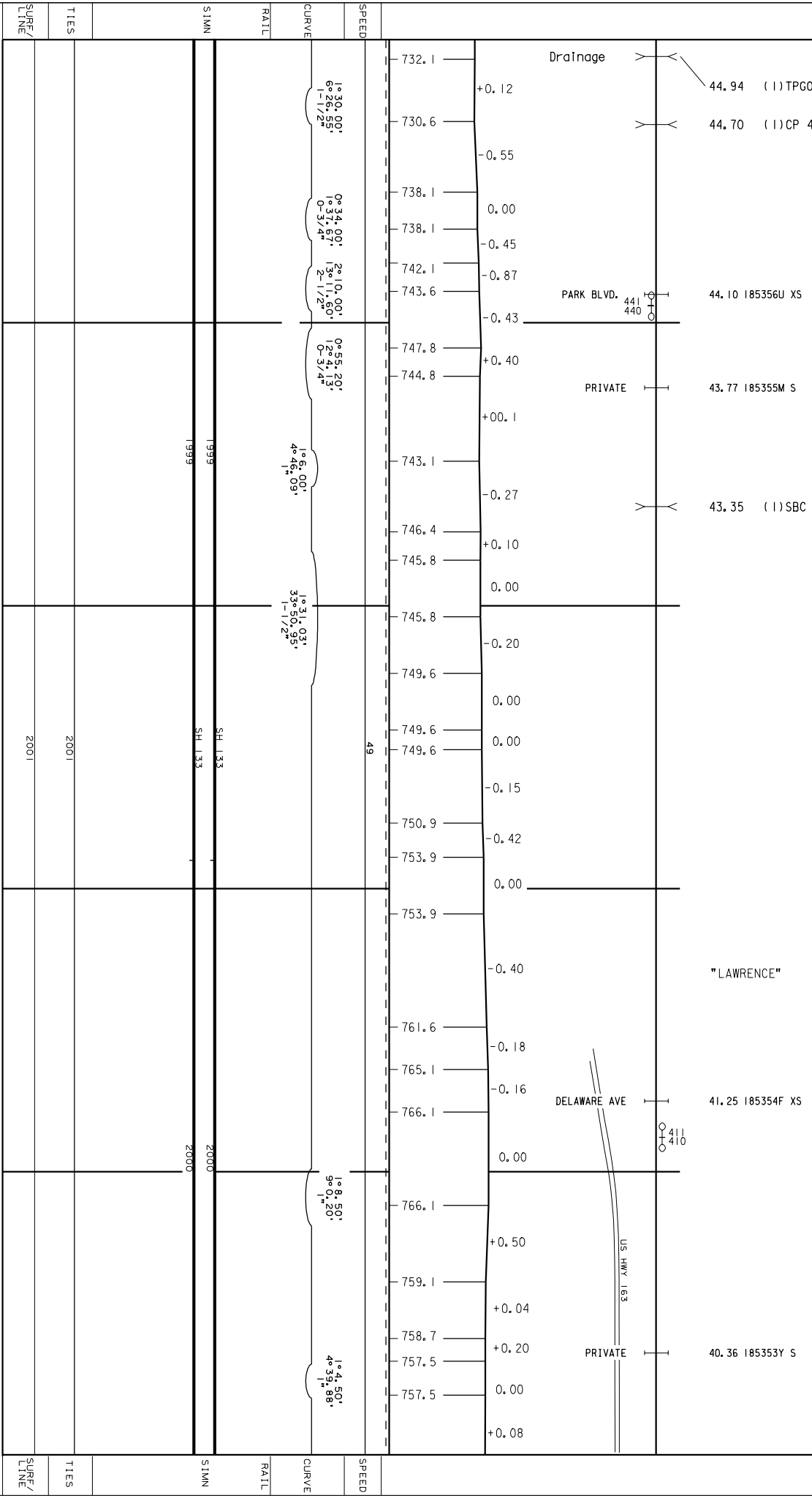


Last Updated: 01/15/2007
 p:\12 twm gthes\papes\mankato sub.v02 with added nap lead\190_20.dgn

CONSTRUCTED BY MINNESOTA VALLEY RR- 1866
 CRNW RY MERGED INTO UPRR BY ICC FINANCE DOCKET NO. 32133 - EFFECTIVE APRIL 6, 1995

45

40

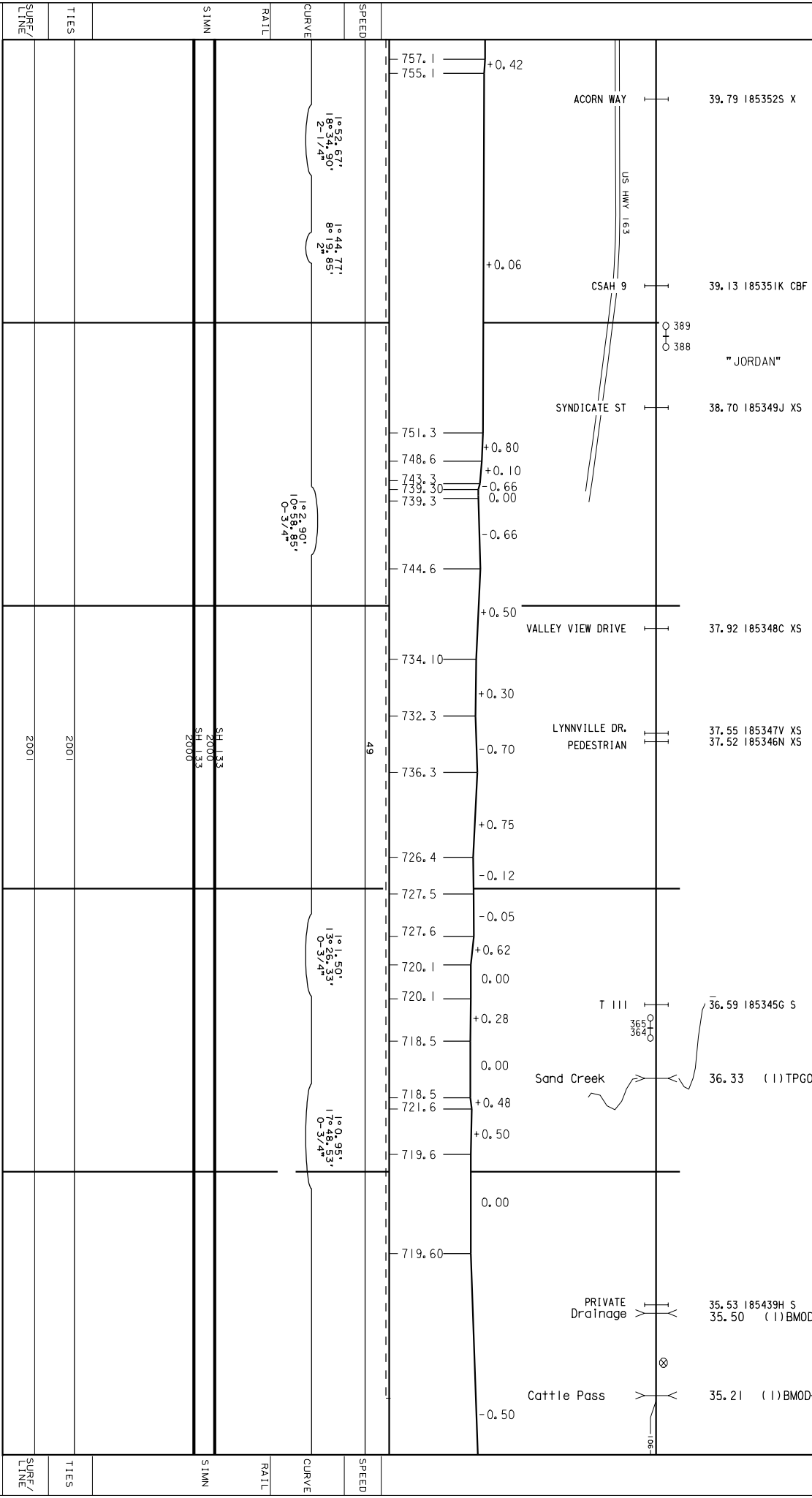


SURF/LINE	TIES	SIMN	RATL	CURVE	SPEED
2001	2001	1999	SH 1.33	1° 30.00' 6° 26.55' 1-1/2"	49
2001	2001	1999	SH 1.33	0° 34.00' 1° 37.67' 0-3/4"	49
2001	2001	1999	SH 1.33	2° 10.00' 3° 11.60' 2-1/2"	49
2001	2001	1999	SH 1.33	0° 56.20' 1° 26.47' 0-3/4"	49
2001	2001	1999	SH 1.33	1° 06.00' 4° 46.09' 1-1/2"	49
2001	2001	1999	SH 1.33	1° 31.03' 3° 50.95' 1-1/2"	49
2001	2001	2000	SH 1.33	1° 8.50' 9° 0.20' 1"	49
2001	2001	2000	SH 1.33	1° 4.50' 4° 39.88' 1"	49

CONSTRUCTED BY MINNESOTA VALLEY RR-1866
 GRANW RY MERGED INTO UPRR BY ICC FINANCE DOCKET NO. 32133 - EFFECTIVE APRIL 6, 1995

40

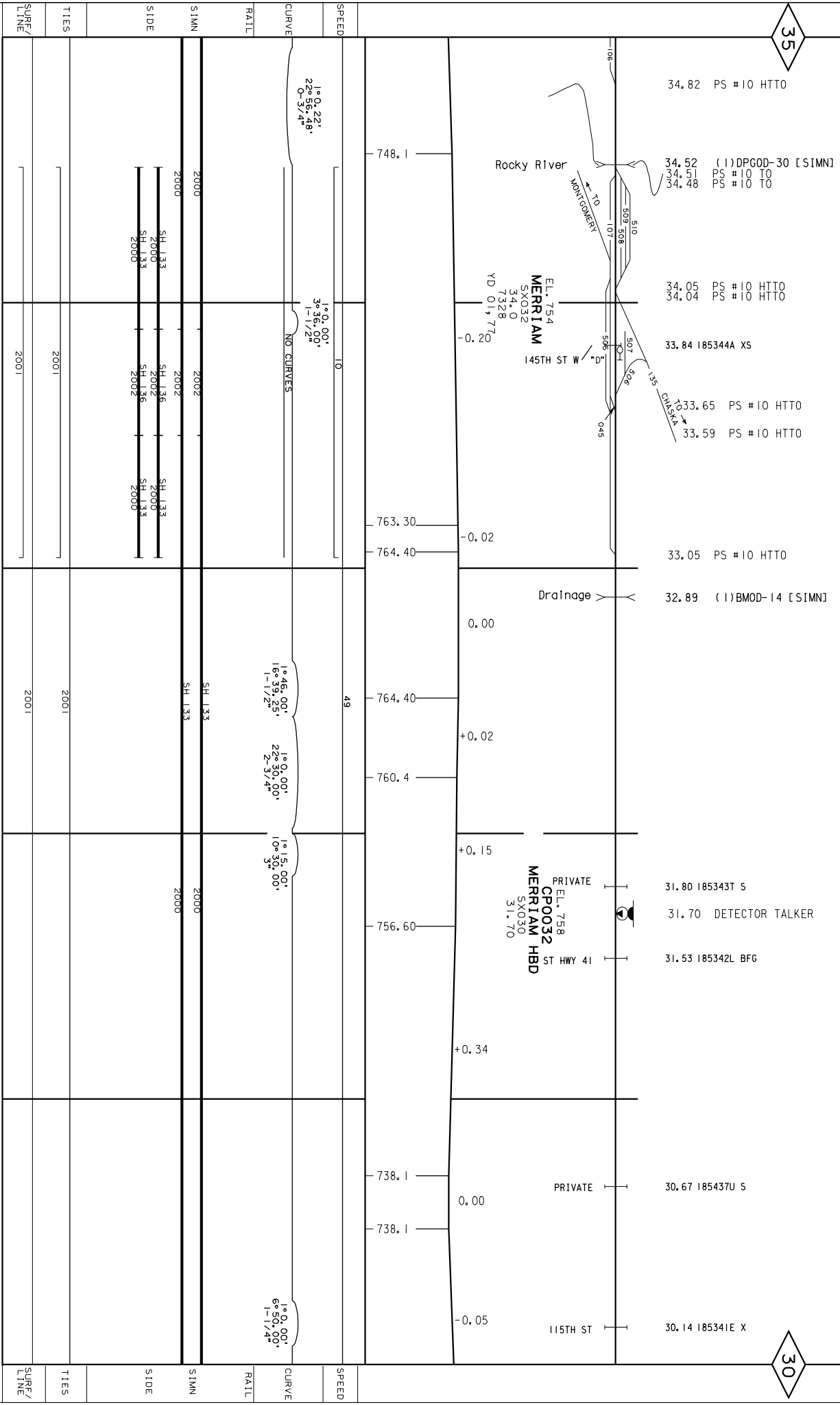
35



CONSTRUCTED BY MINNESOTA VALLEY RR-1866
 CRANW RY MERGED INTO UPRR BY ICC FINANCE DOCKET NO. 32133 - EFFECTIVE APRIL 6, 1995

35

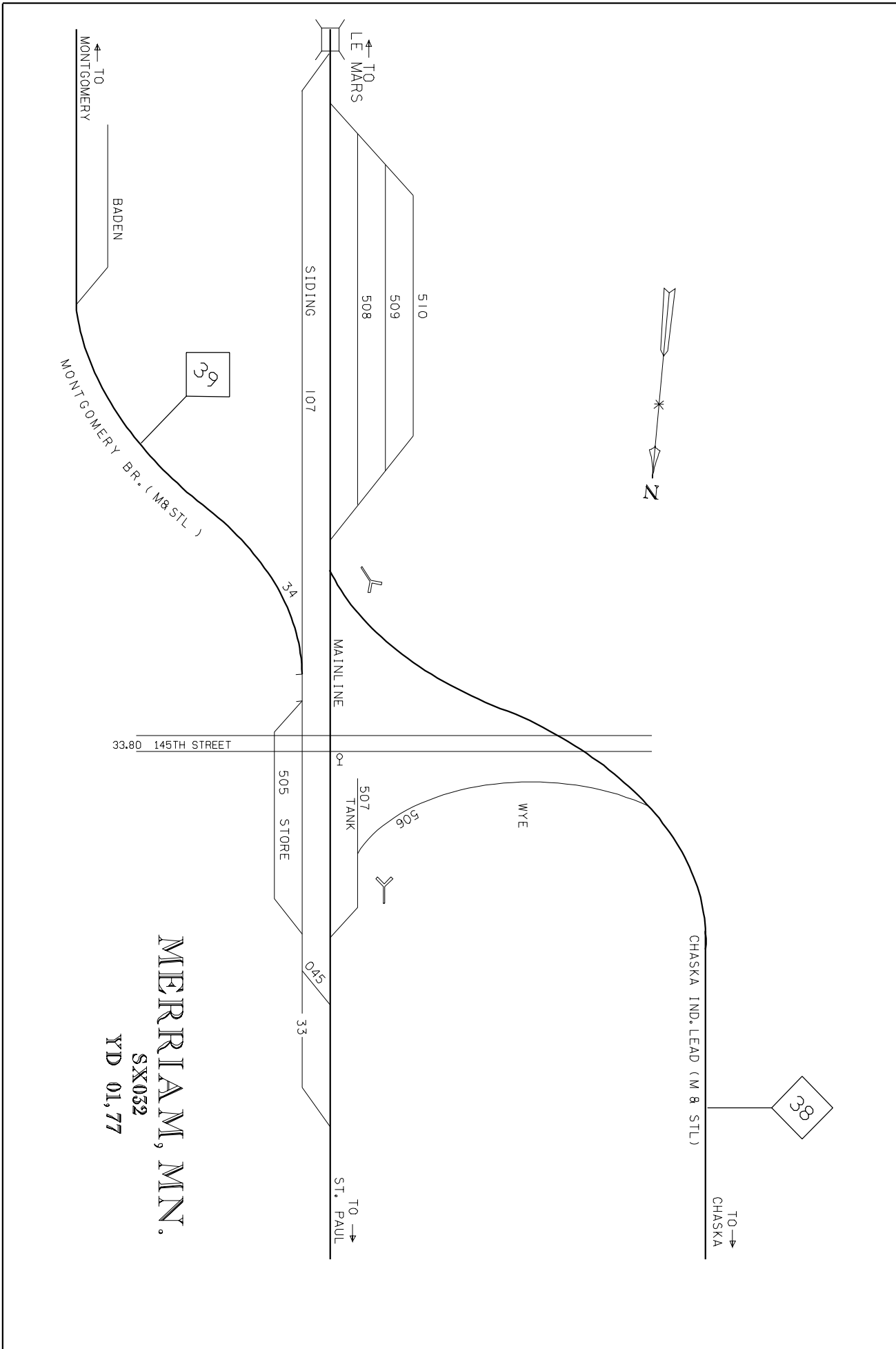
30



STATION	CURVE	SPEED	RAIL	SIDE	TIES	SURF/LINE
748.1	1°0.22' 22°56'48" 0-3/4"	10				
763.30	NO CURVES					
764.40						
764.40	1°46.00' 16°39.25' 1-1/2"	49				
760.4	19°0.00' 22°30.00" 2-3/4"					
756.60	19°15.00' 10°30.00" 3"					
738.1						
738.1						
738.1	1°0.00' 6°50.00" 1-1/4"					

Last Updated: 01/20/2006

p:\12 twin cities\pages\mankato sub\02 with added nsp lead\90.23.dgn



MERRIAM, MN.

SX032

YD 01,77

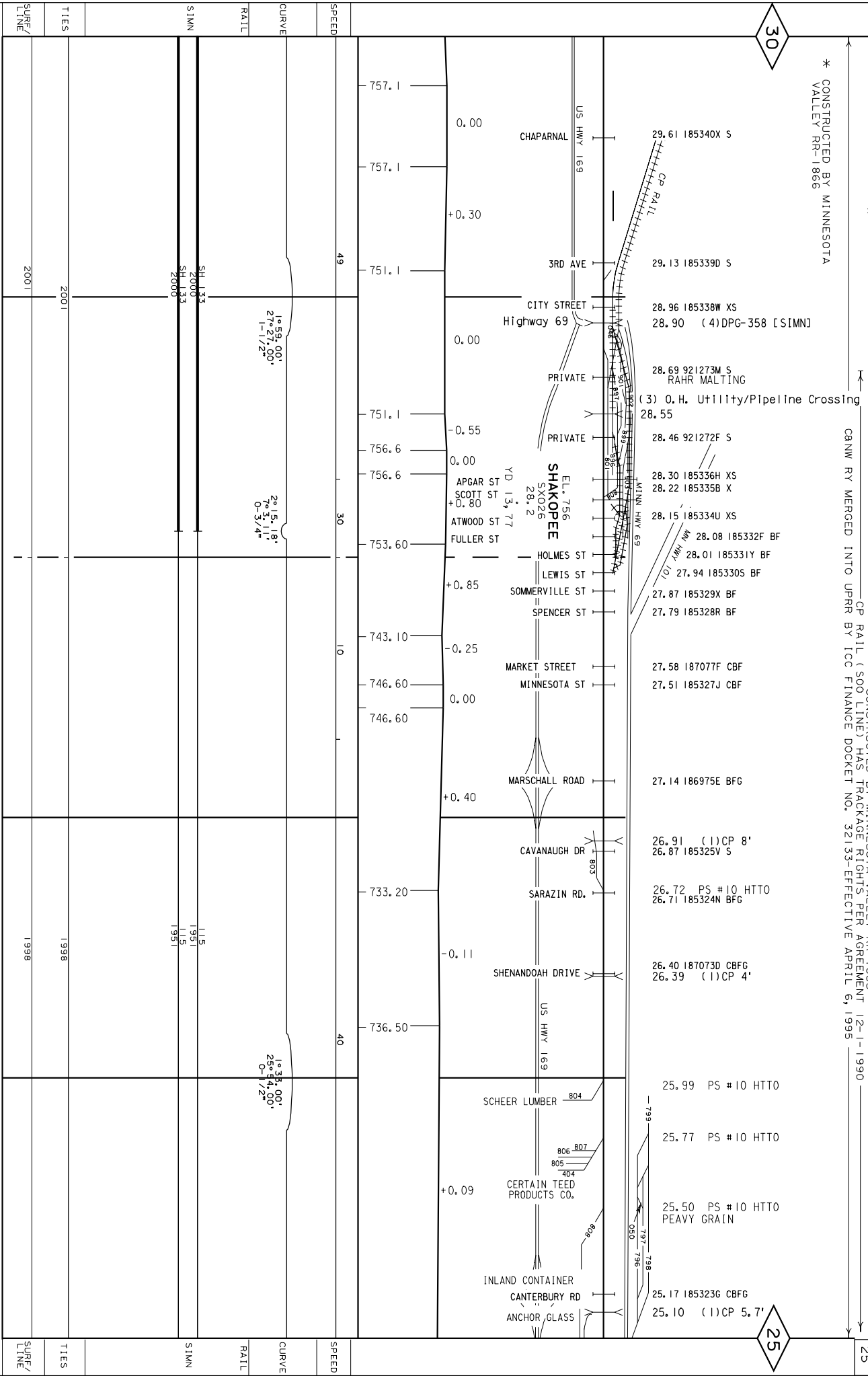
* CONSTRUCTED BY MINNESOTA VALLEY RR-1866

CP RAIL (SOD LINE) HAS TRACKAGE RIGHTS PER AGREEMENT 12-1-1990
 C&NW RY MERGED INTO UPRR BY ICC FINANCE DOCKET NO. 92133-EFFECTIVE APRIL 6, 1995

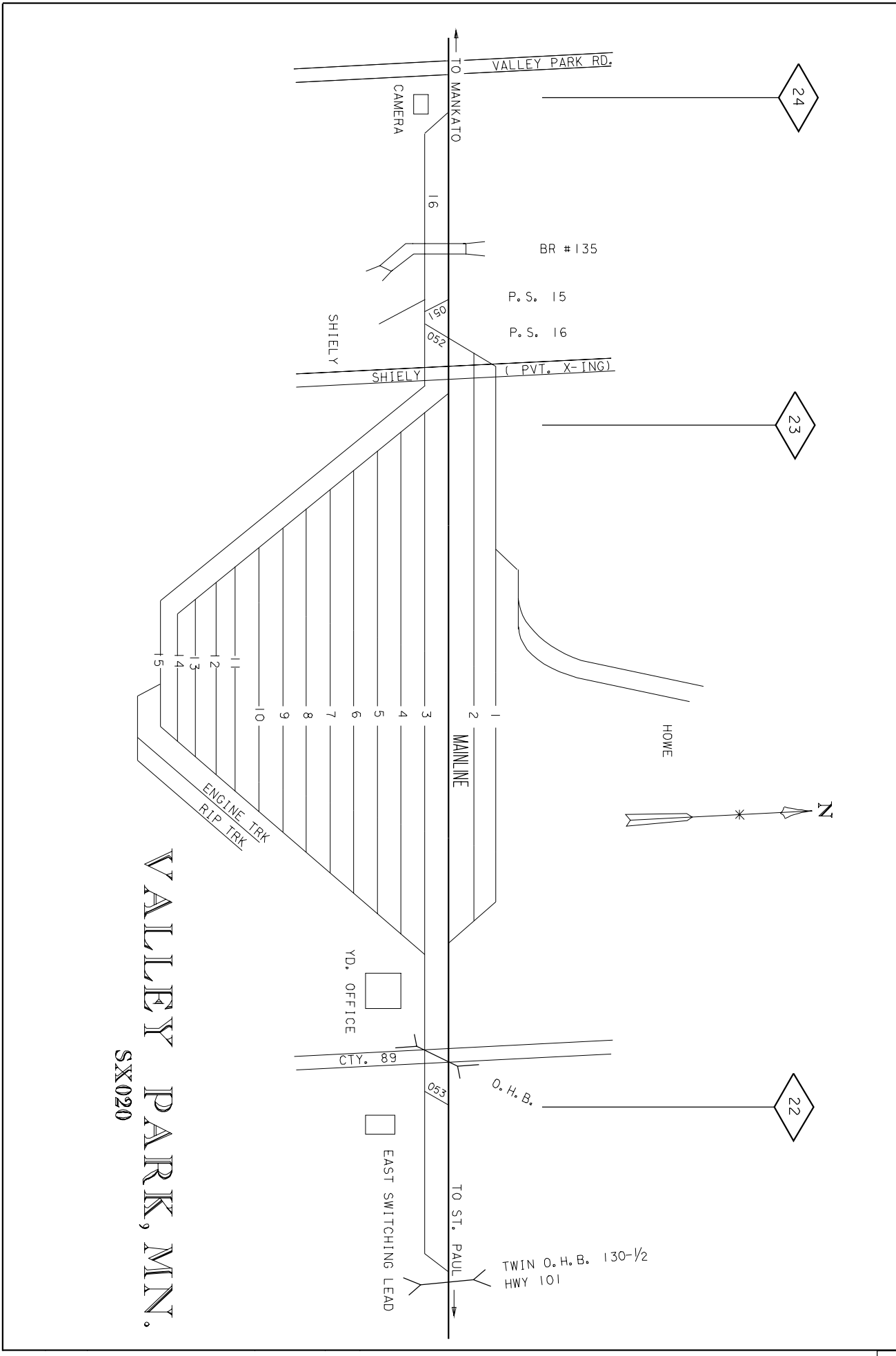
MANKATO SUB

30

25



Last Updgetech 08/27/2006
 p:\12 twin cities\p000es\mankato sub\02 with added nsp lead\190_25.dgn



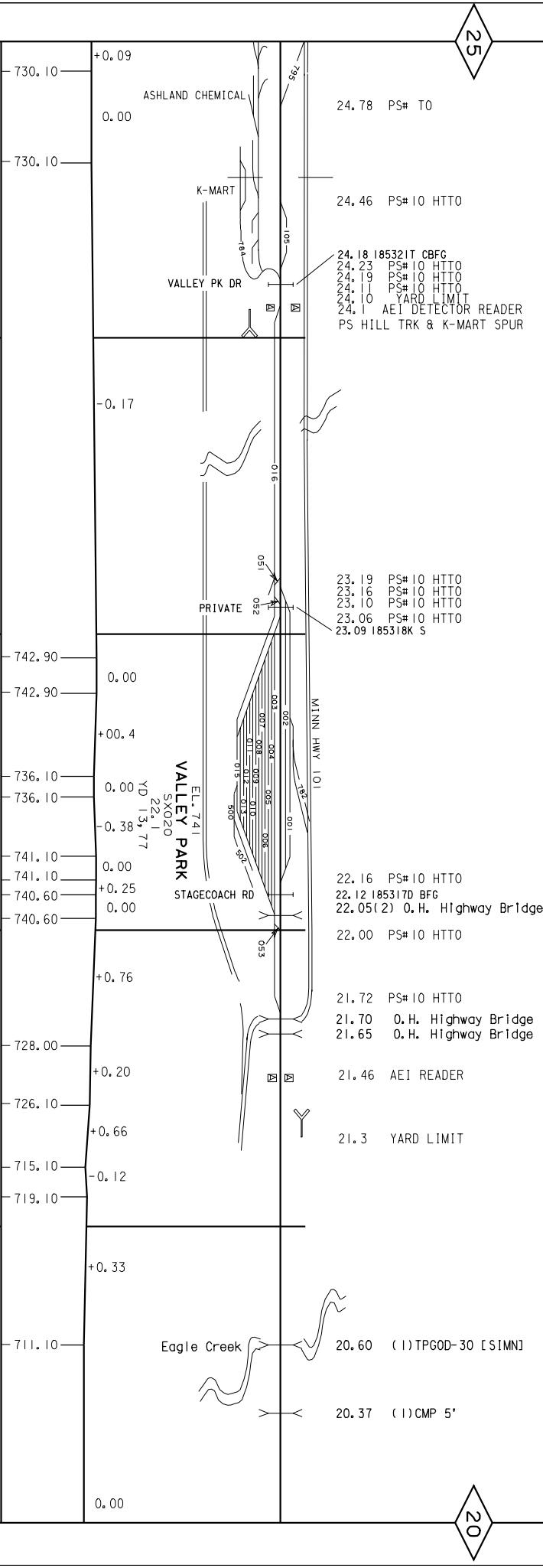
VALLEY PARK, MN.

SX020

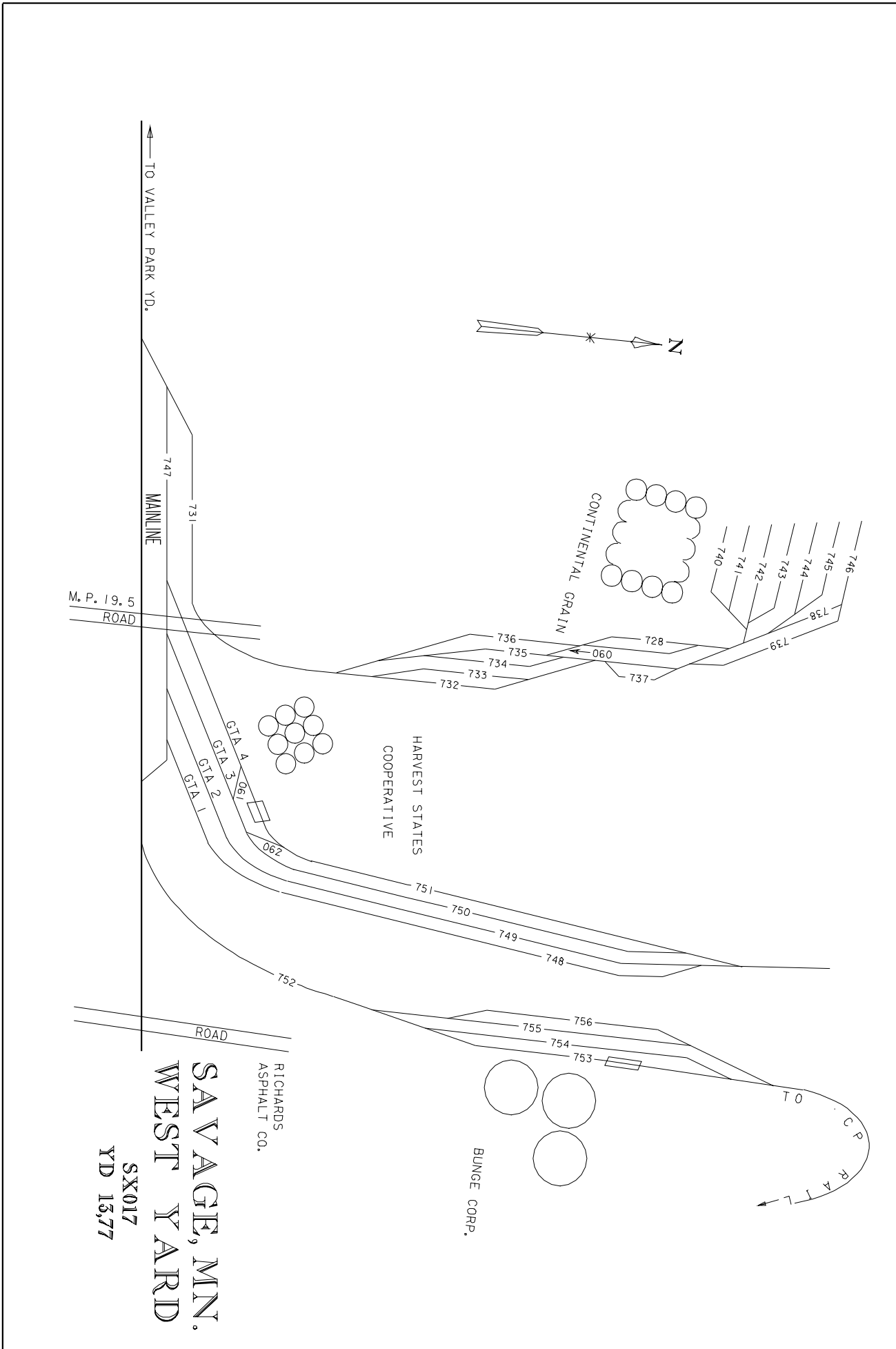
CONSTRUCTED BY MINNESOTA VALLEY RR-1865
 CP RAIL (SOO LINE) HAS TRACKAGE RIGHTS PER AGREEMENT 12-1-1990
 CRNW RY MERGED INTO UPRR BY ICC FINANCE DOCKET NO. 321133-EFFECTIVE APRIL 6, 1995

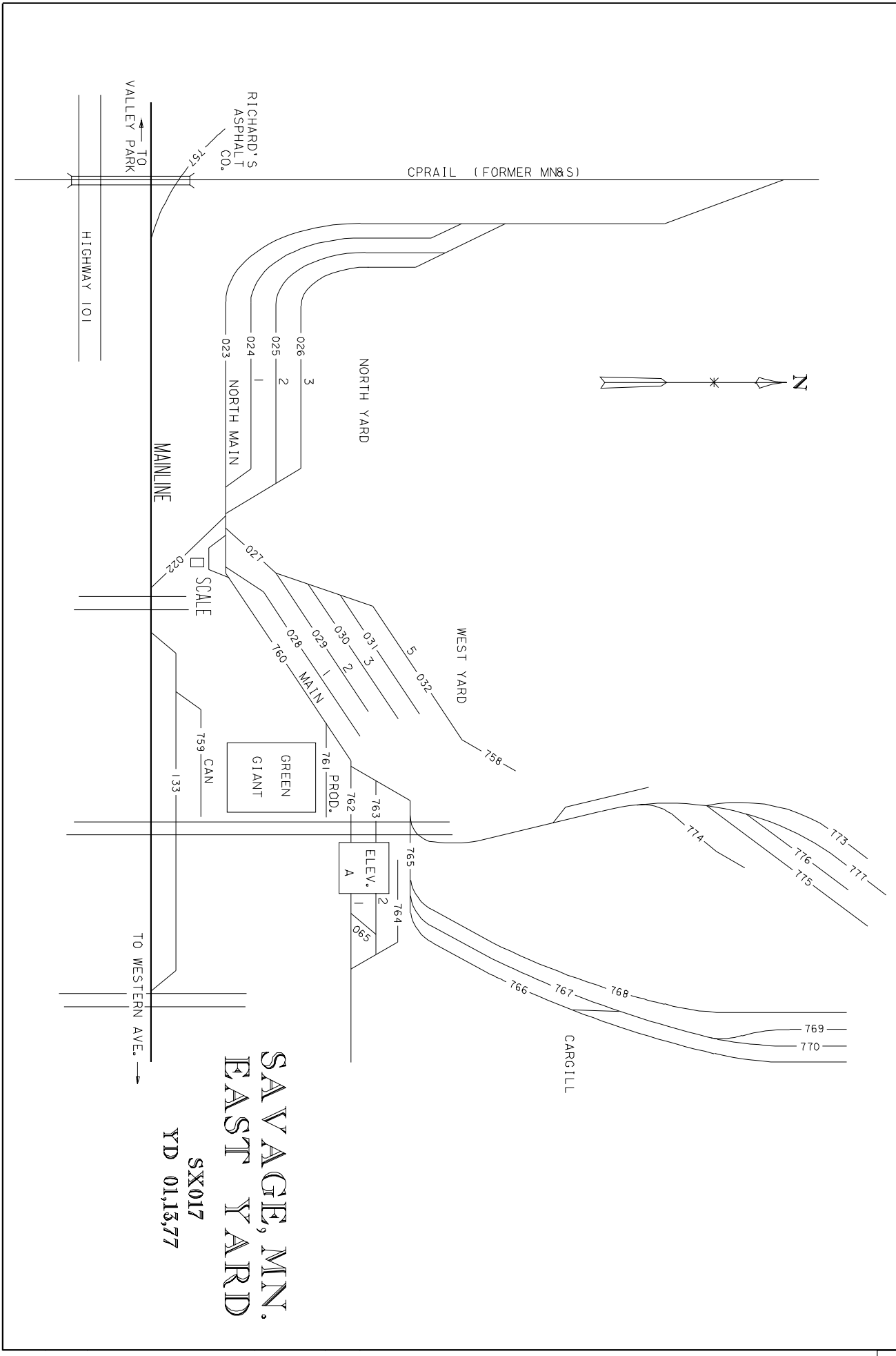
25

20



SURF/LINE	TIES	SIMN	RAIL	CURVE	SPEED
1998	1998	115 195 115 195		1° 32.00' 110.55.00' 1-11/2°	40
		115 195 115 195		1° 32.00' 110.55.00' 1-11/2°	

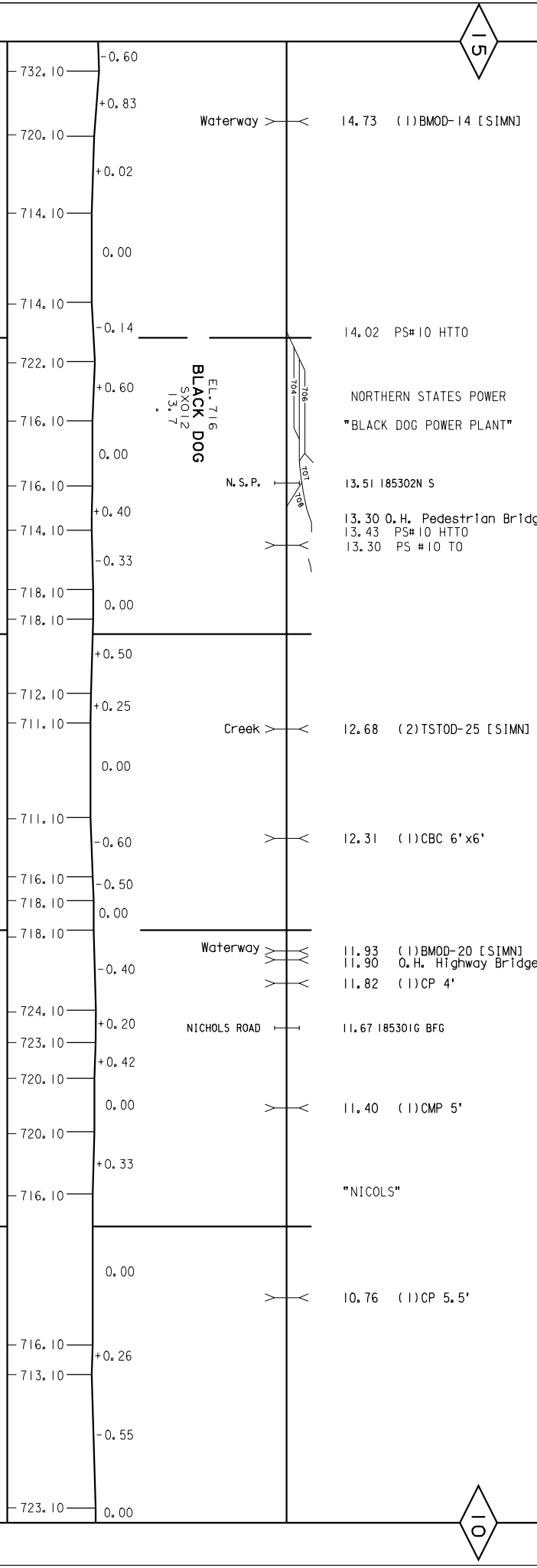
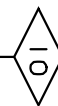
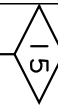




**SAVAGE, MN.
EAST YARD**

**SX017
YD 01,13,77**

CONSTRUCTED BY MINNESOTA VALLEY RR-1865
 CP RAIL (SOO LINE) HAS TRACKAGE RIGHTS PER AGREEMENT 12-1-1990
 C&NW RY MERGED INTO UPRR BY ICC FINANCE DOCKET NO. 32133 - EFFECTIVE APRIL 6, 1995



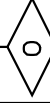
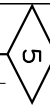
SURF/LINE	TIES	S1MN	CURVE	RAIL	SPEED
1938	1938	115 1985	1°54.00' 7°26.00' 1-1/2"		40
1938	1938	115 1985	1°00.00' 7°48.00' 0-3/4"		40
1939	1986		1°00.00' 5°06.00' 1"		40
1997	1997		1°00.00' 10°00.00'		40

*** CP RAIL (SOO LINE) HAS TRACKAGE RIGHTS PER AGREEMENT 12-1-1990

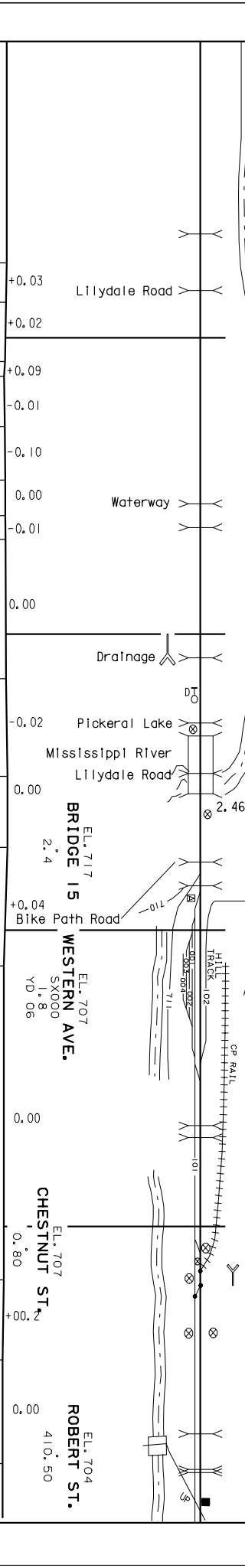
CONSTRUCTED BY MINNESOTA VALLEY RAILROAD- 1865
JOINTLY OWNED WITH CP RAIL (SOO LINE) PER AGREEMENT 9-11-1888 (MAO BY UP)

M/O BY CPRS
JOINTLY OWNED BY UP/CPRS/BNSF
(M/O BY UP)

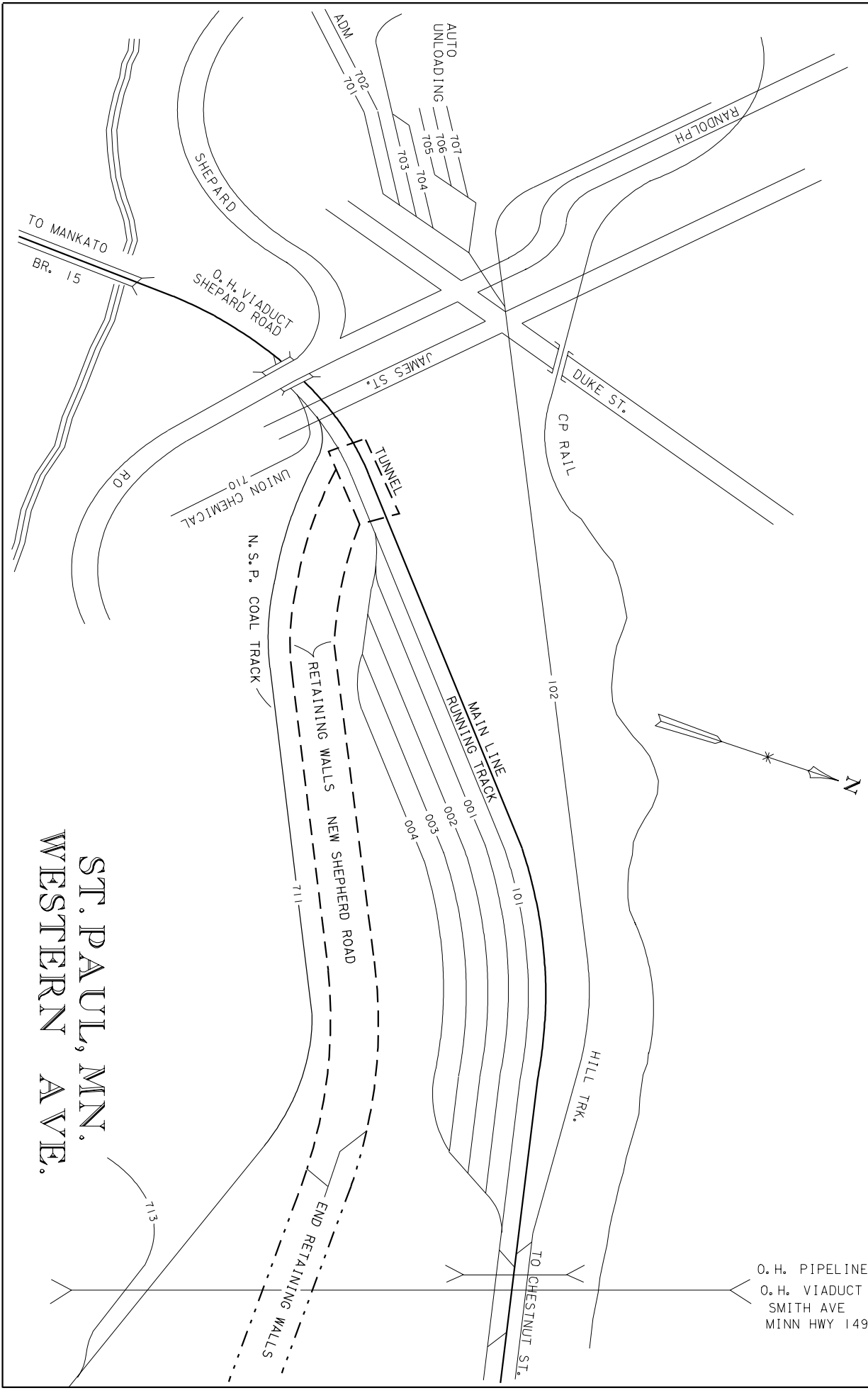
UNION DEPOT



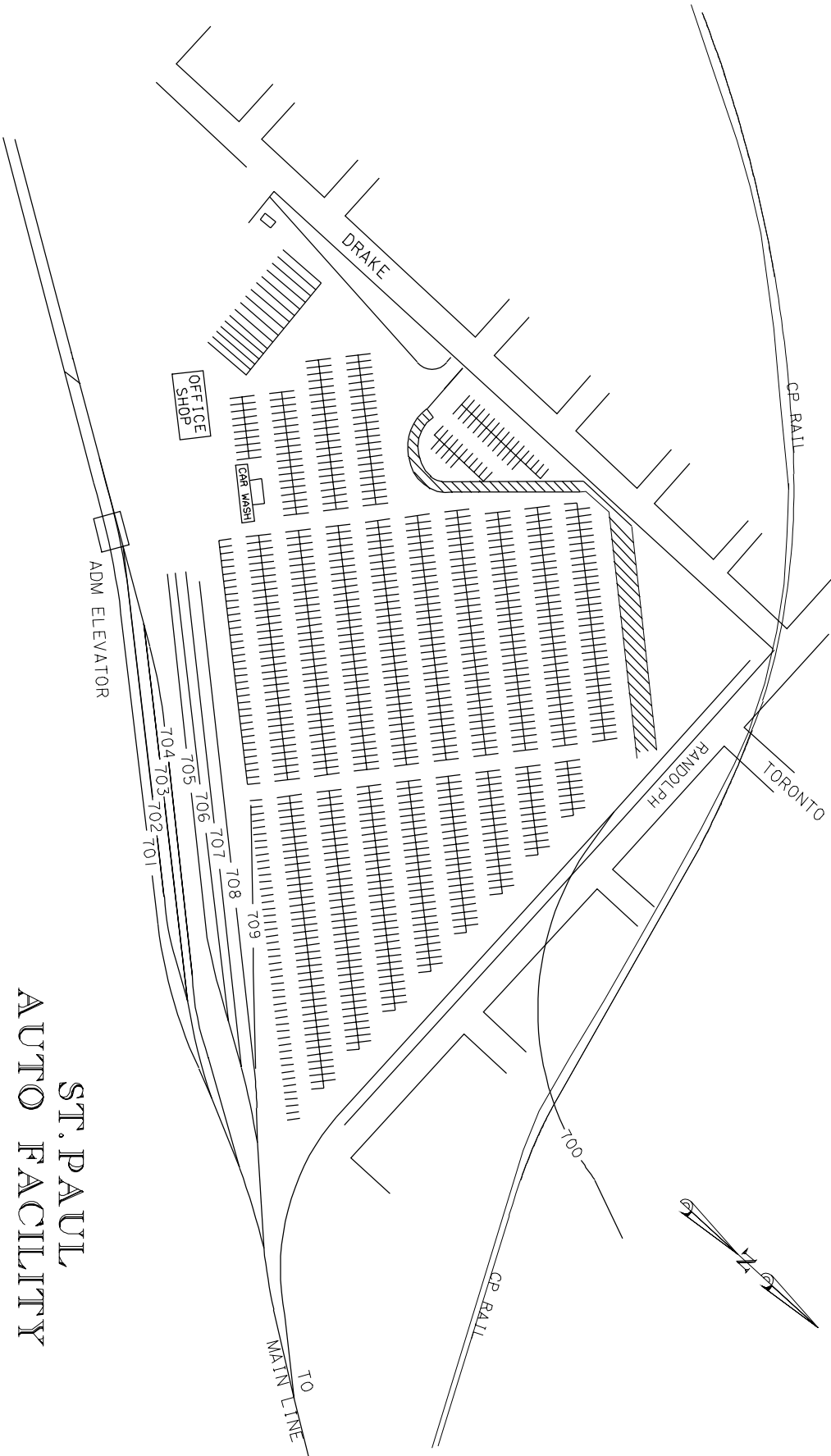
- 4.35 (2) O.H. Highway Bridge
- 4.16 (8) TSTOD-109 [SIMN]
"CLIFF"
- 3.44 (4) TSGOD-51 [SIMN]
- 3.36 (1) CP 5'
- 3.00 YARD LIMIT
- 2.92 (1) TSTOD-11 [SIMN]
- 2.70 (8) TSTOD-101 [SIMN]
- 2.53 (2) TSGOD-25
(1) BMOD-26
(2) TSTOD-26 } 76' [SIMN]
- 2.46 (9) DPGOD-720
(1) TTROD-M/S-260 } 1035' [SIMN]
(1) DPGOD-55
- 2.23 (1) BM-36 [SIMN]
- 2.19 PS# 10 HTTO
- 2.15 O.H. Highway Bridge
- 2.13 PS# 10 HTTO
- 2.12 READER DETECTOR
- 1.60 "DRAKE ST."
P.S. HILL TRACK
- 1.55 PS# 10 HTTO
- 1.49 PS# 10 HTTO
- 1.34 O.H. Highway Bridge
- 1.30 O.H. Highway Bridge
- 0.91 PS# 10 HTTO
- 0.89 PS# 10 HTTO
- 0.80 PS# 10 HTTO
- 0.80 YARD LIMIT
- 0.30 O.H. Highway Bridge
- 0.18 (1) CP 4'
- 0.17 O.H. Highway Bridge



SPEED	CURVE	RAIL	SIMN	TIES	SURF/ LINE
30	0°22.62' 5°48.00' 0-1/4" 0°22.62' 0°30.00' 0-1/2" 0°51.75' 2°57.00' 1-1/2" 0°51.00' 3°21.00' 1-1/2" 1°30.00' 6°21.00' 2-3/4" 1°0.00' 7°6.00' 0-1/4"	SH 112 1986 SH 112 1986 SH 100 1984 SH 100 1984 SH 133 1993 SH 133 1993 SH 115 1986 SH 133 1993 SH 133 1993 SH 100 1984 SH 100 1984	1997	1997	1997
20	1°29.94' 15°34.48' 0-5/8" 1°12.60' 19°25.23' 0-15/16" 1°32.10' 13°14.83' 0-5/16"				



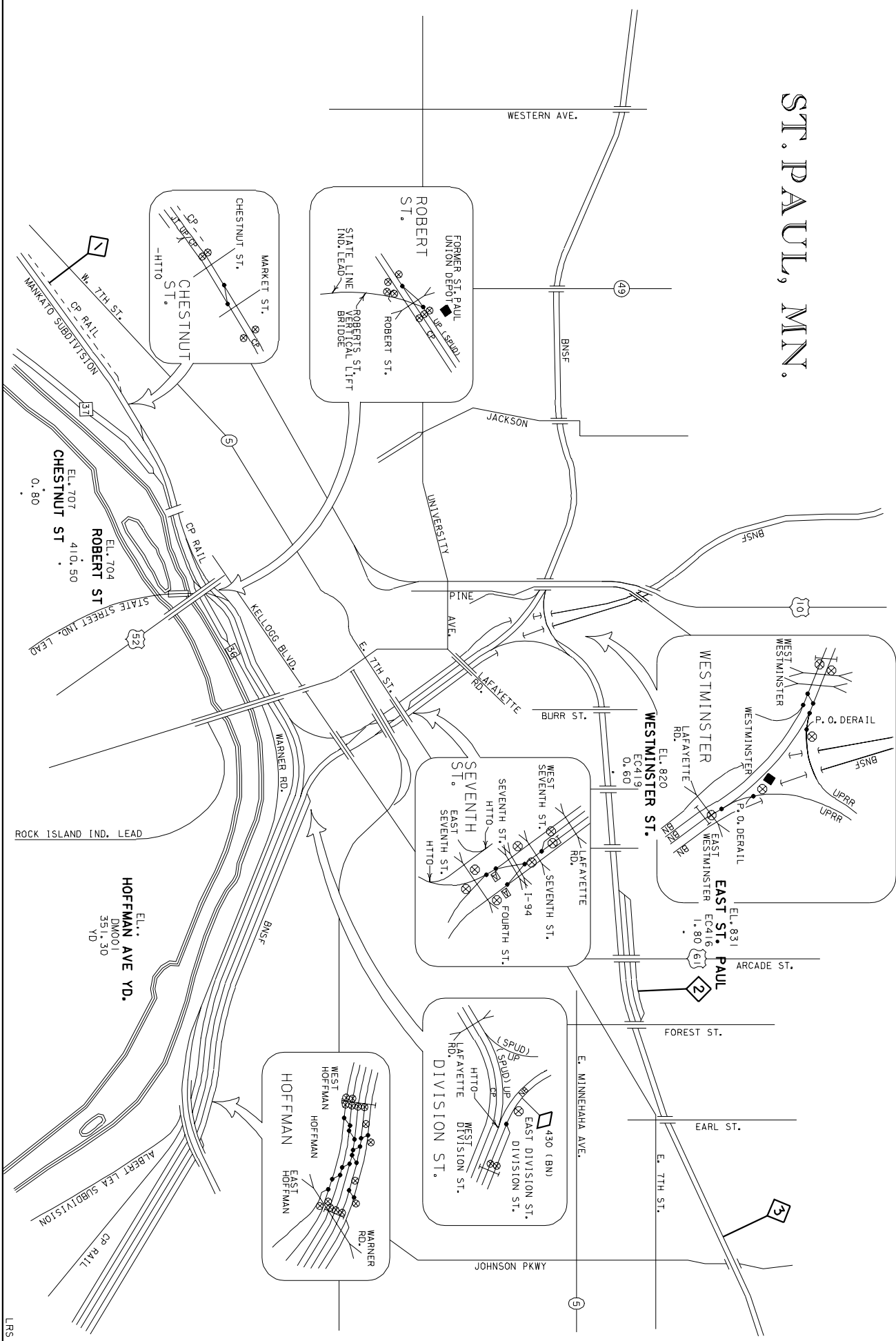
ST. PAUL, MN.
WESTERN AVE.



ST. PAUL
AUTO FACILITY

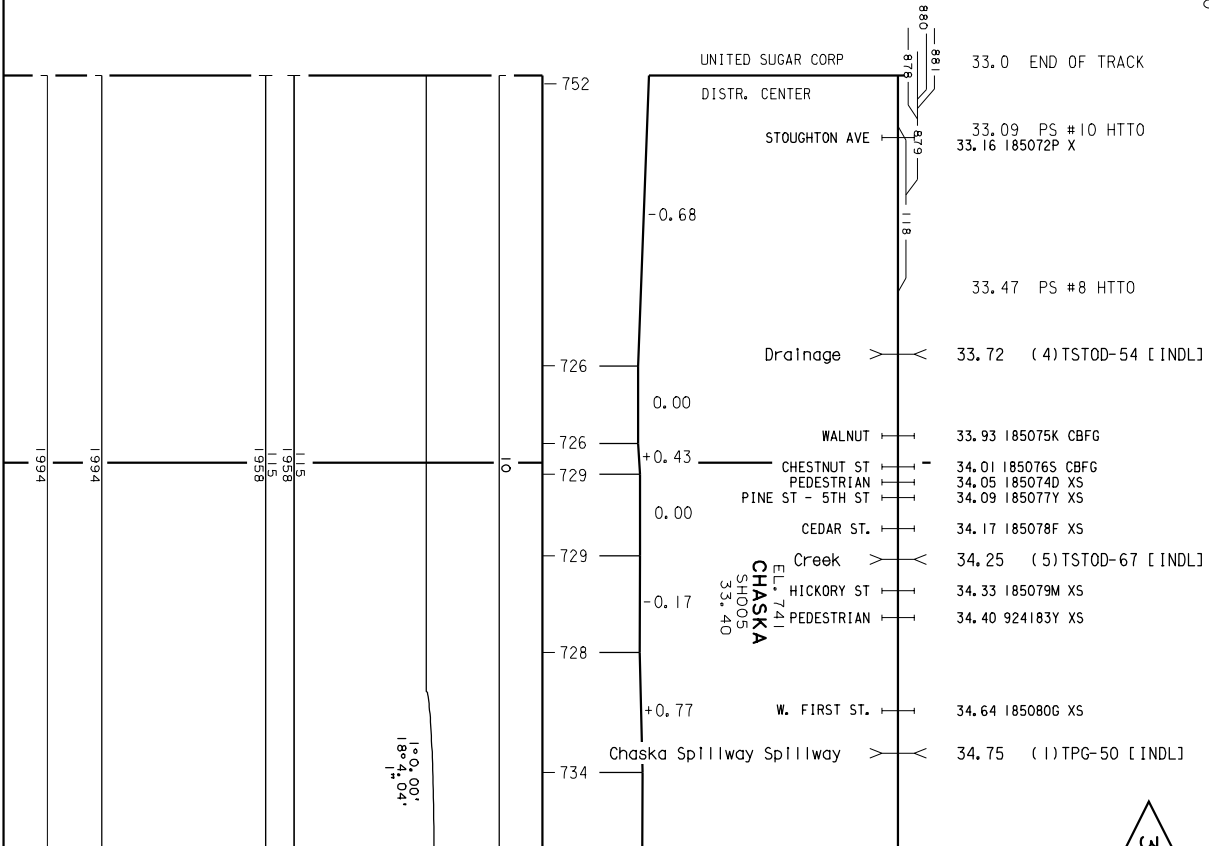
BHW

ST. PAUL, MN.



ABANDONED CHASKA TO HOPKINS (SUB #206)
 MP 32.0 TO MP 21.0 EFFECTIVE 1-9-1991
 ABANDONED CHASKA (SUB #244X) MP 33.0
 TO MP 32.0 EFFECTIVE 6-2-1993

CHASKA IND LD - MANKATO SUB
 38
 CONSTRUCTED BY MINNEAPOLIS AND ST. LOUIS RR-1870
 ACQUIRED BY CN&NW RY - NOV. 1, 1960
 CN&NW RY MERGED INTO UPRR BY ICC FINANCE
 DOCKET NO. 32133 - EFFECTIVE APRIL 6, 1995



SURF/ LINE	1994
TIES	1994
STIMN	115 1958 115
RATIL	115
CURVE	129.00' 18°4.04'
SPEED	10

CHASKA IND LD - MANKATO SUB

CONSTRUCTED BY MINNEAPOLIS AND ST. LOUIS RR-1870

ACQUIRED BY C&N W RY - NOV. 1, 1960

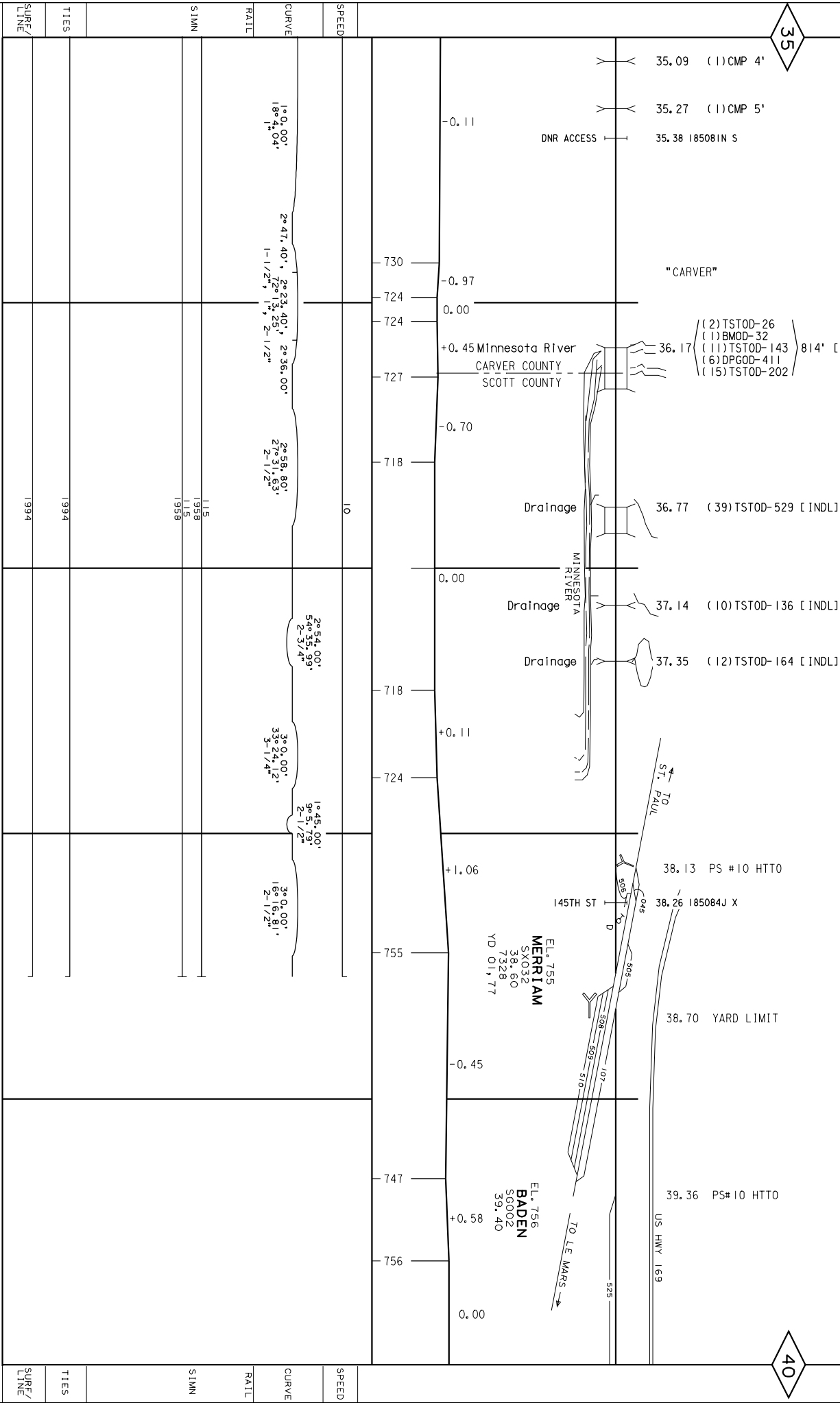
CONSTR BY MINNEAPOLIS AND ST. LOUIS RR-1878

39

C&N W RY MERGED INTO UPRR BY ICC FINANCE DOCKET NO. 32133 - EFFECTIVE APRIL 6, 1995

35

40



SURF/	TIES	SIMN	RATL	CURVE	SPEED
LINE	1994	1958 115 1958			10

SURF/	TIES	SIMN	RATL	CURVE	SPEED
LINE	1994				

DME MANKATO LEAD - MANKATO SUB

* CONSTRUCTED BY WISCONSIN, MINNESOTA AND PACIFIC RY-1884-1887
 * ACQUIRED FROM CHICAGO GREAT WESTERN RY-1968
 * DM & E HAS TRackage RIGHTS OVER UNION PACIFIC
 * PER AGREEMENT CNW 178248, DATED 9-3-1986

40

86

0 CNW

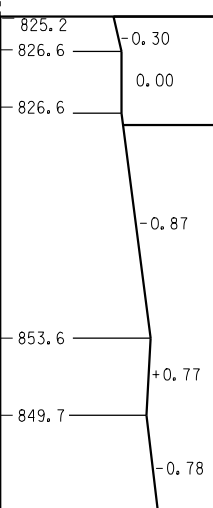
← TO RAPID CITY
 MANKATO

83

131.25 = 82.65 PS #15 TO

TO ST. PAUL

130



SURF/ LINE									
TIES									
INDL									
RAIL									
CURVE									
SPEED									
NO CURVES									
RAIL									
INDL									
TIES									
SURF/ LINE									

SH 119
 SH 119
 SH 119
 2001

DME MANKATO LEAD - MANKATO SUB

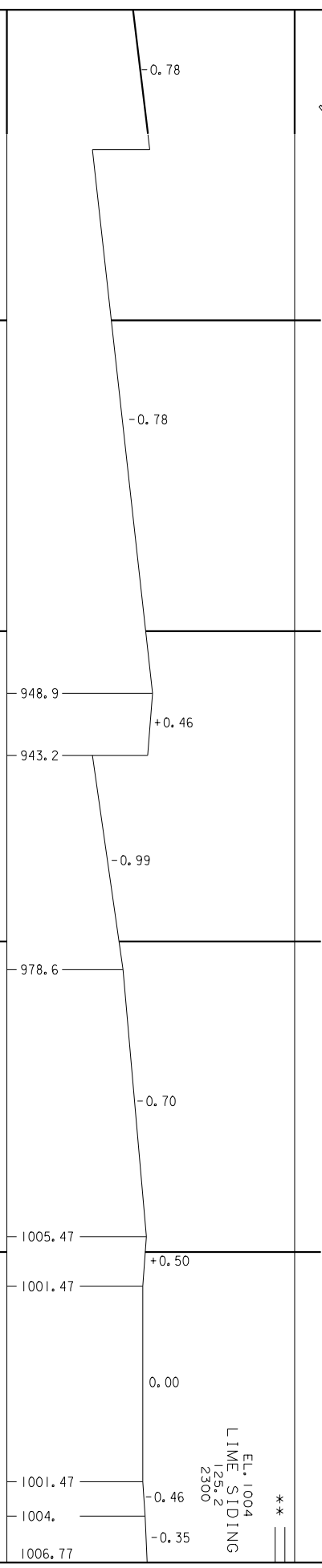
41

CONSTRUCTED BY WISCONSIN, MINNESOTA AND PACIFIC RY-1884-1887 ACQUIRED FROM CHICAGO GREAT WESTERN RY-1968
 SOLD TO DAKOTA, MINNESOTA AND EASTERN RAILROAD BY CHICAGO AND NORTHWESTERN RAILWAY PER AGREEMENT, EFFECTIVE SEPTEMBER 4, 1986
 *** DM&E HAS TRACKAGE RIGHTS OVER UNION PACIFIC PER AGREEMENT CNW 178248, DATED 9-3-1986
 ** CONSTRUCTED BY WINONA AND ST. PETER RAILROAD - 1871
 ** ORIGINAL ML TO BURDETTE ABANDONED 1974.
 ***** CONSTRUCTED BY CHICAGO AND NORTHWESTERN RAILWAY - 1974

130

125

129.60 END DM&E, BEG UP
 129.60 YARD LIMIT



**

EL. 1004
 LIME SIDING
 125.2
 2300

SPEED	10
CURVE	NO. CURVES
RAIL	
INDL	SH. 11.9 200 SH. 11.9 200
TIES	1992
SURF/LINE	1992

