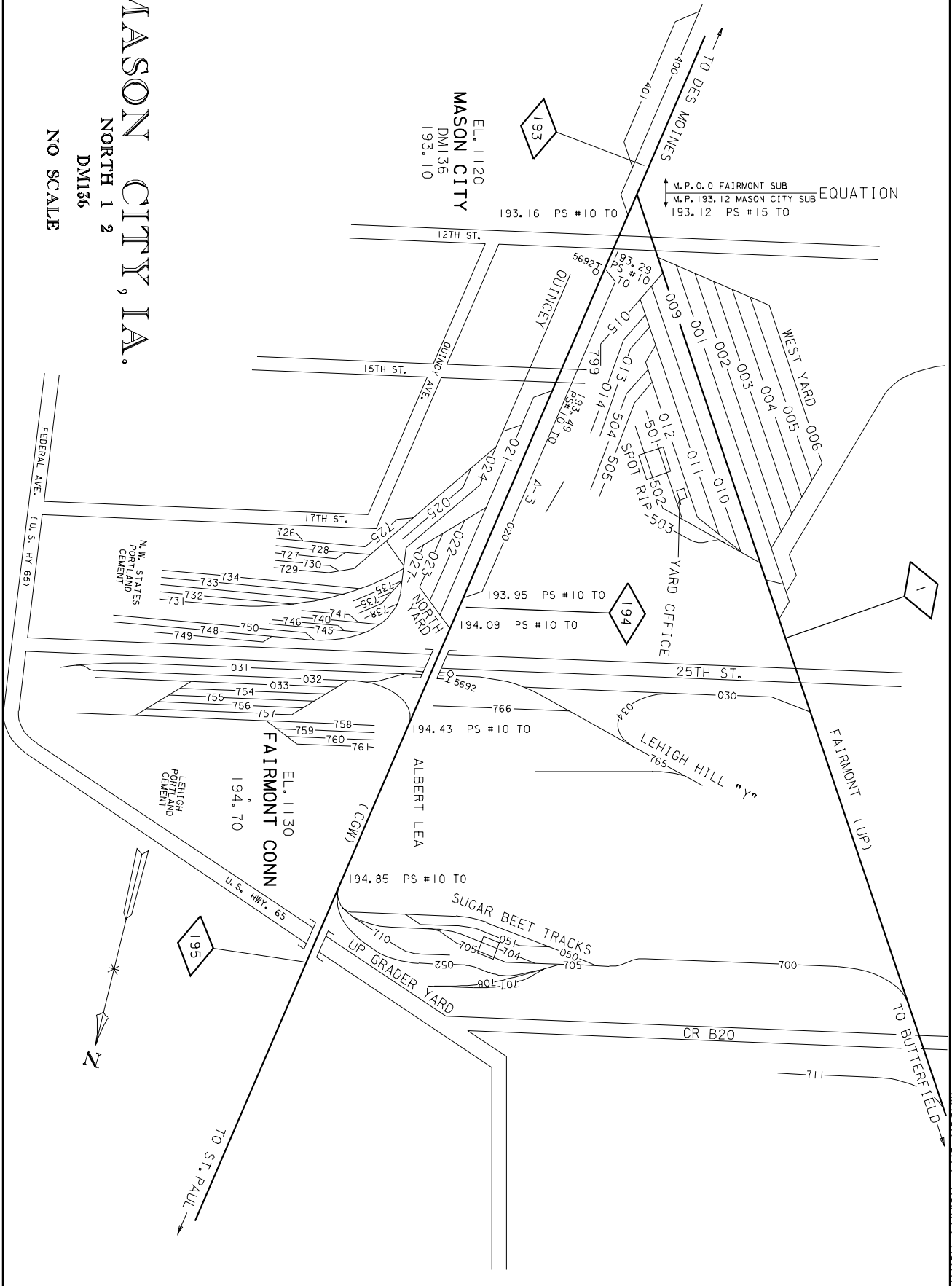


MASON CITY, IA.

NORTH 1 2
DM136
NO SCALE



LRB

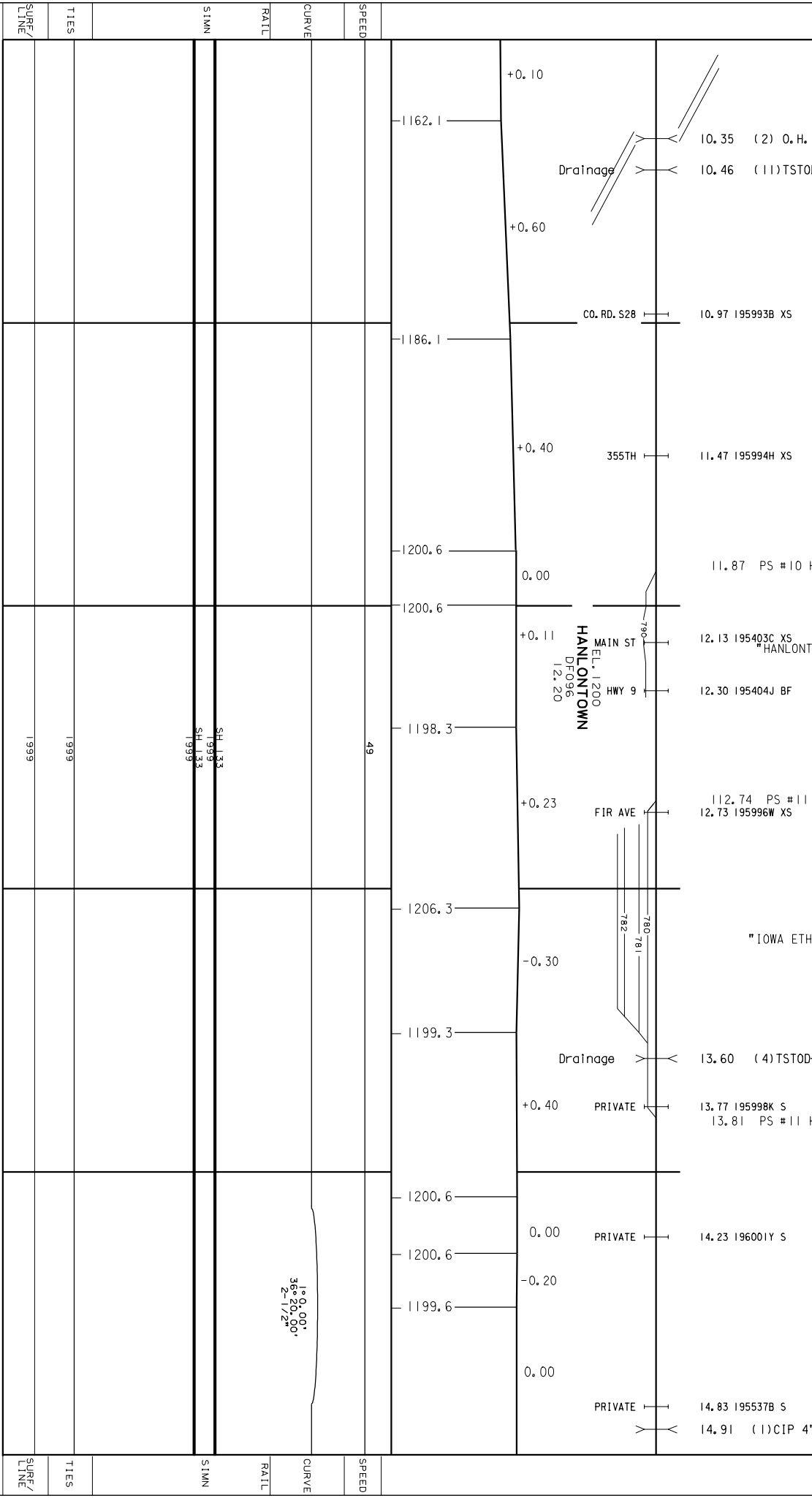
CONSTRUCTED BY IOWA, MINNESOTA AND NORTH WESTERN RY-1899
 CANW RY MERGED INTO UPRR BY ICC FINANCE DOCKET NO. 32133 -EFFECTIVE APRIL 6, 1995

FAIRMONT SUB

6

10

15



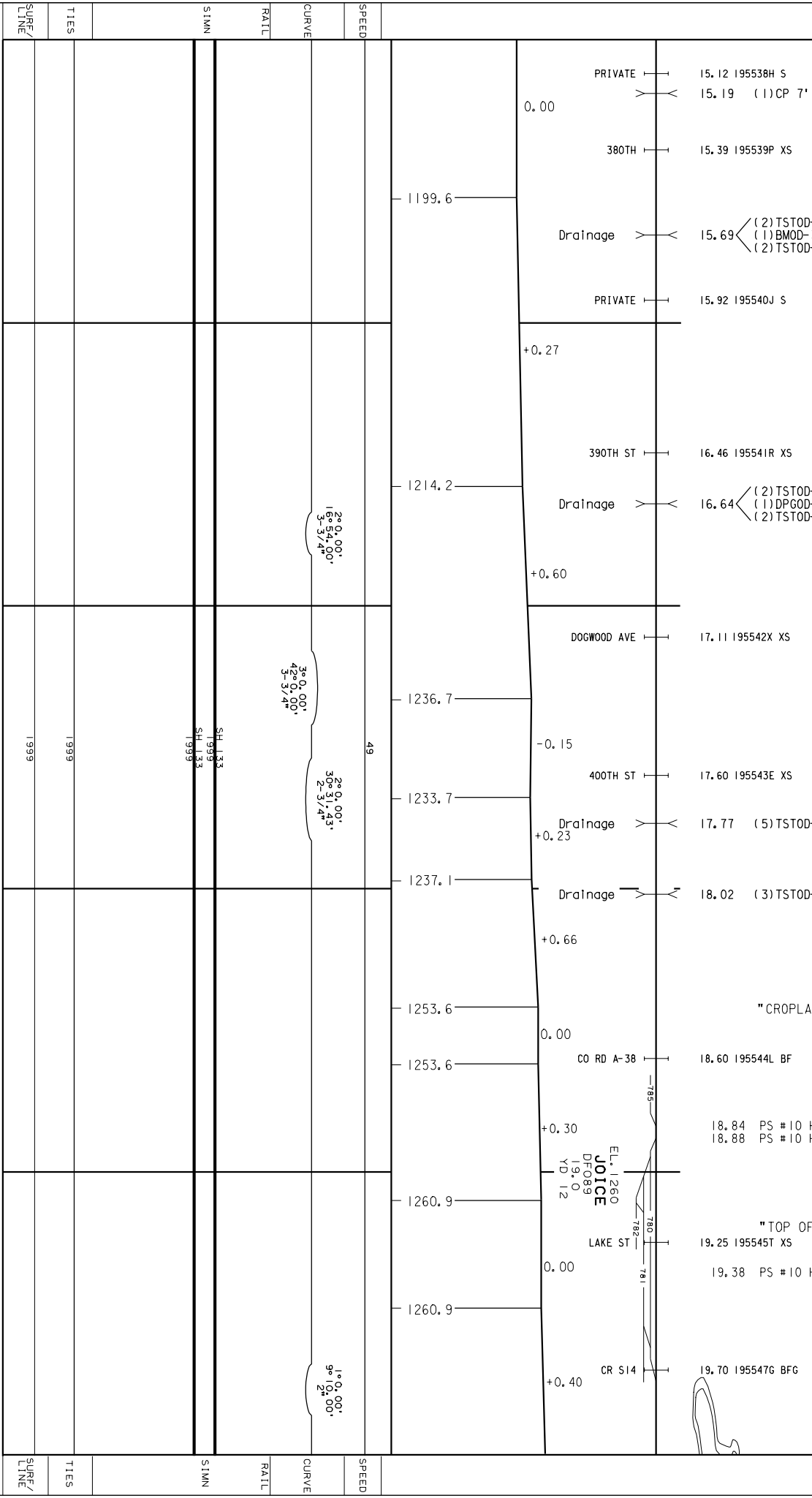
SURF/LINE	TIES	SIMN	RATL	CURVE	SPEED
1999	1999	SH 1133 SH 1133 SH 1133 1999			49

CONSTRUCTED BY IOWA, MINNESOTA AND NORTH WESTERN RY-1899
 CANW RY MERGED INTO UPRR BY ICC FINANCE DOCKET NO. 32133 - EFFECTIVE APRIL 6, 1995

FAIRMONT SUB

15

20



Last Updated: 03/20/2006
 P:\N2 twin cities\pages\fairmont sub\02\35-07.dgn

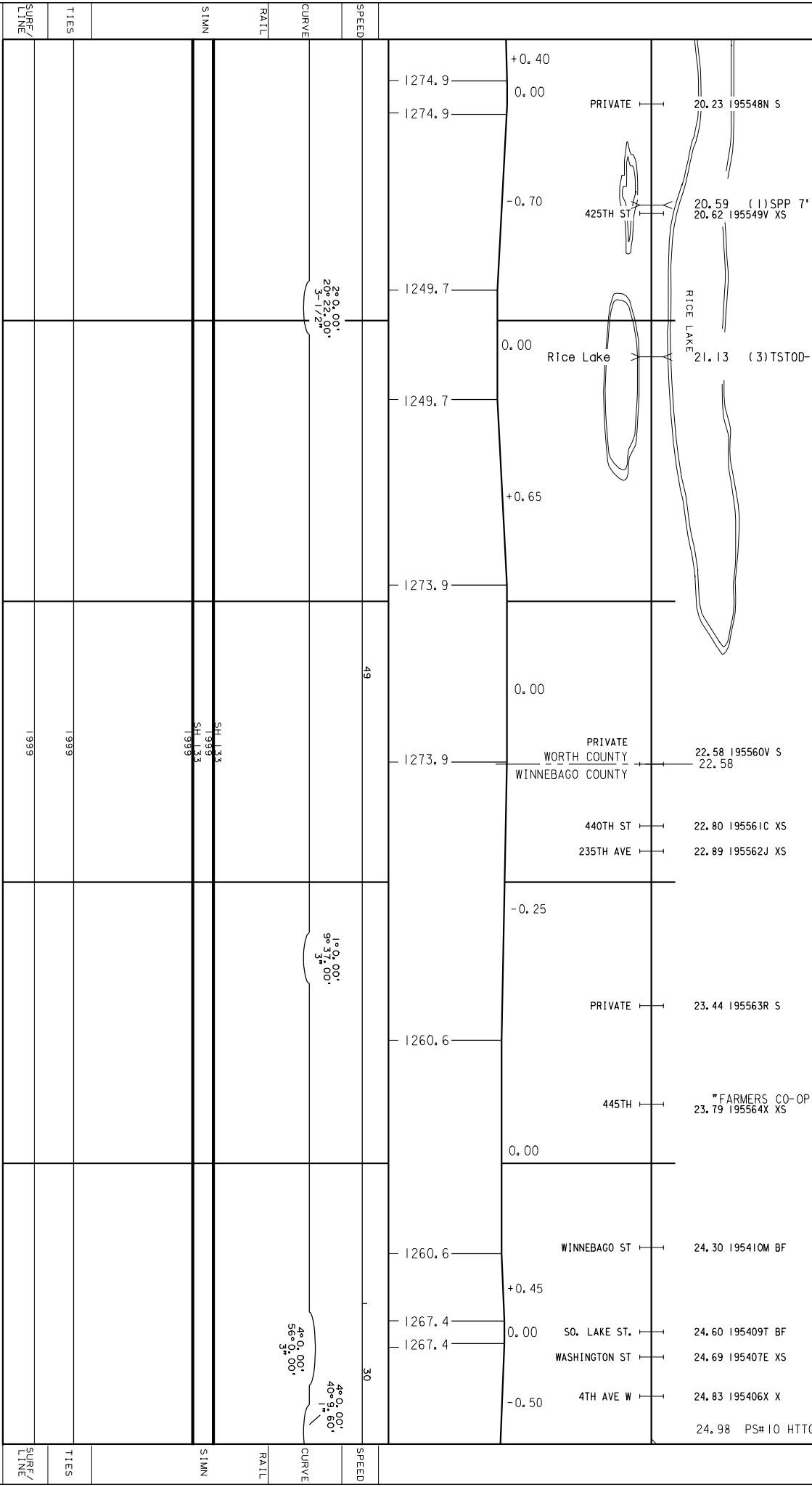
CONSTRUCTED BY IOWA, MINNESOTA AND NORTH WESTERN RY-1899
 Q&NW RY MERGED INTO UPRR BY ICC FINANCE DOCKET NO.32133 -EFFECTIVE APRIL 6, 1995

FAIRMONT SUB

8

20

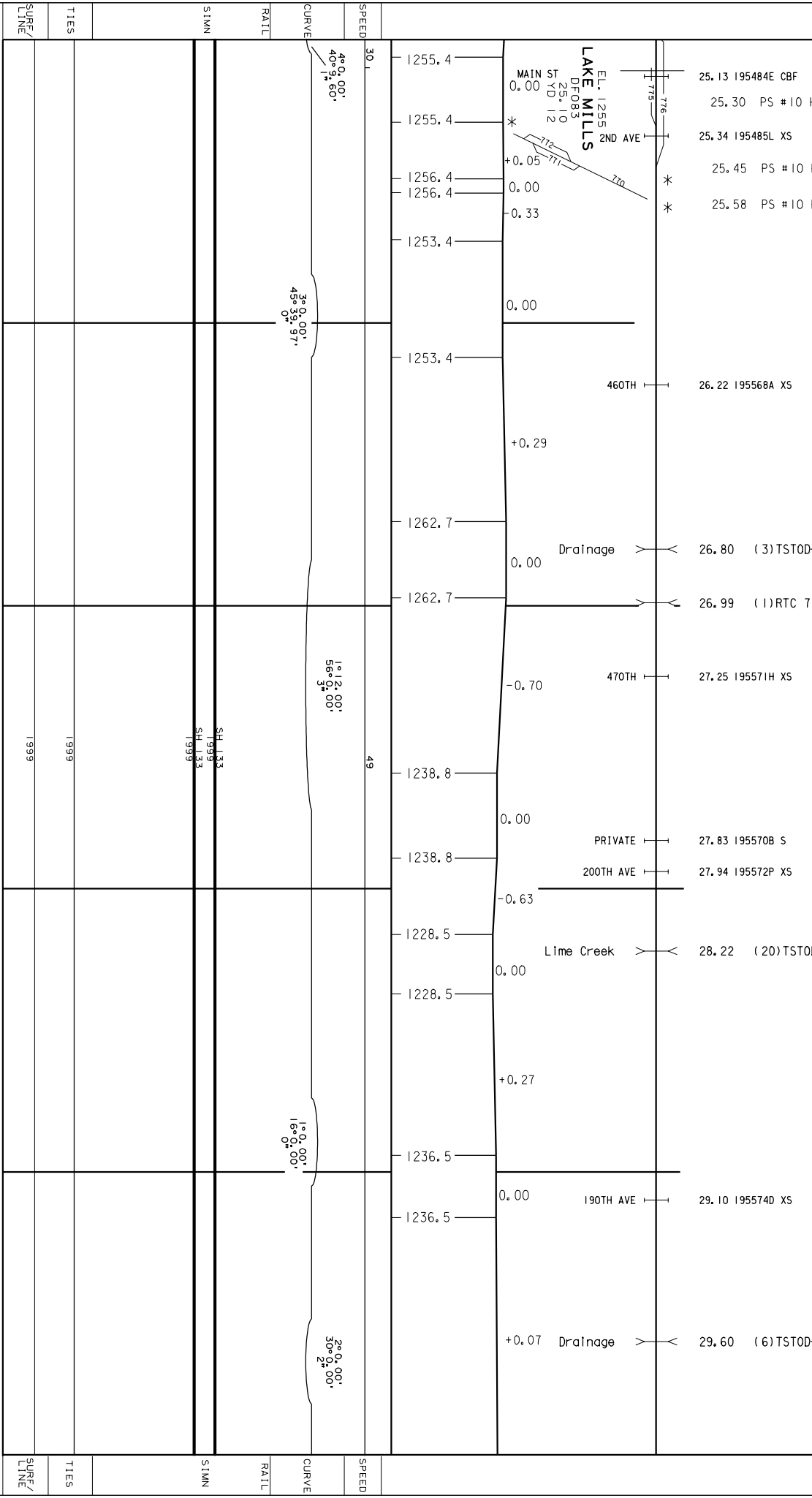
25



CONSTRUCTED BY IOWA, MINNESOTA AND NORTH WESTERN RY-1899
 CANW RY MERGED INTO UPRR BY ICC FINANCE DOCKET NO. 32133 - EFFECTIVE APRIL 6, 1995
 * ABANDONED LAKE MILLS TO ALBERT LEA, MN (SUB #12) 11-5-1976 AND
 * * ABANDONED LAKE MILLS TO LUVERNE, MN (SUB #95F) 4-2-1976

25

30



CONSTRUCTED BY IOWA, MINNESOTA AND NORTH WESTERN RY - 1899
 CANW RY MERGED INTO UP RR BY ICC FINANCE DOCKET NO. 32133 - EFFECTIVE APRIL 6, 1995

FAIRMONT SUB

35

40

STATION	CURVE	RATL	SPEED	ELEVATION	DESCRIPTION	STATION	CURVE	RATL	SPEED
1234.6	2° 0.00' 27° 32.00' 0"		49	-0.30	20TH ST	1238.6			
1227.6	3° 0.00' 18° 24.30' 2° 0.00' 11° 0.00' 1"			+0.24	35.68 (1) CBC 6' x 6'	1227.6			
1222.6	2° 0.00' 22° 17.00' 2° 3/4"			-0.39	590TH AVE	1228.6			
1228.6	1° 0.00' 10° 15.00' 3"			0.00	36.30 (1) SSP 4' 36.30 195966E X	1196.6			
1205.5	2° 0.00' 20° 0.00' 2° 1/2"			-0.25	PRIVATE	1196.6			
1196.6	2° 0.00' 22° 5.00' 2° 3/4"			+0.15	Cattle Pass	1196.6			
1196.6					S. FIRST ST	1196.6			
1196.6					PRIVATE	1196.6			
1196.6					WIGERN DR.	1196.6			
1196.6					37.17 195964R S	1196.6			
1196.6					37.31 (1) BMOD-24 [SIMN]	1196.6			
1196.6					37.49 195482R #BF HTTO	1196.6			
1196.6					37.67 195481E S	1196.6			
1196.6					37.83 PS #10 HTTO	1196.6			
1196.6					37.96 195963J X	1196.6			
1196.6					38.39 195962C BF	1196.6			
1196.6					38.42 AEI DETECTORS	1196.6			
1196.6					38.47 195961V X	1196.6			
1196.6					38.70 (3) TSG0D-39 [SIMN]	1196.6			
1196.6					38.95 (9) TST0D-117 [SIMN]	1196.6			
1196.6					560TH AVE	1196.6			
1196.6					39.64 195960N X	1196.6			

Last Updated: 01/20/2006

p:\N2 +win cities\pages\fairmont_sub\02\35.ll.dgn

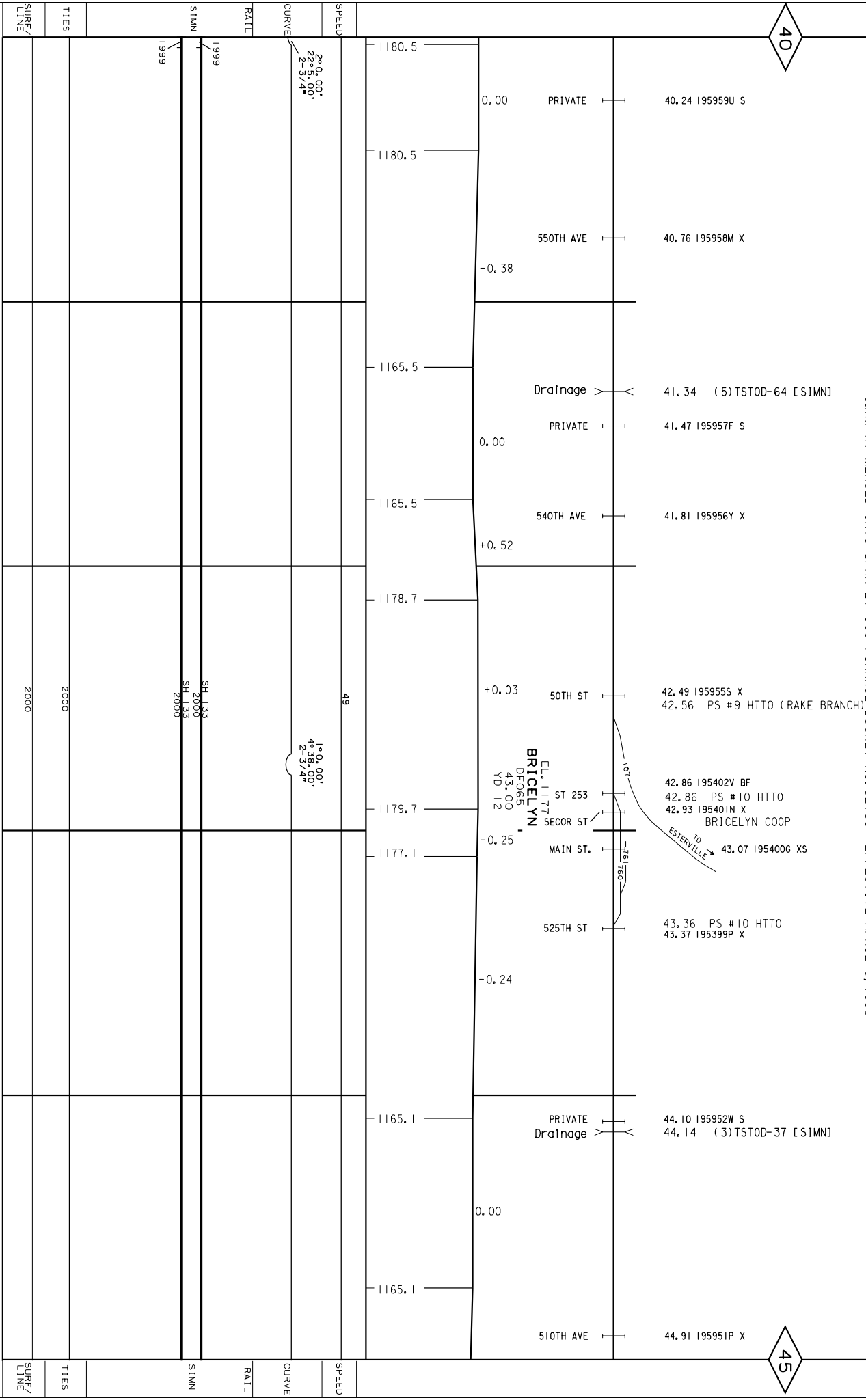
CONSTRUCTED BY IOWA, MINNESOTA AND NORTH WESTERN RY- 1899
 CANW RY MERGED INTO UPRR BY ICC FINANCE DOCKET NO. 32133 - EFFECTIVE APRIL 6, 1995

FAIRMONT SUB

12

40

45



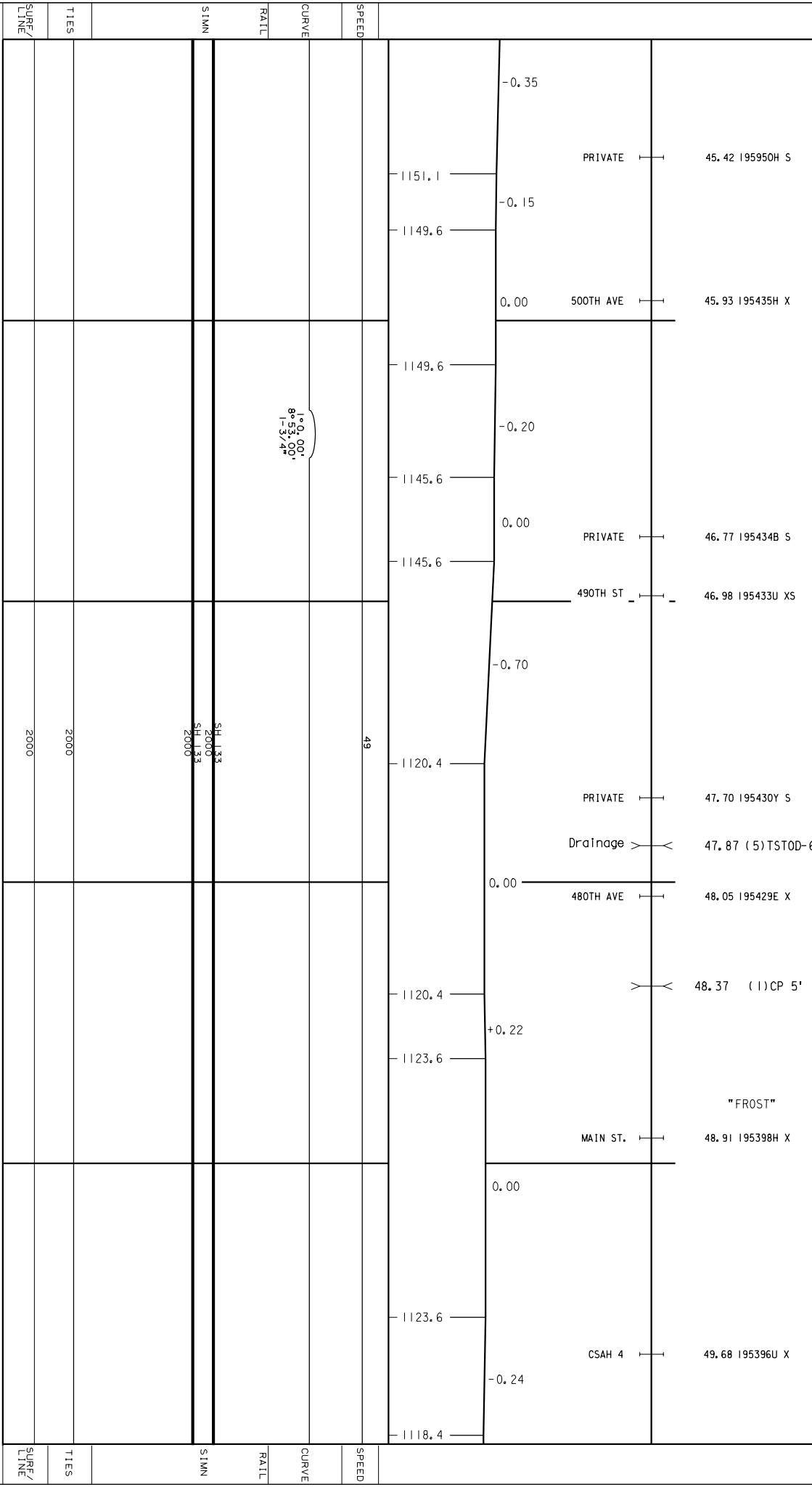
Last Updated: 01/20/2006

p:\12 twin cities\pages\fairmont sub\02\35_12.dgn

CONSTRUCTED BY IOWA, MINNESOTA AND NORTH WESTERN RY-1899
 MERGED INTO UPRR BY ICC FINANCE DOCKET NO. 32133 - EFFECTIVE APRIL 6, 1995

45

50



SURF/	2000
LINE	
TIES	2000
SURF/	2000
LINE	

13

LAST UPDATED 01/20/2006

pv12 twin cities\pages\fairmont sub\02\35.13.dgn

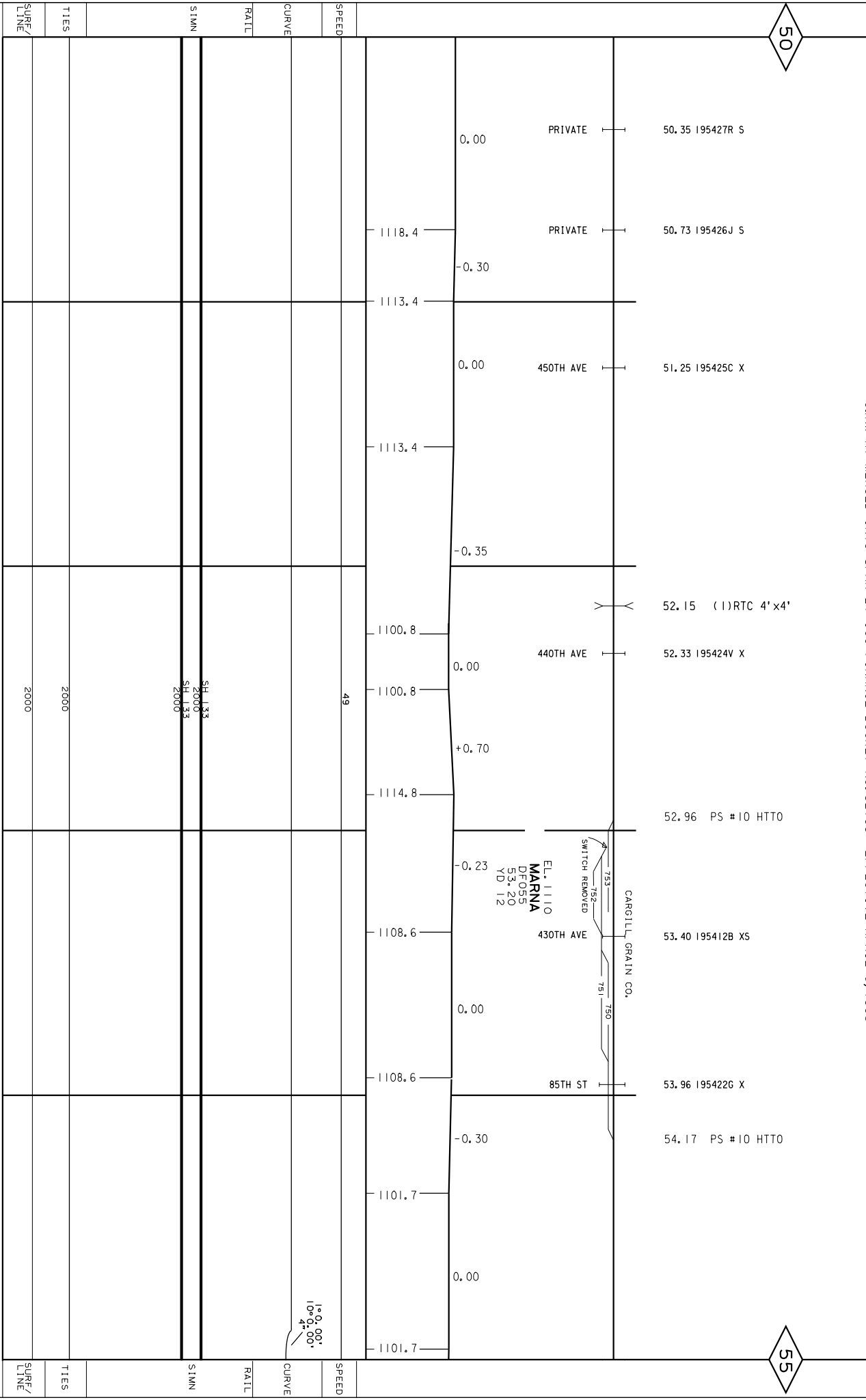
CONSTRUCTED BY IOWA, MINNESOTA AND NORTH WESTERN RY-1899
 C&NW RY MERGED INTO UPRR BY ICC FINANCE DOCKET NO. 32133 -EFFECTIVE APRIL 6, 1995

FAIRMONT SUB

14

50

55



CONSTRUCTED BY IOWA, MINNESOTA AND NORTH WESTERN RY-1899

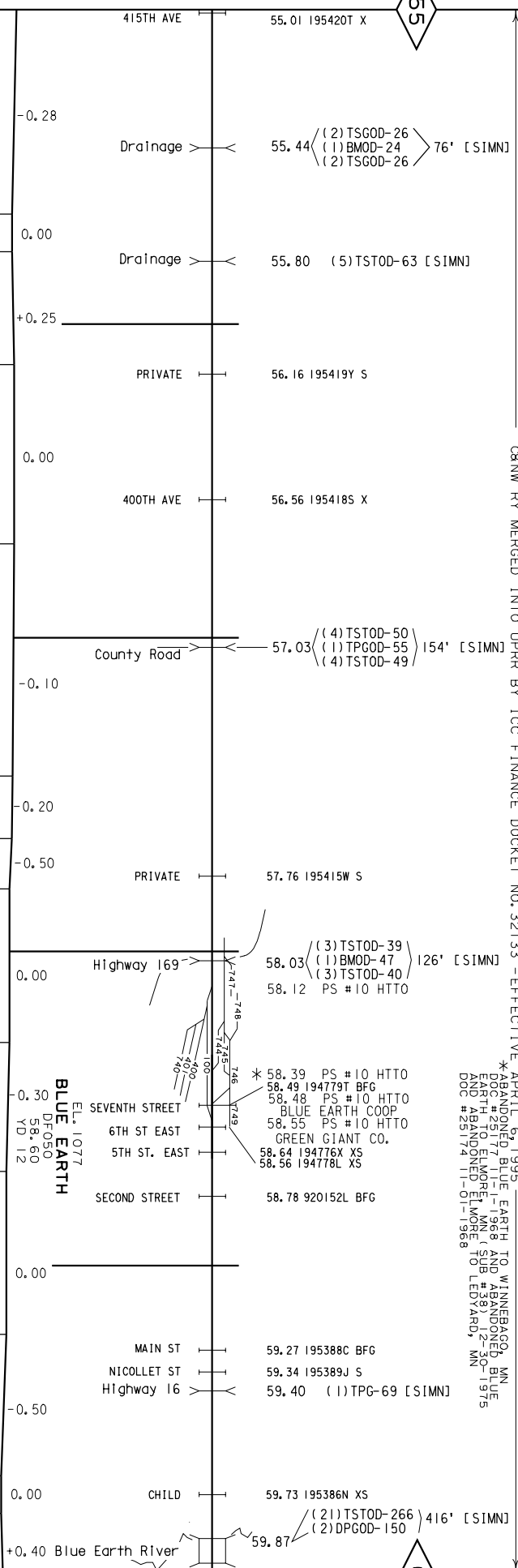
C8NW RY MERGED INTO UPRR BY ICC FINANCE DOCKET NO. 32133 - EFFECTIVE APRIL 6, 1995

* ABANDONED BLUE EARTH TO WINNEBAGO MN
* ABANDONED BLUE EARTH TO ELMORE MN
* ABANDONED ELMORE TO LEDVARD, MN
DOC # 251174 11-01-1968

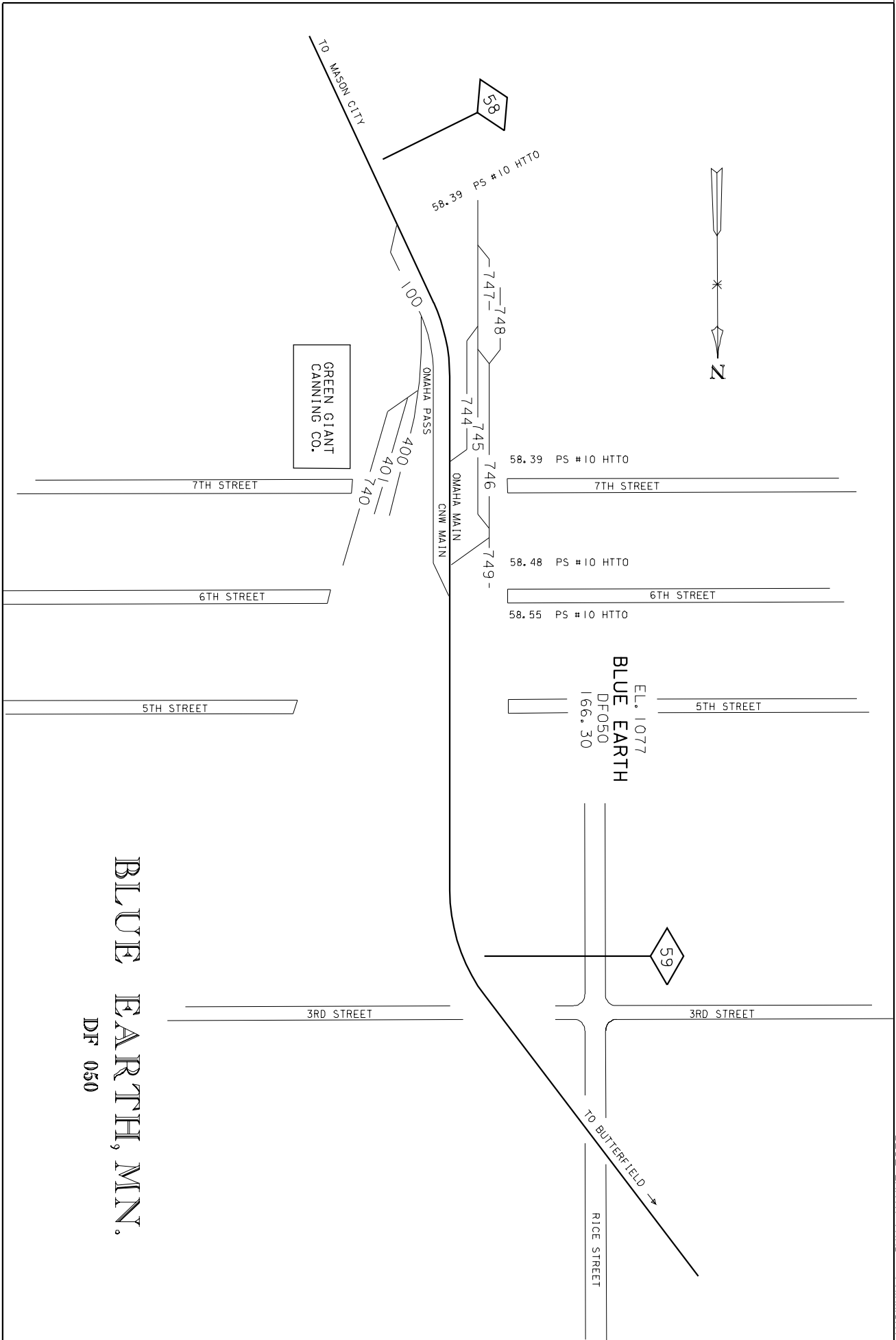
1900
15
FAIRMONT SUB

55

60



SURF/LINE	TIES	SIMN	RATL	CURVE	SPEED
				1°0.00' / 10°0.00' / 4"	49
				1°0.00' / 25°37.00' / 1-1/4"	49
	2000	SH 1.13 2000 SH 1.13 2000		3°0.00' / 0°0.00' / 15°10.00'	30
	2000			5°0.00' / 1°59.50' / 28°16.00'	30
				2°0.00' / 0°0.00' / 24°20.00'	30



BLUE EARTH, MN.
DF 050

CONSTRUCTED BY IOWA, MINNESOTA AND NORTH WESTERN RY-1900
 CANW RY MERGED INTO UPRR BY ICC FINANCE DOCKET NO. 32133 - EFFECTIVE APRIL 6, 1995

60 HTTO

65

STATION	RAIL	CURVE	SPEED	VERTICAL	TRACK	PS #	HTTO
1074.9		24° 01' 00" 24° 44' 00" 24° 00'	49		COMMERCE ST.	60.00	PS # 10 60.13 187143R XS
1074.9					WELK DR.	60.60	195480C XS
1085.9					PRIVATE	61.50	195479H S
1086.9							
1086.9							
1092.9					355TH AVE	62.10	195475F X
1092.9							
1107.9					345TH AVE	63.10	195472K X
1107.9							
1109.6							
1116.6		0° 30' 00" 10° 38' 00" 2° 37' 40"			335TH AVE	64.60	195477U X
1116.6							
1116.6							
						64.83	PS# 10 HTTO

CONSTRUCTED BY IOWA, MINNESOTA AND NORTH WESTERN RY-1900
 CANW RY MERGED INTO UPRR BY ICC FINANCE DOCKET NO. 32133 - EFFECTIVE APRIL 6, 1995

FAIRMONT SUB

65

70

STATION	RAIL	CURVE	SPEED	VERTICAL	DESCRIPTION	MARKING
1107.8				0.00	EL. 1107.8	735-734-733
1107.8				0.00	EL. 1107.8	
1102.8				-0.25	320TH AVE	
1102.8				0.00		
1107.7				+0.35	PRIVATE	
1106.6				+0.10	FARIBAULT CO. MARTIN CO. 310TH AVE	
1106.6				0.00		
1108.6				+0.10		
1109.9				+0.06	300TH AVE	
1109.9				+0.25		
1114.9				0.00		
1114.9				0.00	Drainage	
1125.7				+0.45	290TH AVE	
1125.7				0.00	PRIVATE	
1114.5				-0.35		
1114.5				0.00	280TH AVE	
1114.5				+0.10		

EL. 1107.8
 DFO 43
 65.50
 YD 12

0° 30.00'
 4° 1.00'
 2-1/4'

0° 30.00'
 6° 5.00'
 1'

SH 1.33
 2000
 SH 1.33
 2000

2000

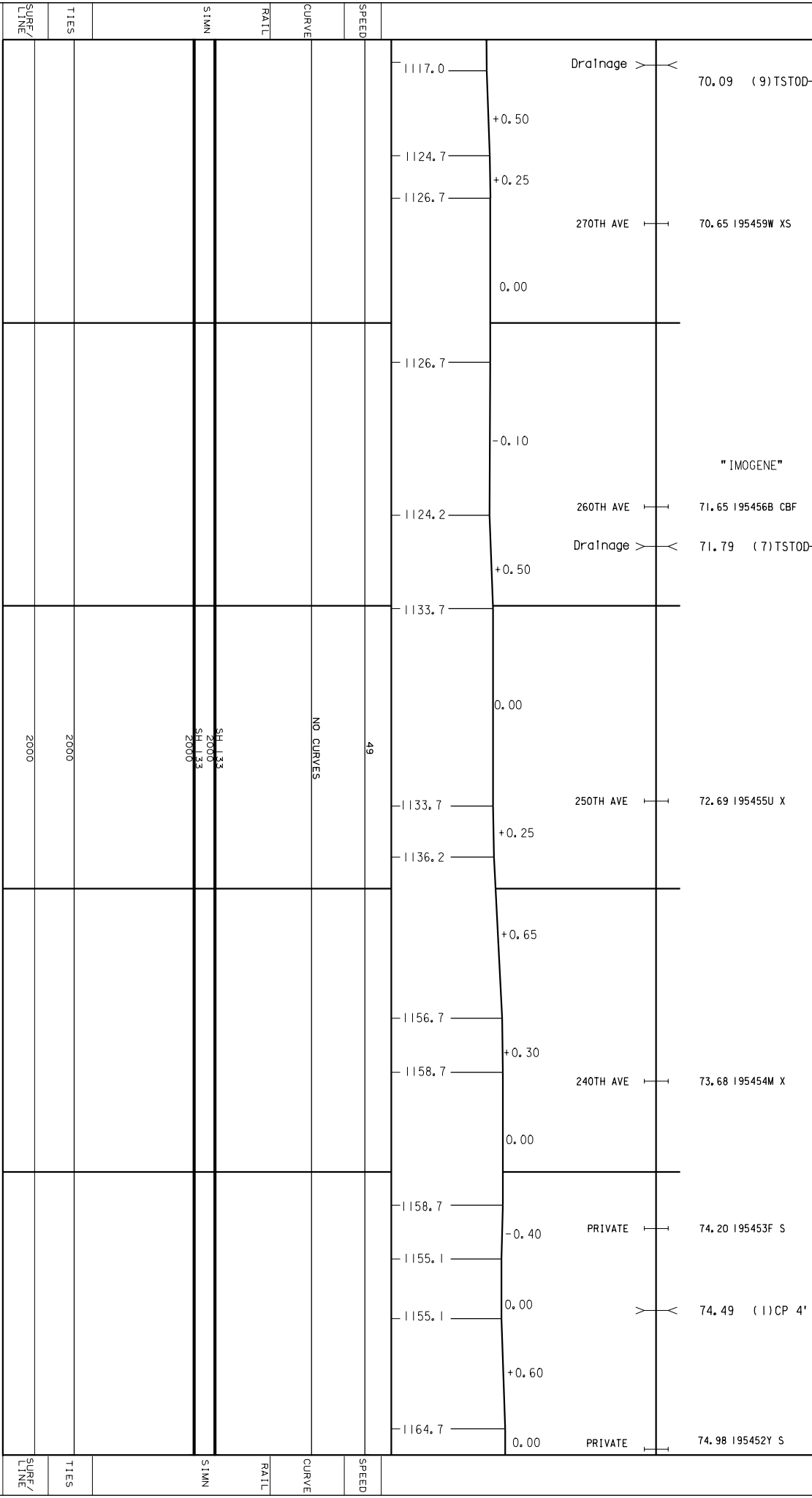
2000

CONSTRUCTED BY IOWA, MINNESOTA AND NORTH WESTERN RY--1900
 CANW RY MERGED INTO UPRR BY ICC FINANCE DOCKET NO. 32133 -EFFECTIVE APRIL 6, 1995

FAIRMONT SUB

70

75

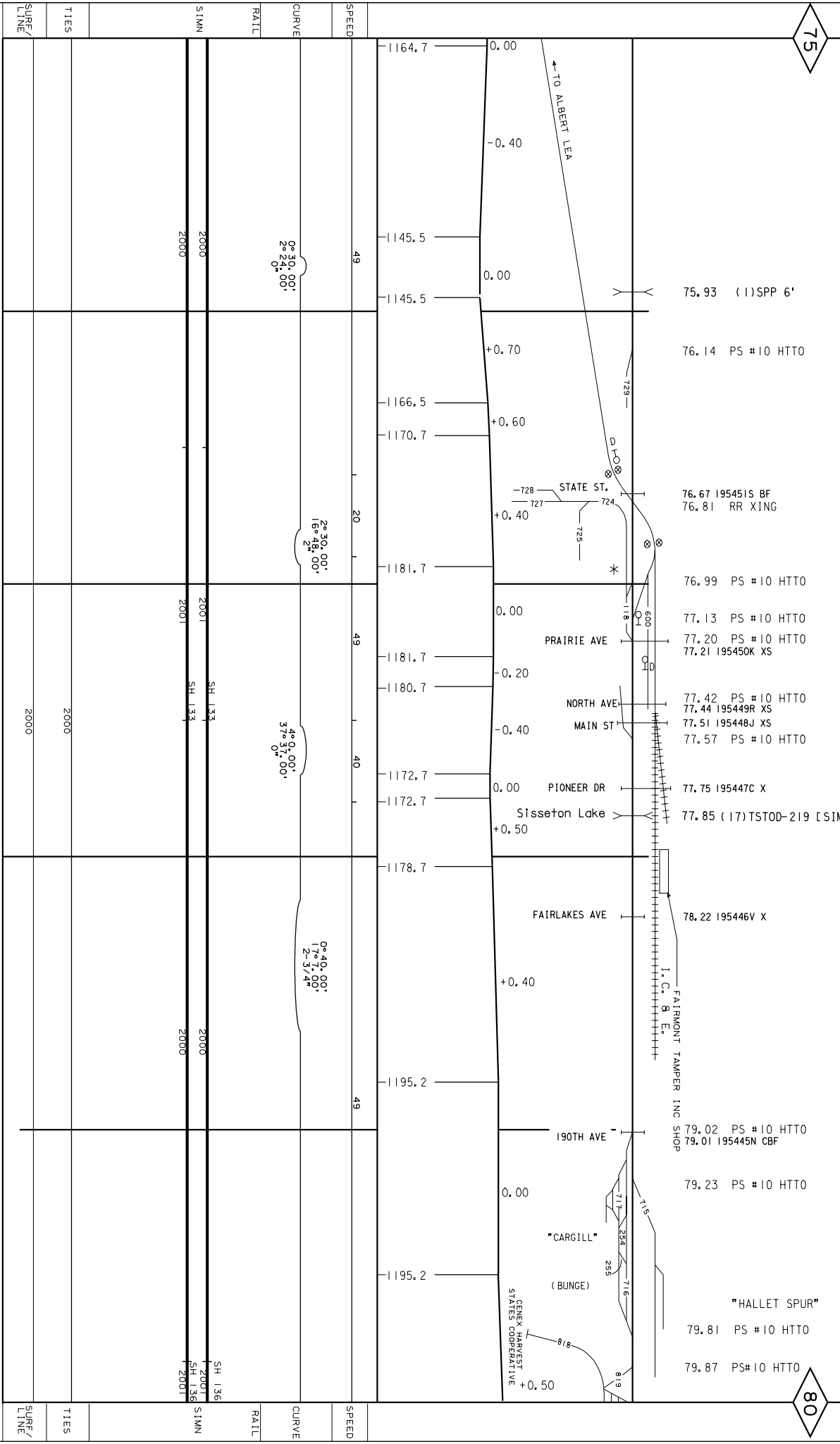


Last Updated: 02/20/2006
 p:\12 twin cities\pages\fairmont sub\02\135_19.dgn

CONSTRUCTED BY IOWA, MINNESOTA AND NORTH WESTERN RY--1900
 MERGED INTO UPRR BY ICC FINANCE DOCKET NO. 32133 -EFFECTIVE APRIL 6, 1995
 CP (SOO) HAS TRACKAGE RIGHTS OVER CNW PER AGREEMENT 4-1-1974
 * ABANDONED FAIRMONT TO TRUMAN, MN (SUB #37) 9-15-75 AND
 ABANDONED TRUMAN TO LEWISVILLE, MN DOC #25178 1-21-1969

75

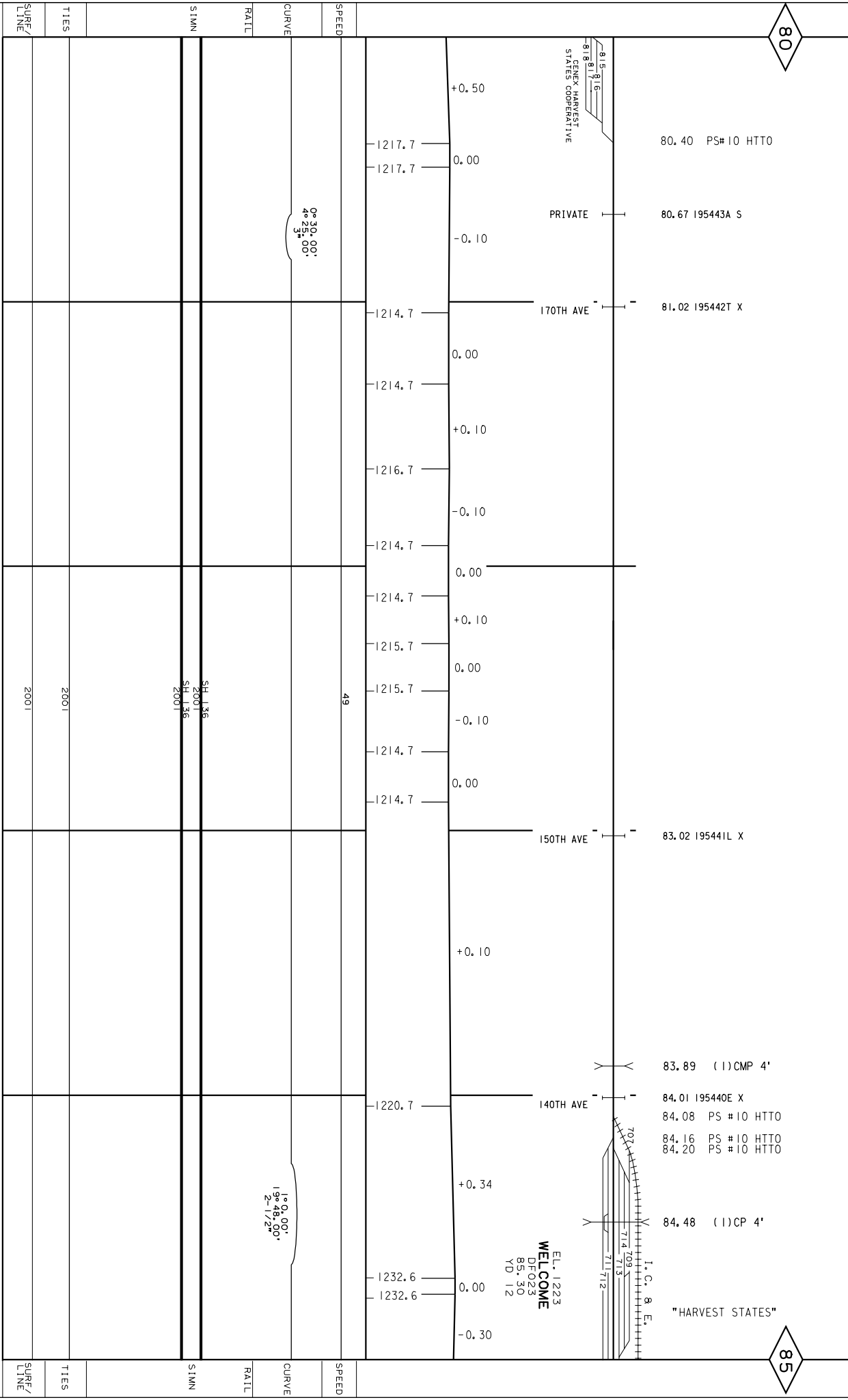
80



CONSTRUCTED BY IOWA, MINNESOTA AND NORTHWESTERN RAILWAY-1900
 CHANGED INTO UPRR BY ICC FINANCE DOCKET NO. 32133 -EFFECTIVE APRIL 6, 1995
 CP (500) HAS TRACKAGE RIGHTS OVER CNW PER AGREEMENT APRIL 4, 1974

80

85

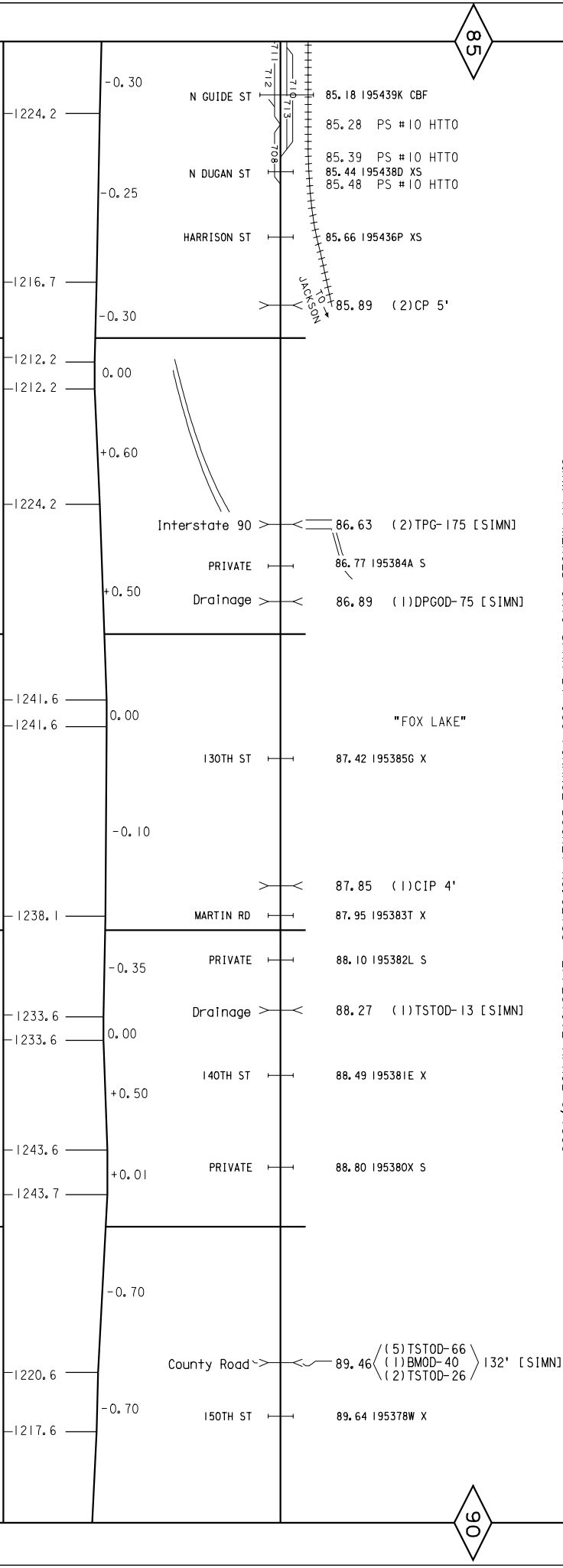


CONSTRUCTED BY IOWA, MINNESOTA AND NORTHWESTERN RAILWAY-1900
 CONSTRUCTED BY MINNESOTA AND IOWA RY-1899
 C&NW RY MERGED INTO UPRR BY ICC FINANCE DOCKET NO. 32133 -EFFECTIVE APRIL 6, 1995

FAIRMONT SUB

85

90



STATION	ELEVATION	DESCRIPTION
1224.2	-0.30	N GUIDE ST
1224.2	-0.28	PS #10 HOTO
1224.2	-0.25	N DUGAN ST
1224.2	-0.25	PS #10 HOTO
1224.2	-0.25	PS #10 HOTO
1224.2	-0.25	PS #10 HOTO
1216.7	-0.30	HARRISON ST
1216.7	-0.30	PS #10 HOTO
1212.2	0.00	Interstate 90
1212.2	0.00	PRIVATE
1224.2	+0.60	Interstate 90
1224.2	+0.60	PRIVATE
1224.2	+0.50	Drainage
1241.6	0.00	"FOX LAKE"
1241.6	0.00	130TH ST
1241.6	0.00	PS #10 HOTO
1238.1	-0.10	MARTIN RD
1238.1	-0.10	PS #10 HOTO
1238.1	-0.10	PRIVATE
1233.6	-0.35	Drainage
1233.6	0.00	140TH ST
1233.6	0.00	PS #10 HOTO
1243.6	+0.50	PRIVATE
1243.7	+0.01	PRIVATE
1220.6	-0.70	County Road
1220.6	-0.70	PS #10 HOTO
1217.6	-0.70	150TH ST
1217.6	-0.70	PS #10 HOTO

RAIL LINE
 CURVE
 SPEED
 SIMN
 TIES
 SURF/LINE

22

Last Updated: 01/20/2006

P:\N2 twin cities\pages\fairmont sub\02\135-22.dgn

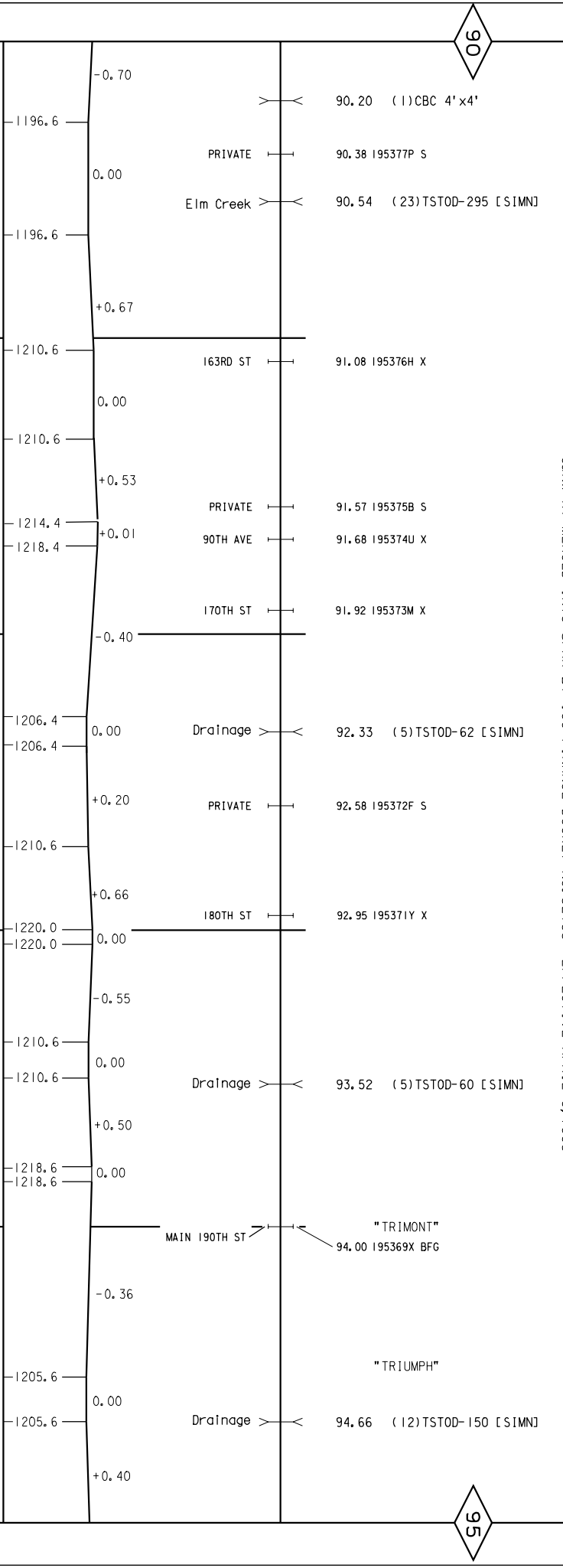
90

95

CONSTRUCTED BY MINNESOTA AND IOWA RAILWAY - 1899
CANW RY MERGED INTO UPRR BY ICC FINANCE DOCKET NO. 32133 - EFFECTIVE APRIL 6, 1995

FAIRMONT SUB

23



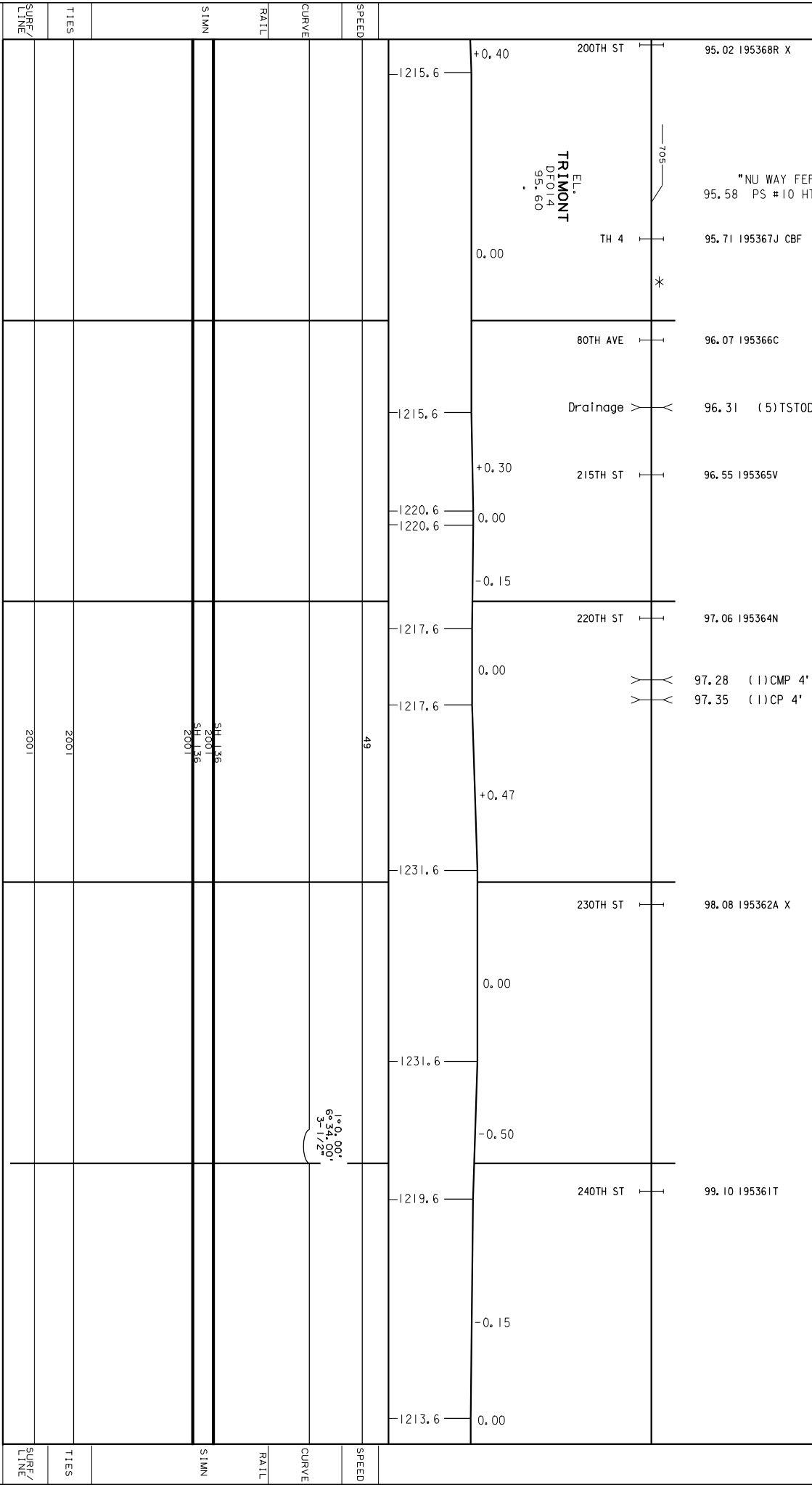
SURF/LINE	TIES	SIMN	RATL	CURVE	SPEED
2001	2001	SH 136 SH 136 2001		1° 0.00' 1° 50.00' 1-1/4"	49

CONSTRUCTED BY MINNESOTA AND IOWA RAILWAY - 1899
 CANW RY MERGED INTO UPRR BY ICC FINANCE DOCKET NO. 32133 - EFFECTIVE APRIL 6, 1995

* ABANDONED ESTHERVILLE, IA TO ORMSBY, MN (SUB #78F) EFFECTIVE JUNE 1, 1979

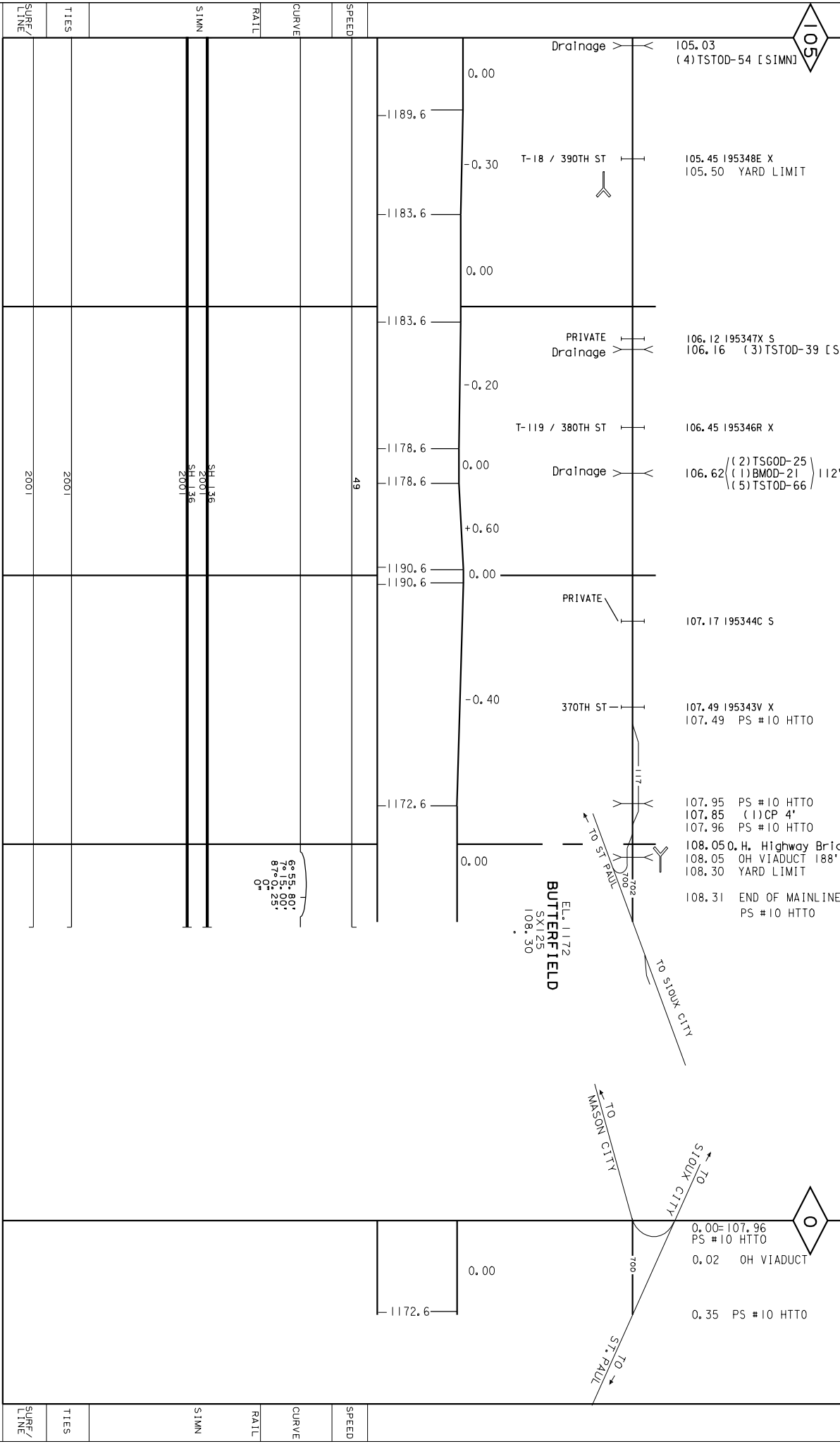
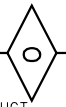
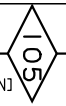
95

100



LINE	SURF	TIES	SIMN	RATL	CURVE	SPEED
2001		2001	SH 1.36 SH 1.36 2001			49
2001		2001			1°0.00' 6°34.00' 3-1/2"	
2001		2001				

CONSTRUCTED BY MINNESOTA AND IOWA RY 1899
 CANW RY MERGED INTO UPRR BY ICC FINANCE DOCKET #32133 EFFECTIVE APRIL 6, 1995
 LINE ABANDONED FROM BUTTERFIELD TO COMFREY, MN
 MP 215.8 TO MP 227.0 (SUB #198X) OCTOBER 10, 1989



SURF/ LINE	TIES	SIMN	RAIL	CURVE	SPEED
---------------	------	------	------	-------	-------

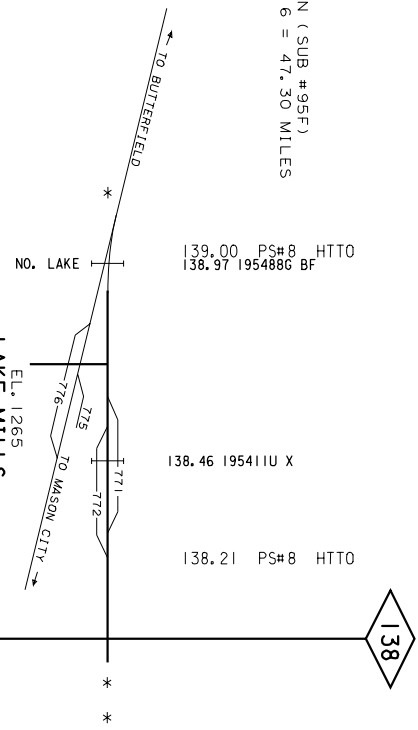
SURF/ LINE	TIES	SIMN	RAIL	CURVE	SPEED
---------------	------	------	------	-------	-------

65° 55' 80"
 7° 15' 00"
 87° 0' 25"
 0'

EL. 1172
 BUTTERFIELD
 SX 25
 108.50

CONSTRUCTED BY MINNESOTA & SOUTHERN IOWA RY--1879
 (FORMER MINNEAPOLIS AND ST. LOUIS RR)
 ACQUIRED BY C&NW RY 11-1-1960
 CONSTRUCTED BY C&NW RW-1965-1CC# 141

* ABANDONED LAKE MILLS TO LUVERNE, MN (SUB #95F)
 APRIL 2, 1981 MP 159.3 TO MP 186.6 = 47.30 MILES
 * ABANDONED LAKE MILLS TO ALBERT LEA, MN
 (SUB # 12) NOVEMBER 5, 9/8 MP 138.90
 TO MP 120.51 = 18.39 MILES



SURF/ LINE	TIES	INDL	RAIL	CURVE	SPEED
	1957			NO CURVES	
	1957	95 1943 85 1943	10		
	1957				

ICC TRACK # 80 - 681' CONSTR. BY CANW RAILWAY - 1966
 CONSTRUCTED BY MINNEAPOLIS & ST. LOUIS RR - 1899-1900
 ACQUIRED BY CANW RY 11-1-1960
 *** ABANDONED ESTHERVILLE, IA TO ORMSBY, MN ABANDONMENT FILED WITH STB, DOC AB33 (SUB 186X) DECEMBER 18, 2001 ***
 (SUB # 78F) JUNE 1, 1979 MP 136.0 TO MP 140.7 AND MP 142.4 TO MP 168.9

